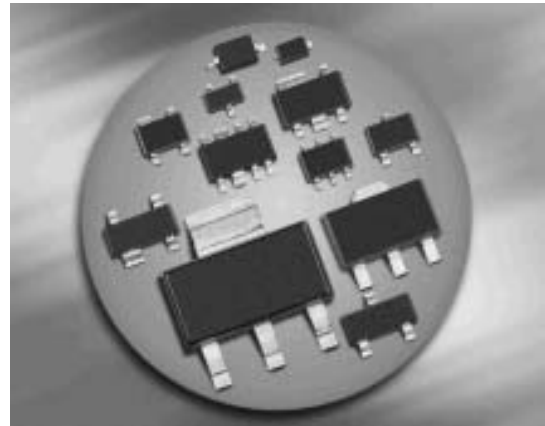
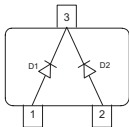


Silicon Variable Capacitance Diodes

- For FM radio tuners with extended frequency band
- High tuning ratio at low supply voltage (car radio)
- Monolithic chip (common cathode) for perfect dual diode tracking
- Coded capacitance groups and group matching available
- Pb-free (RoHS compliant) package ¹⁾
- Qualified according AEC Q101


BB814


Type	Package	Configuration	L_S (nH)	Marking
BB814	SOT23	common cathode	1.8	SH1/2*

*For differences see next page Capacitance groups

Maximum Ratings at $T_A = 25^\circ\text{C}$, unless otherwise specified

Parameter	Symbol	Value	Unit
Diode reverse voltage	V_R	18	V
Peak reverse voltage-	V_{RM}	20	
Forward current	I_F	50	mA
Operating temperature range	T_{op}	-55 ... 125	°C
Storage temperature	T_{stg}	-55 ... 150	

¹⁾Pb-containing package may be available upon special request

Electrical Characteristics at $T_A = 25^\circ\text{C}$, unless otherwise specified

Parameter	Symbol	Values			Unit
		min.	typ.	max.	
DC Characteristics					
Reverse current $V_R = 16\text{ V}$ $V_R = 16\text{ V}, T_A = 60^\circ\text{C}$	I_R	-	-	20 200	nA
AC Characteristics					
Diode capacitance ¹⁾ $V_R = 2\text{ V}, f = 1\text{ MHz}$ $V_R = 8\text{ V}, f = 1\text{ MHz}$	C_T	43 19.1	44.75 20.8	46.5 22.7	pF
Capacitance ratio $V_R = 2\text{ V}, V_R = 8\text{ V}, f = 1\text{ MHz}$	C_{T2}/C_{T8}	2.05	2.15	2.25	
Capacitance matching ²⁾ $V_R = 2\text{ V}, V_R = 8\text{ V}, f = 1\text{ MHz}$	$\Delta C_T/C_T$	-	-	3	%
Series resistance $V_R = 2\text{ V}, f = 100\text{ MHz}$	r_S	-	0.18	-	Ω
Q factor $f = 100\text{ MHz}, V_R = 2\text{ V}$	Q	-	200	-	

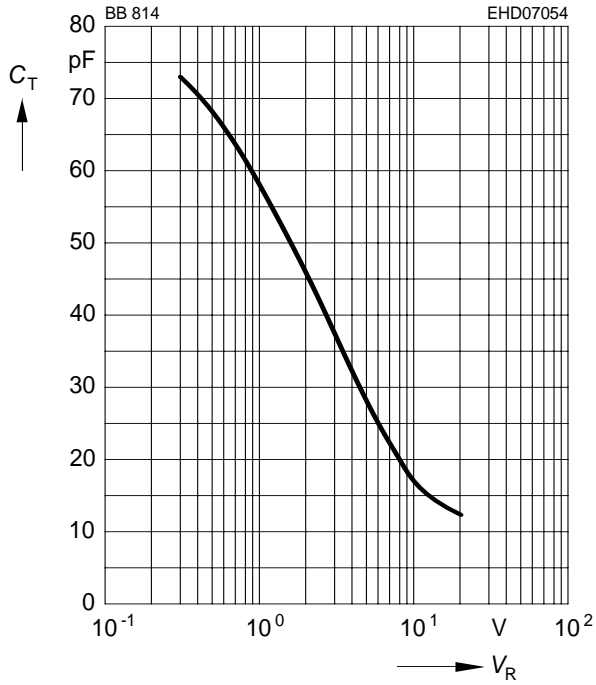
¹Capacitance groups at 2V and 8V, coded 1; 2

C_T /groups	1	2
C_{2V} min	43pF	44.5pF
C_{2V} max	45pF	46.5pF
C_{8V} min	19.1pF	19.75pF
C_{8V} max	21.95pF	22.7pF

²For details please refer to Application Note 047.

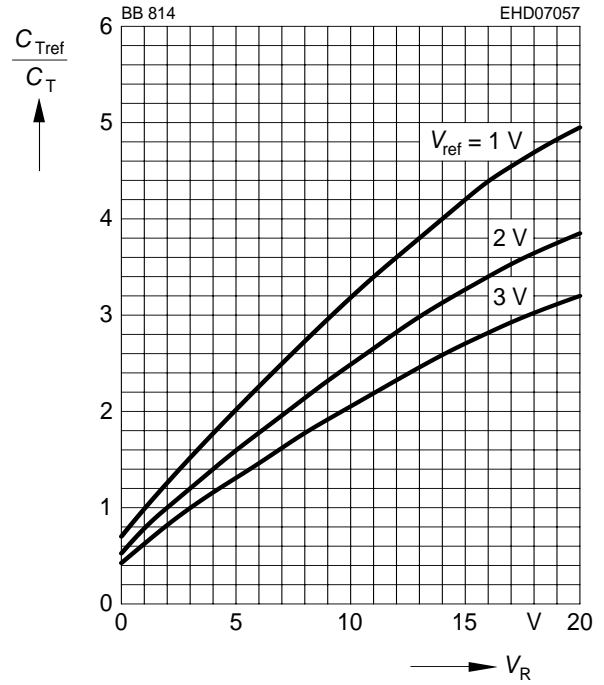
Diode capacitance $C_T = f(V_R)$

$f = 1\text{MHz}$

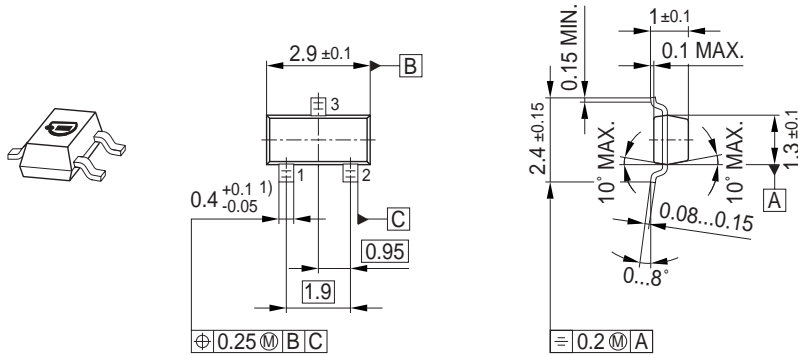


Capacitance ratio $C_{Tref}/C_T = f(V_R)$

$f = 1\text{MHz}$

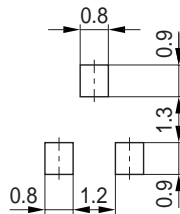


Package Outline

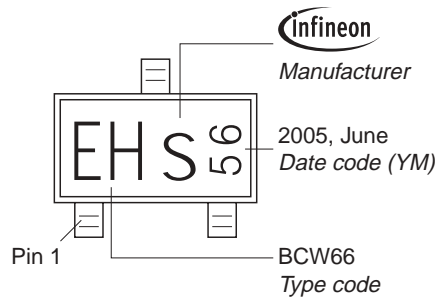


1) Lead width can be 0.6 max. in dambar area

Foot Print

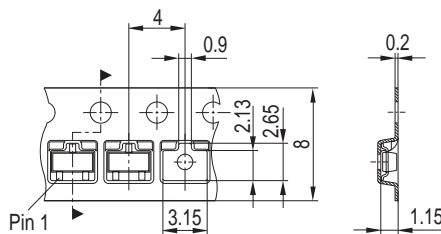


Marking Layout (Example)



Standard Packing

Reel ø180 mm = 3.000 Pieces/Reel
 Reel ø330 mm = 10.000 Pieces/Reel



Edition 2006-02-01
Published by
Infineon Technologies AG
81726 München, Germany
© Infineon Technologies AG 2007.
All Rights Reserved.

Attention please!

The information given in this document shall in no event be regarded as a guarantee of conditions or characteristics ("Beschaffenhheitsgarantie"). With respect to any examples or hints given herein, any typical values stated herein and/or any information regarding the application of the device, Infineon Technologies hereby disclaims any and all warranties and liabilities of any kind, including without limitation warranties of non-infringement of intellectual property rights of any third party.

Information

For further information on technology, delivery terms and conditions and prices please contact your nearest Infineon Technologies Office (www.infineon.com).

Warnings

Due to technical requirements components may contain dangerous substances. For information on the types in question please contact your nearest Infineon Technologies Office.

Infineon Technologies Components may only be used in life-support devices or systems with the express written approval of Infineon Technologies, if a failure of such components can reasonably be expected to cause the failure of that life-support device or system, or to affect the safety or effectiveness of that device or system.

Life support devices or systems are intended to be implanted in the human body, or to support and/or maintain and sustain and/or protect human life. If they fail, it is reasonable to assume that the health of the user or other persons may be endangered.