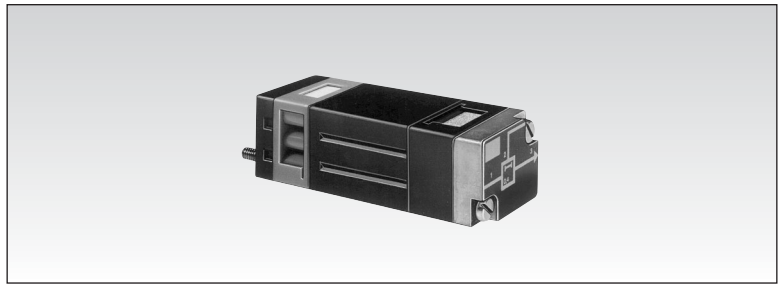


Timers (with fixed timing)

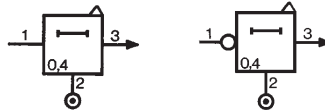


Part numbers

Version	81 503 540	81 506 540
	Positive output (N.C.)	Negative output (N.O.)

1

Symbol

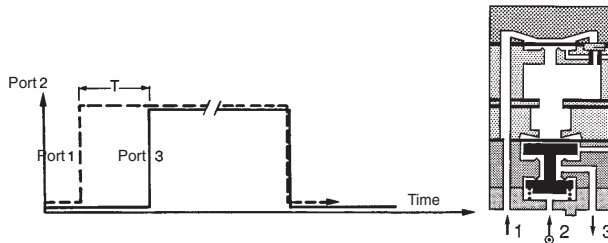


Characteristics

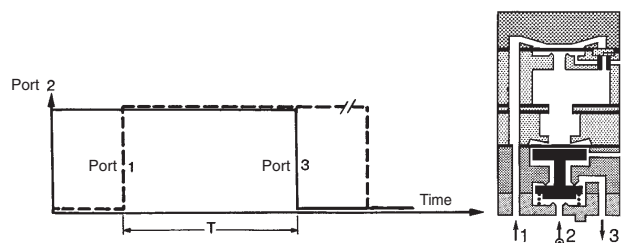
Timing	seconds	0.4	0.4
Operating pressure	psi (bar)	30 > 120 (2 > 8)	30 > 120 (2 > 8)
Flow at 90 psi (6 bars)	cfm (NI/min)	6 (170)	6 (170)
Orifice diameter	inches (mm)	0.106 (2.7)	0.106 (2.7)
Accuracy	%	± 5	± 5
Min. reset time	seconds	<0.1	<0.1
Connection - On sub-base page 5/44 - 5/45		●	●
Operating temperature	°F (°C)	+20 > +120 (-5 > +50)	+20 > +120 (-5 > +50)
Mechanical life	operations	10 million	10 million
Weight	grams	106	106
Relay color		orange	dark gray

Principle of operation

with positive output (N.C.)

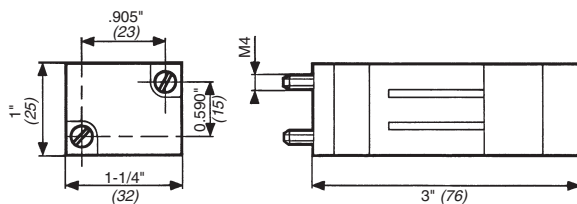


with negative output (N.O.)



Dimensions

81 503 540 - 81 506 540



Use (metric) dimensions for critical data.

Other information	To order, specify :
	<p>Standard products</p> <p>1 Part number</p> <p>Example : Timers (with fixed timing) - 81 503 540</p> <p>Standard products, non stocked</p>

5

Products and specifications subject to change without notice.

Order/Technical Support – Tel: (800) 677-5311 / FAX: (800) 677-3865 / www.crouzet-usa.com