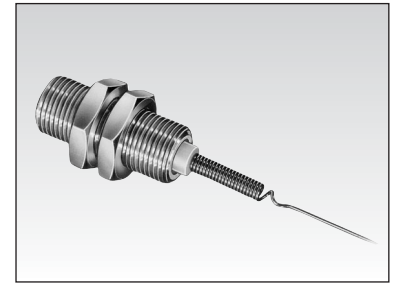
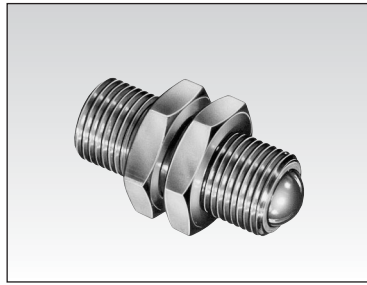


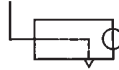
"Sensitive" position detectors



Part numbers

	81 512 201	81 512 401
Version	with ball	with wire
Symbol		

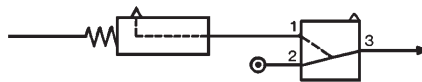
1



Characteristics

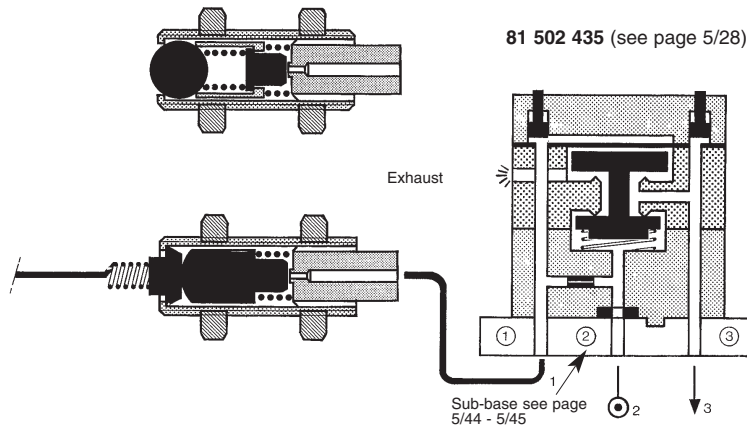
Push-in connection for semi-rigid tubing O.D. (NFE 49100)	inches (mm)	5/32" (4)	5/32" (4)
Life at 90 psi (6 bars)	cycles	10 million	10 million
Actuation force at 90 psi (6 bars)	oz (N)	2.77 (0.8)	0.09 (0.025)
Supply provided by leak sensor relay		●	●
Operating temperature	°F (°C)	+20>+120 (-5>+50)	+20>+120 (-5>+50)
Weight	(grams)	24.5	23.5

Connection



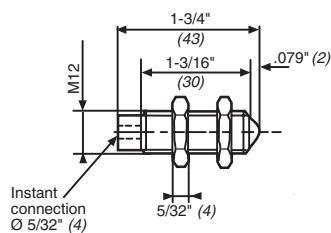
Principle of operation

Supplied at industrial pressure, the relay produces a permanent bleed at its input port. A sensor shutting off this bleed causes the relay to switch.

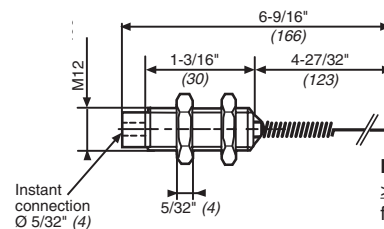


Dimensions

81 512 201



81 512 401



Note:
≥ 8° deflection
for actuation

Note: Clearance hole of Ø 1/2" (12.5) or threaded hole M12 required for mounting.

use (metric) for critical data

Other information	To order, specify :
	<p>Standard products</p> <p>1 Part number Example : "Sensitive" position detectors - 891 592 201</p>

Products and specifications subject to change without notice.

Order/Technical Support – Tel: (800) 677-5311 / FAX: (800) 677-3865 / www.crouzet-usa.com