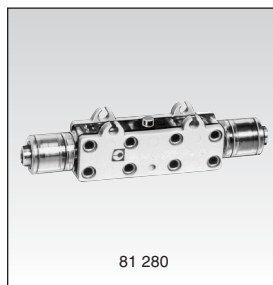
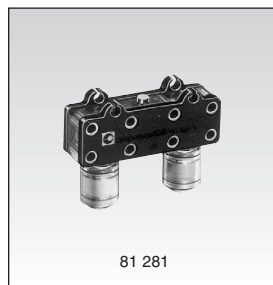


"Microvalve" series position detectors



81 280



81 281

1

Part numbers

Version	NO (grey body color)	81 280 010	81 281 010	—
	NC (black body color)	81 280 510	81 281 510	81 283 510 not shown
Features		Horizontal output	Vertical output	Rear connection by screw

Symbol

NO



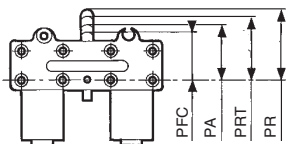
NC



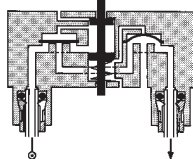
Characteristics

Operating pressure	psi(bar)	30 > 120 (2 > 8)	30 > 120 (2 > 8)	30 > 120 (2 > 8)
Orifice diameter	inches(mm)	0.106 (2.7)	0.106 (2.7)	0.106 (2.7)
Flow at 6 bars 90 psi (6 bar)	cfm(Nl/min)	7 (200)	7 (200)	4.8 (138)
Operating force 90 psi (6 cm)	oz. (N)	50 (15)	50 (15)	50 (15)
Effective travel	inches(mm)	0.04" (1)	0.04" (1)	0.04" (1)
Push-in connection for O.D. semi-rigid tubing (NFE 49100)	inches(mm)	5/32" (4)	5/32" (4)	5/32" (4)
Operating temperature	°F(°C)	+20 > +120 (-5 > +15)	+20 > +120 (-5 > +15)	+20 > +120 (-5 > +15)
Mechanical life	operations	5 million	5 million	5 million
Weight	grams	14	14	20

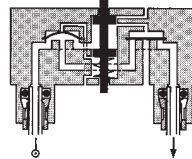
Principle of operation



NC



NO



Actuation positions :

PFC : End of travel position.....	0.423" (10.75)
PA : Operating position (max output kV).....	0.449" (11.4)
PRT : Release position (max. exhaust kV).....	0.463" (11.75)
PR : Rest position.....	0.488" (12.4)

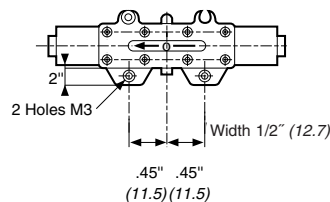
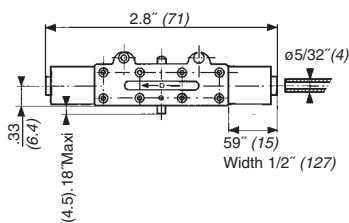
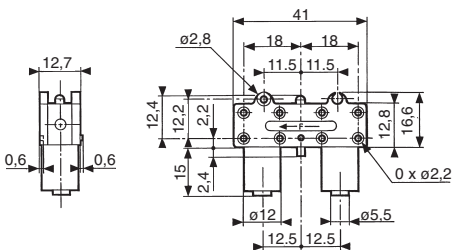
Non-connectable exhaust port is on the "output" side.

Dimensions

81 281 010 - 81 281 510

81 280 010 - 81 280 510

81 283 510



Use (metric) dimensions for critical data

Other information	To order, specify :
	<p>Standard products</p> <p>1 Part number</p> <p>Example : "Microvalve" series position detectors - 81 280 010</p> <p>Standard products, non stocked</p>

Products and specifications subject to change without notice.

Order/Technical Support – Tel: (800) 677-5311 / FAX: (800) 677-3865 / www.crouzet-usa.com