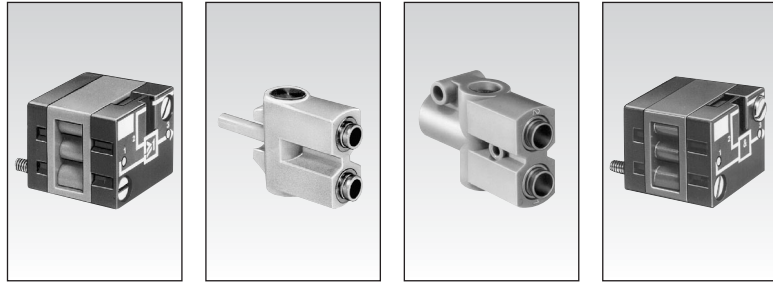


# Logic elements

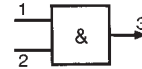
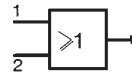


1

## Part numbers

Functions	OR	81 521 501	81 540 001	81 540 004	81 522 501
	AND	—	—	—	—
	YES	—	—	—	—
	NOT	—	—	—	—
Version		On sub-base page 5/44 - 5/45	Plug-in Ø 5/32" (4mm)	Plug-in Ø 5/32" (4mm)	On sub-base page 5/44 - 5/45

## Symbol



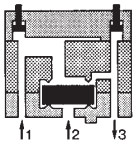
## Characteristics

Push-in connection for semi-rigid tubing (NFE 49100) O.D.	Male/Female/Female	—	Ø 5/32" (4 mm)	—	—
	Female/Female/Female	—	—	Ø 1/4" (6.35 mm)	—
Color		Blue	Blue	Blue	Green
Operating pressure	psi (bar)	30 > 120 (2 > 8)	30 > 120 (2 > 8)	30 > 120 (2 > 8)	30 > 120 (2 > 8)
Orifice diameter	inches (mm)	0.106" (2.7)	0.106" (2.7)	0.157" (4)	0.106" (2.7)
Flow at 90 PSI (6 bars)	cfm (NI/min)	6 (170)	6 (170)	7 (200)	6 (170)
Pressure indicator		•	—	—	•
Switching time	ms	—	—	—	—
Operating temperature	°F (°C)	+20 > +120 (-5 > +50)	+20 > +120 (-5 > +50)	+20 > +120 (-5 > +50)	+20 > +120 (-5 > +50)
Mechanical life	cycles	10 million	10 million	10 million	10 million
Weight	grams	25	12	25	25

## Pilot/pressure curves

P.p : Pilot pressure  
P.a : Supply pressure

## Principle of operation

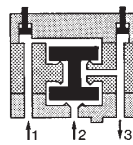


### OR element

The output signal "S" is present when a signal at "a" OR "b" is present

$$S = a \text{ OR } b$$

$$S = a + b$$



### AND element

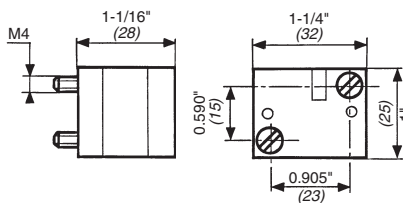
The output signal "S" is present only when signals "a" AND "b" are present simultaneously.

$$S = a \text{ AND } b$$

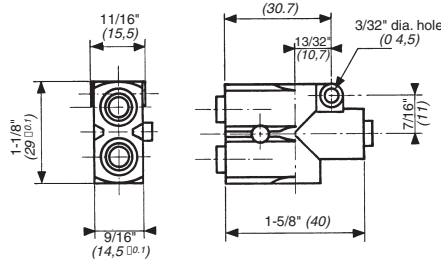
$$S = a \cdot b$$

## Dimensions

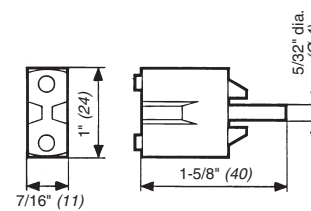
81 521 501 - 81 522 501



81 540 004 - 81 541 010



81 540 001 - 81 541 001



Use (metric) dimensions for critical data.

## Other information

See page 4/8 for mounting plan for logic elements.

Products and specifications subject to change without notice.

Order/Technical Support – Tel: (800) 677-5311 / FAX: (800) 677-3865 / www.crouzet-usa.com

