



■ Flow



■ Level



■ Pressure

**Measure
Display
Monitor**

Millenium³ Pressure

www.millenium3.crouzet.com

To each industry, its own solution!




Discover the new “All in one” solution for your pressure, level and flow applications. With this integrated solution, Crouzet reinforces its offer in specialising in control solutions adapted to your requirements :

- **Millenium 3 Logic Controller (24 V DC)** «compact» or «expandable» version,
- **11 Sensor Part Numbers** compatible with most neutral fluids and gasses,
- **4 dedicated function blocks** (Pressure gain, Flow, Level, High-Low Switch) included in the specific function library to ensure product compatibility and give you access to the Millenium 3's easy programming.

Millenium 3 Pressure is the answer to numerous applications:

- Measure hydraulic pressure on agricultural equipment,
- Remote maintenance of fluid levels in pumping stations ,
- Calculate the volume used on a watering system...

Logic Controller Millenium 3 - Voltage 24 V DC

	Description	Inputs	Outputs	Part number
	CD12* Compact version	8 digital (including 4 analogue)	4 relays 8 A	88970041
	CD20* Compact version	8 digital (including 4 analogue)	4 solid state 0.5 A (including 1 PWM)	88970042
	CD20* Compact version	12 digital (including 4 analogue)	8 relays 8 A	88970051
	CB12* Compact version	12 digital (including 4 analogue)	8 solid state 0.5 A (including 4 PWM)	88970052
	CB20* Compact version	8 digital (including 4 analogue)	4 relays 8 A	88970021
	XD10** Expandable version	12 digital (including 4 analogue)	8 relays 8 A	88970031
	XD10** Expandable version	6 digital (including 4 analogue)	4 relays 8 A	88970141
	XD26** Expandable version	6 digital (including 4 analogue)	4 solid state 0.5 A (including 1 PWM)	88970142
	XD26** Expandable version	16 digital (including 6 analogue)	10 relays (8 x 8 A relay and 2 x 5 A relay)	88970161
		16 digital (including 6 analogue)	10 solid state 0.5 A (including 4 PWM)	88970162

* Used with an input signal converter 0-20 mA/0-10 V (ref.88950108)

** Used with an input signal converter 0-20 mA/0-10 V or analogue Extension XA04 (ref.88970241)

Analogue pressure transmitters 4-20 mA Voltage 12-32 V DC

Description	Measurement range***	Part number
Capacitive pressure transmitter: Relative*	0 → 0,25 bar	89210001
Capacitive pressure transmitter: Relative*	0 → 1 bar	89210002
Capacitive pressure transmitter: Relative*	0 → 2,5 bar	89210003
Capacitive pressure transmitter: Relative*	0 → 10 bar	89210004
Capacitive pressure transmitter: Relative*	0 → 25 bar	89210005
Capacitive pressure transmitter: Relative*	0 → 60 bar	89210006
Capacitive pressure transmitter: Absolute**	0 → 1 bar	89210007
Capacitive pressure transmitter: Absolute**	0 → 2,5 bar	89210008
Capacitive pressure transmitter: Absolute**	0 → 10 bar	89210009
Capacitive pressure transmitter: Absolute**	0 → 25 bar	89210010
Capacitive pressure transmitter: Absolute**	0 → 100 bar	89210011

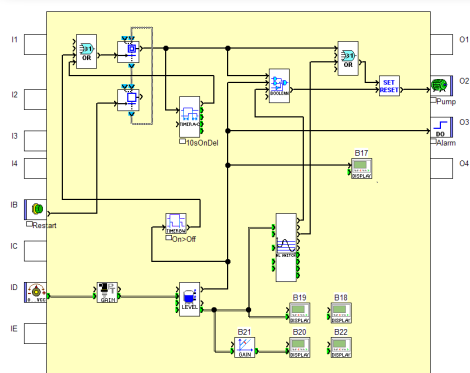


Capacitive pressure transmitter

* In relation to the atmospheric pressure - ** In relation to vacuum -





*** Others Pressure Range on request

Millenium 3 Software



Description	Part number
M3 SOFT - Multilingual programming software (CD-ROM)	88970100
M3 SPECIFIC FUNCTIONS - Libraries of specific functions (CD-ROM)	88970103
M3 ALARM - Alarm management software (CD-ROM)	88970116

4 dedicated functions blocks included in the programming software M3 SPECIFIC FUNCTIONS (réf. : 88970103)

-  **Pressure gain**
This function makes it possible to make the interface between the sensors and Millenium 3.
-  **Level**
This function makes it possible to calculate the height of the liquid in a tank open or closed with or without density constant using pressure sensors.
-  **Flow**
This function makes it possible to calculate the flow of a fluid in a conduit using a pressure reducing orifice or the measurement of a dynamic pressure.
-  **High-Low Switch**
This function carries out the comparison of a value compared to 5 thresholds.

Accessories for Millenium 3



Description	Part number
Modem communication interface	88970117
GSM modem	88970118
RTC modem	88970119
Ethernet server communication extension	88970250
Modbus RS-485 slave communication extension	88972250
Remote LCD alphanumeric displays (Monocolour screen)	88970844
Remote LCD alphanumeric displays (Three-chrome screen)	88970849
Remote LCD displays/keypads	88970412
Remote LCD displays/keypads + 4 function buttons	88970413
Remote LED display - Input 0-10 V	88950400
3 m USB link cable: PC → Millenium 3	88970109
Millenium 3 → Bluetooth interface (class A 10 m)	88970104

Distributed by:

Find more information on our website:
www.millenium3.crouzet.com