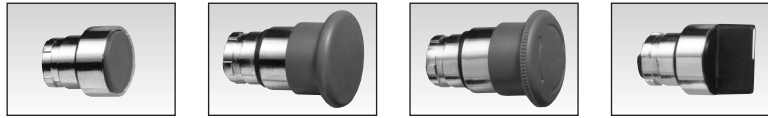


Actuators (Ø 22 mm) for manually operated valves



Part numbers		1			
Push buttons	Red	24 679 129	24 679 173	24 679 171	—
	Green	24 679 128	—	—	—
	Black	24 679 127	24 679 172	—	—
2-position rotary switches	—	—	—	—	24 679 174
3-position rotary switches	—	—	—	—	—
Function	—	Flush push contact	Emergency stop plastic Ø 40	Emergency stop Ø 40 mm push-turn	Black symmetrical actuator

Symbol				

Position				

Weight	g	30	45	45	45
Dimensions		24 679 127 - 24 679 128		24 679 171 - 24 679 172	
		24 679 129		24 679	



Part numbers		1			
2-position rotary switches	24 679 180	—	24 679 176	24 679 178	24 679 182
3-position rotary switches	—	—	—	—	24 679 181
Function	RONIS key 455 removable in position 0	—	Black symmetrical actuator	Black symmetrical actuator with return	RONIS key 455 remov. in pos. 0 3 positions with spring to centre

Symbol					

Position					

Weight	70	45	45	70	70
Dimensions		24 679 174 - 24 679 176		24 679 180 - 24 679 181	
		24 679 178		24 679 182	

To order, specify:

Standard products **1** Part number
 Example : Actuators Ø 22 mm 24 679 129

Products and specifications subject to change without notice.

Order/Technical Support – Tel: (800) 677-5311 / FAX: (800) 677-3865 / www.crouzet-usa.com