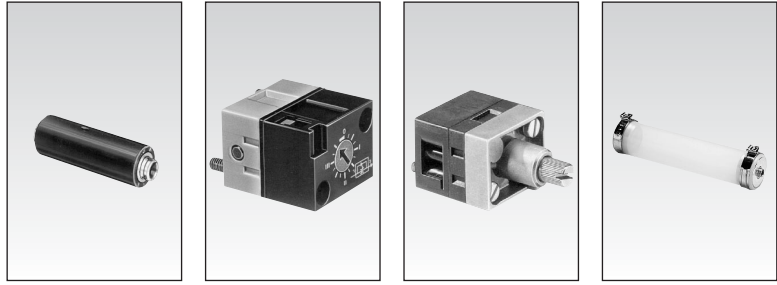


# Timer components

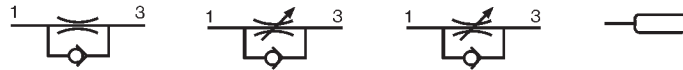


1

## Part numbers

One-way in-line fixed flow restrictors	Flow at 4 bars NI/min	Ø orifice (mm)	Color	Part numbers			
				81 529 003	81 529 004	81 529 005	81 529 006
	0.18 → 0.30	0,3	white	81 529 003	—	—	—
	0.35 → 0.50	0,4	yellow	81 529 004	—	—	—
	0.58 → 0.77	0,5	red	81 529 005	—	—	—
	0.80 → 1.06	0,6	green	81 529 006	—	—	—
	1.10 → 1.39	0,7	blue	81 529 007	—	—	—
	1.45 → 1.65	0,8	grey	81 529 008	—	—	—
	2.30 → 2.80	1	black	81 529 010	—	—	—
	2.08 → 0.12	0,25	white	81 529 025	—	—	—
One-way adjustable flow restrictor				—	81 525 101	81 526 001	—
Capacity for timing	10 • 60 s			—	—	—	79 452 808

## Symbol

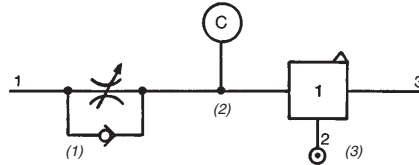


## Characteristics

Free flow	cfm	(NI/min)	Depending on orifice	1.06	(30)	7	(200)	—
Orifice diameter	inches	(mm)	Depending on orifice	0 > 0.02	(0 > 0.5)	0 > 0.07	(0 > 1.7)	—
Operating pressure	psi	(bars)	15 > 120	(1 > 8)	15 > 120	(1 > 8)	30 > 120	(2 > 8)
Timing	seconds		—	—	—	—	—	10 > 60 or 60 > 180
Capacity	Cu. in.	(cm <sup>3</sup> )	—	—	—	—	—	1.8 (30) > 5.5 (90)
Connection	Sub-base page 5/44 - 5/45 Push-in connection for semi-rigid tubing (NFE 49100)		mm	Ø 4	—	—	—	Ø 4
Weight	g		8	60	70	40		

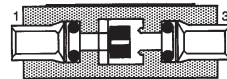
## Connections

- For timing circuit
- One-way flow restrictor 81 525 0 - 81 529 0 (1)
  - Reservoir 79 452 808 (2)
  - Relay element 81 503 0 - 81 506 0 (3) page 4/7
- Sub-base page 4/14 - 4/15

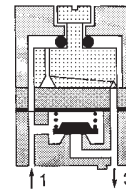


## Principle of operation

One-way with fixed flow



One-way with adjustable flow



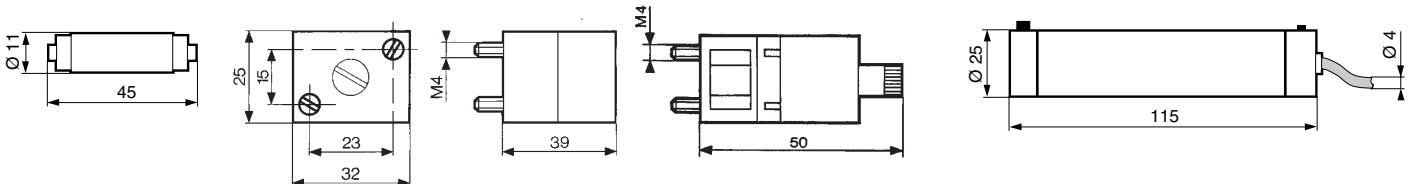
## Dimensions

81 529

81 525 101

81 526 001

79 452 808



## Other information

One-way flow restrictor with orifice diameter of 1.4 mm on request.

## To order, specify :

Standard products

**1** Part number  
Example : Restrictor - 81 529 003

Products and specifications subject to change without notice.

Order/Technical Support – Tel: (800) 677-5311 / FAX: (800) 677-3865 / www.crouzet-usa.com