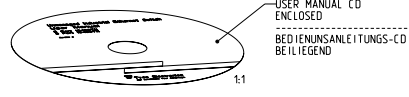
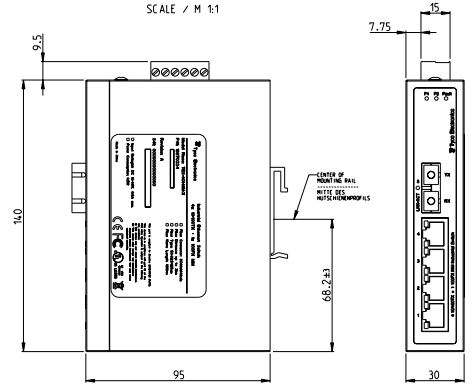


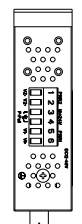
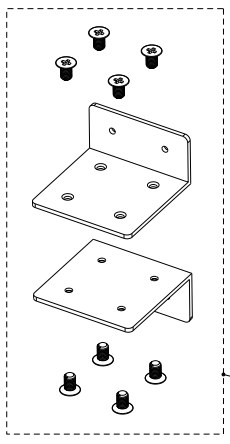
REV. NO.	DATE	REV. BY	REV. DESCRIPTION	REV. APPROVED	REV. CHECKED	REV. DRAWN	REV. ENGINEER	REV. DESIGNER	REV. PROJECT MANAGER	REV. SALES	REV. PURCHASING	REV. LOGISTICS	REV. QUALITY CONTROL	REV. CUSTOMER SERVICE	REV. R&D	REV. MFG	REV. SUPPLY	REV. DISTRIBUTION	REV. TRAINING	REV. SUPPORT	REV. OTHER
A1	-	-	NEW DRAWING PUBLISHED	WALDHOFF	STO	OK															
A2	-	-	SEE PEN E-07-07454	WALDHOFF	BB	OK															
A3	-	-	DRAWING CHANGED PER PEN E-07-07592A	WALDHOFF	STO	B.K.															
A4	-	-	REV. PER PEN E-08-009550	WALDHOFF	STO	B.K.															

1987033-1 AS SHOWN

SCALE / M 1:1

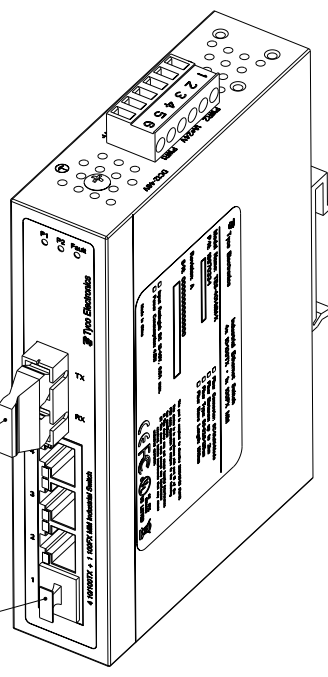


HARDWARE SPECIFICATION	
1	ETHERNET STANDARD COMPLIANCE IEEE 802.3 - 10BASE-T IEEE 802.3u - 10BASE-TX AND 100BASE-FX IEEE 802.3z - FLOW CONTROL AND BACK PRESSURE
2	SWITCH ARCHITECTURE STORE-AND-FORWARD SWITCHING ARCHITECTURE BACKPLANE USING CARRIER FABRICS (CDB) PACKET THROUGHPUT ABILITY FULL DUPLEX 1.488Mbps @ 64bytes
3	TRANSFER RATE 10BASE-T FIBER: 10.488Mbps 100BASE-TX/FP: 100 Mbps
4	MAC ADDRESS TABLE 8K MAC ADDRESS TABLE
5	ETHERNET PORTS - 4x 10/100/1000 RJ-45 - 4x 10/100/1000 SFP FOR MULTI-MODE (MM), MAX. WAVE LENGTH 1300nm MULTI-MODE FIBER: 50/125µm-62.5/125µm, MAX. DISTANCE 2km AUTO MDI/MDI-X SUPPORT
6	LED PER UNIT: POWER 1 (GREEN), POWER 2 (GREEN), FAULT (RED) PER PORT: LINK/ACT (GREEN), FULL DUPLEX/COLLISION (YELLOW)
7	POWER SUPPLY 5V DC RANGE SUPPLY: 15 TO 18 V DC REVERSE POLARITY PROTECTED OVERLOAD CURRENT PROTECTED (RE-SETTABLE FUSE)
8	POWER CONSUMPTION 4.5 WATTS

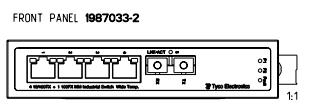
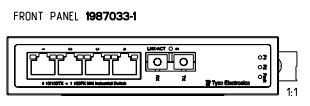


DUST COVER FOR FIBER PORT
1 x ENCLOSED
STAUBSCHUTZKAPPE
FUER FASER-
OPTISCHEN EINGANG
1 x BEILIEGENDE

DUST COVER FOR RJ45 PORT
4 x ENCLOSED
STAUBSCHUTZKAPPE
FUER RJ45-EINGANG
4 x BEILIEGENDE



1987033-1 AS SHOWN



TYCO ELECTRONICS ORDER NO. BESTELL-NR.			
1	-	2	4 10/100/1000 + 1 100FX MM SWITCH TES-401-MM-XE WIDE OPERATING TEMPERATURE RANGE -40°C TO 75°C
-	1	1	4 10/100/1000 + 1 100FX MM SWITCH TES-401-MM-X STANDARD OPERATING TEMPERATURE RANGE -10°C TO 60°C
QUANTITY	ITEM NO.	DESCRIPTION	REMARKS

REV. NO.	DATE	REV. BY	REV. DESCRIPTION	REV. APPROVED	REV. CHECKED	REV. DRAWN	REV. ENGINEER	REV. DESIGNER	REV. PROJECT MANAGER	REV. SALES	REV. PURCHASING	REV. LOGISTICS	REV. QUALITY CONTROL	REV. CUSTOMER SERVICE	REV. R&D	REV. MFG	REV. SUPPLY	REV. DISTRIBUTION	REV. TRAINING	REV. SUPPORT	REV. OTHER	
A	00779	-	INDUSTRIAL ETHERNET SWITCH TES-401-MM-XE 4x 10/100/1000 + 1x 100FX MM	WALDHOFF	STO	OK																