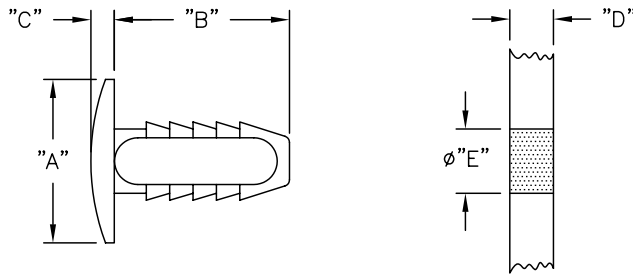


PART NO.	DIM. "A"	DIM. "B"	DIM. "C"	PANEL THICKNESS "D"	HOLE DIA. "E"
NR-92-1	.551 (14.0)	.591 (15.0)	.079 (2.0)	.118-.433 (3.0-11.0)	.228 (5.8)
NR-92-2	.630 (16.0)	.748 (19.0)		.118-.591 (3.0-15.0)	
NR-92-4	.709 (18.0)	.906 (23.0)		.118-.748 (3.0-19.0)	



NOTES:

1. MATERIAL: NYLON 6/6 (RMS-01).
2. COLOR: NATURAL.
 COLOR BLACK AVAILABLE BY SPECIAL ORDER.
 TO ORDER ADD SUFFIX "B" TO PART NO.
 EXAMPLE: NR-92-XB

TITLE: NYLON RIVET			DWG IN IN (MM)		FINAL	PRINT TYPE
TOLERANCES UNLESS NOTED .XX=±.010 .XXX=±.005 FRAC=±1/64 ANG=±1°	FILE # NR MAT'L: SEE NOTES RE: RICHCO, INC.	DWN: E.P. DT: 9-23-98	APP: DT:	PART # NR-92 SERIES		
B SEE ECN #485 FOR CHANGES SM 10.10.02	A CHANGED FILE NO. SM 03.12.02	REV DESCRIPTION ENGR DATE	RICHCO INC. PO BOX 804238, CHICAGO, 60680 (773) 539-4060			