

FIG 1.  
SLP100 SERIES

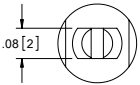
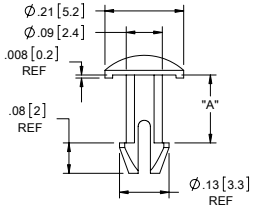


FIG 2.  
SLP-1-100 SERIES

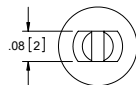
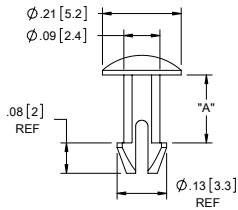
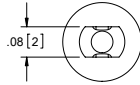
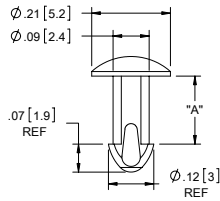


FIG 3.  
SLP-2-100 SERIES



- NOTES:  
 1. MATERIAL: NYLON 6/6 UL 94 V-2 (RMS-01).  
 -NYLON 6/6 UL 94 V-0 (RMS-19) AVAILABLE BY SPECIAL ORDER.  
 TO ORDER REPLACE "-01" WITH "-19".  
 2. COLOR: NATURAL.  
 3. ALL PARTS TO SNAP-LOCK IN A .098±.002 [2.5±0.05] DIA. HOLE.

FIG 1	FIG 2	*FIG 3	DIM. "A"±.015
SLP100-177-01	SLP-1-100-177-01	SLP-2-100-177-01	.177 [4.5]
SLP100-221-01	SLP-1-100-221-01	SLP-2-100-221-01	.220 [5.6]
SLP100-236-01	SLP-1-100-236-01	SLP-2-100-236-01	.236 [6]
SLP100-245-01	SLP-1-100-245-01	SLP-2-100-245-01	.245 [6.2]
SLP100-307-01	SLP-1-100-307-01	SLP-2-100-307-01	.307 [7.8]
SLP100-316-01	SLP-1-100-316-01	SLP-2-100-316-01	.316 [8]
SLP100-330-01	SLP-1-100-330-01	SLP-2-100-330-01	.330 [8.4]
SLP100-413-01	SLP-1-100-413-01	SLP-2-100-413-01	.413 [10.5]
SLP100-638-01	SLP-1-100-638-01	SLP-2-100-638-01	.638 [16.2]
SLP100-660-01	SLP-1-100-660-01	SLP-2-100-660-01	.660 [16.8]
SLP100-701-01	SLP-1-100-701-01	SLP-2-100-701-01	.701 [17.8]

\*PARTS AVAILABLE BY SPECIAL ORDER ONLY.

TITLE: <b>SNAP- LOCK PINS</b>					
CREATED USING SOLIDWORKS	FILE #: SLPX	DWN: SK	APP: R.T.		
TOLERANCES UNLESS NOTED .XX±.010 .XX±.005 FRAC ±1/64 ANG ±1°	SHEET: 1 OF 1	SHEET SIZE: B	DT: 11/15/07	CHKD: D.Z.	PART #
REV: B	SEE CO 200083 FOR CHANGES	SK 12/06/07	<b>RICHCO, INC.</b> ENG@RICHCO-INC.COM (773) 539-4060		<b>SEE TABLE</b> <b>CA</b>
REV: A	RELEASED FOR PRODUCTION, CO 200066	SK 11/19/07			
REV:	DESCRIPTION	ENGR. DATE			