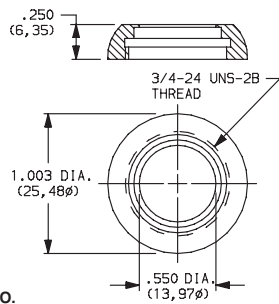


DRESS NUTS

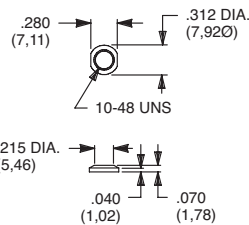
Switchlocks: Y, H & A Series



PART NO.

531300201 NICKEL PLATE
531300535 POLISHED NICKEL PLATE
175052745 ALUMINIUM BLACK ANODIZE

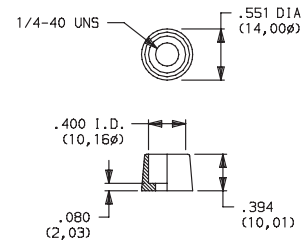
Toggles: T Series Pushbuttons: TP Series



PART NO.

298D01201 NICKEL PLATED
298D01A30 BLACK

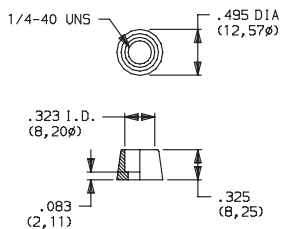
Pushbuttons: 8020, 8060, 8500 & TP Series



PART NO.

580700201 NICKEL PLATED

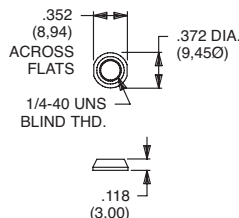
Pushbuttons: 8020, 8060, E010 & TP Series



PART NO.

702501201 NICKEL PLATED
702501A30 BLACK

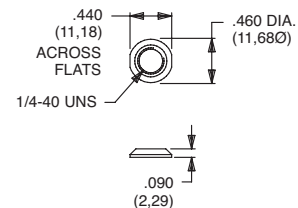
Toggles: 7000, 9000, E & T Series Pushbuttons: 8020, 8060, 8500, E010 & TP Series



PART NO.

709901201 NICKEL PLATED
709901215 SATIN CHROME
709901A30 BLACK

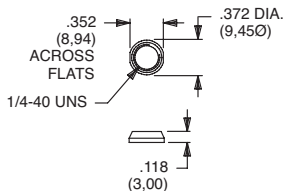
Toggles: 7000, 9000, E & T Series Pushbuttons: 8020, 8060, 8500, E010 & TP Series



PART NO.

776001201 NICKEL PLATED
776002231 BLACK

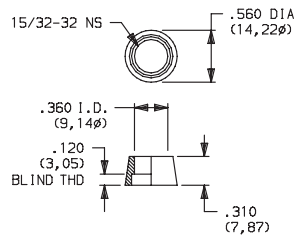
Toggles: 7000, 9000, E & T Series Pushbuttons: 8020, 8060, 8500, E010 & TP Series



PART NO.

299D01201 NICKEL PLATED
299D01215 SATIN CHROME
299D01A30 BLACK

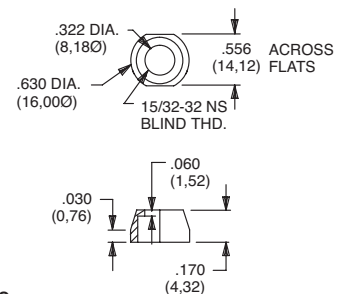
Pushbuttons: 8500 Series



PART NO.

498800201 NICKEL PLATED

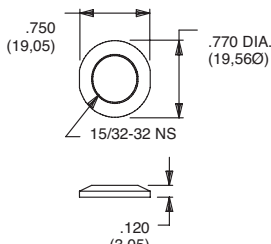
Toggles: 7000 Series, T2P Actuator



PART NO.

605300201 NICKEL PLATED

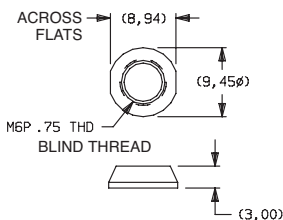
Toggles: 7000 & 9000 Series Pushbuttons: 8500 Series



PART NO.

895101201 NICKEL PLATED
895101A30 BLACK

Toggles: 7000 Series Pushbuttons: 8020 & 8060 Series



PART NO.

709903201 NICKEL PLATED
709903A30 BLACK

MATERIAL

Brass, nickel plated standard. Other finishes available, consult Customer Service center.



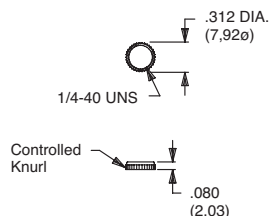
Third Angle
Projection

Dimensions are shown: Inch (mm)
 Specifications and dimensions subject to change

www.ck-components.com

KNURLED NUTS

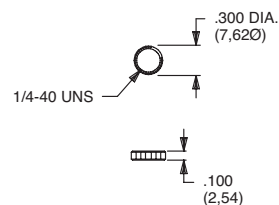
Toggles: 7000, 9000 & T Series
Pushbuttons: 8020, 8060, 8500 & TP Series



PART NO.

778000201 NICKEL PLATED
778000A30 BLACK

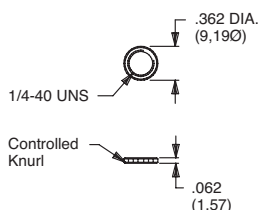
Toggles: 7000, 9000, E & T Series
Pushbuttons: 8020, 8060, 8500, E010 & TP Series



PART NO.

778600201 NICKEL PLATED
778600264 BLACK

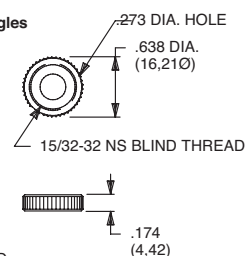
Toggles: 7000, 9000 & T Series
Pushbuttons: 8020, 8060, 8500 & TP Series
Fits Gulmire #12 Socket & Wrench 8942-02-201



PART NO.

796901201 NICKEL PLATED
796901A30 BLACK

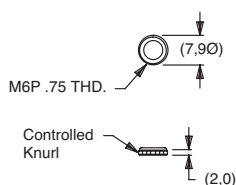
Toggles: 7000 & 9000 Series
Pushbuttons: 8500 Series
Will not fit T, T1, TP & T1P Toggles



PART NO.

471300201 NICKEL PLATED
471300A30 BLACK

Toggles: 7000 Series
Pushbuttons: 8020 & 8060 Series



PART NO.

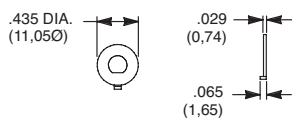
483200201 NICKEL PLATED

MATERIAL

Brass, nickel plated standard. Other finishes available, consult Customer Service center.

LOCKING RINGS

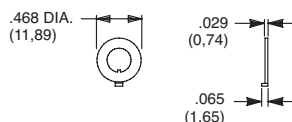
Toggles: T Series
Pushbuttons: TP Series
Fits 10-48 Bushing



PART NO.

465000201 NICKEL PLATED WITH FLAT

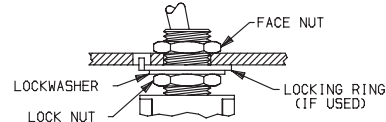
Toggles: 7000, 9000 & T Series
Pushbuttons: 8020, 8060, 8500 & TP Series
Rotary: M Series
Fits 1/4-40 Bushing



PART NO.

700701201 NICKEL PLATED WITH KEYWAY
700701A30 BLACK WITH KEYWAY

PANEL MOUNT ASSEMBLY



TYPICAL ASSEMBLY WITH LOCKING RING

NOTE: We recommend that locknut always be used with non-flanged bushings.

CAUTION: To avoid damaging panel front, always tighten locknut at back of panel. Overtightening mounting nut may cause K2-K12 actuators to bind.

MATERIAL

Brass, nickel plated standard. Other finishes available, consult Customer Service Center.



Third Angle
Projection



Dimensions are shown: Inch (mm)
Specifications and dimensions subject to change

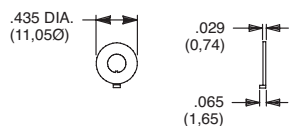
www.ck-components.com



Hardware

LOCKING RINGS

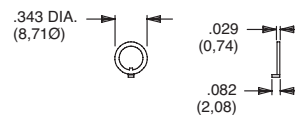
Toggles: T Series
Pushbuttons: TP Series
Fits 10-48 Bushing



PART NO.

465101201 NICKEL PLATED WITH KEYWAY

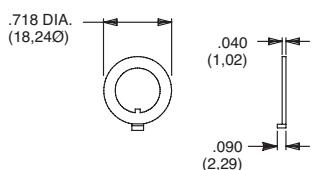
Toggles: 7000, 9000 & T Series
Pushbuttons: 8020, 8060, 8500 & TP Series
Rotary: M Series
Fits 1/4-40 Bushing



PART NO.

753700201 NICKEL PLATED WITH KEYWAY
753700A30 BLACK WITH KEYWAY

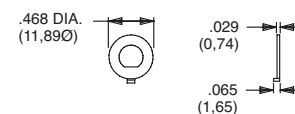
Toggles: 7000 & 9000 Series
Pushbuttons: 8500 Series
Fits 15/32 Bushing



PART NO.

707200201 NICKEL PLATED WITH KEYWAY
707200A30 BLACK WITH KEYWAY

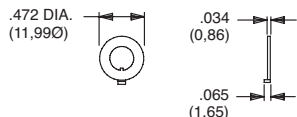
Toggles: 7000, 9000 & T Series
Pushbuttons: 8020, 8060, 8500 & TP Series
Rotary: M Series
Fits 1/4-40 Bushing



PART NO.

757200201 NICKEL PLATED WITH FLAT
757200A30 BLACK WITH FLAT

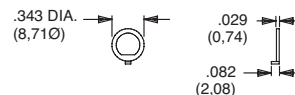
Toggles: 7000 Series
Pushbuttons: 8020 & 8060 Series
Fits M6P2 Metric Bushing



PART NO.

791800201 NICKEL PLATED WITH KEYWAY
791800A30 BLACK WITH KEYWAY

Toggles: 7000, 9000 & T Series
Pushbuttons: 8020, 8060, 8500 & TP Series
Rotary: M Series
Fits 1/4-40 Bushing



PART NO.

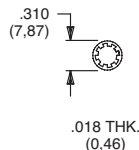
757300201 NICKEL PLATED WITH FLAT
757300A30 BLACK WITH FLAT

MATERIAL

Brass, nickel plated standard. Other finishes available, consult Customer Service Center.

LOCKWASHERS

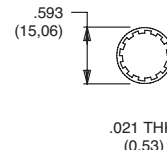
Toggles: T Series
Pushbuttons: TP Series
Fits 10-48 Bushing



PART NO.

465200202 NICKEL PLATED

Toggles: 7000 & 9000 Series
Pushbuttons: 8500 Series
Fits 15/32 Bushing

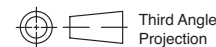


PART NO.

700302202 NICKEL PLATED
700302A30 BLACK

MATERIAL

Steel, nickel plated standard. Other finishes available, consult Customer Service Center.



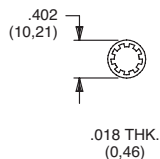
Dimensions are shown: Inch (mm)
Specifications and dimensions subject to change

www.ck-components.com



LOCKWASHERS

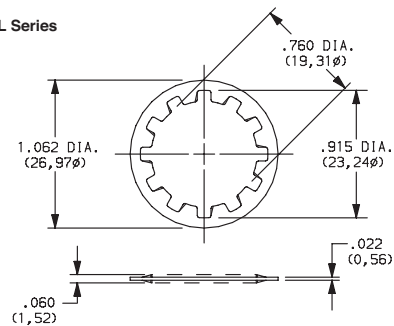
Toggles: 7000, 9000, E & T Series
Pushbuttons: 8020, 8060, 8500, E010 & TP Series
Fits 1/4-40 Bushing



PART NO.

700303202 NICKEL PLATED
700303A30 BLACK

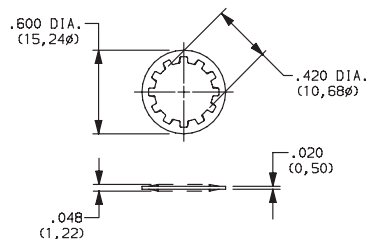
Switchlocks: A, BY, H, W, Y & YL Series
Fits 3/4 Dia. Bushing



PART NO.

175050200 ZINC PLATED

Rotary: A & RTA Series
Fits 3/8 Dia. Thread
M10 X .75 metric

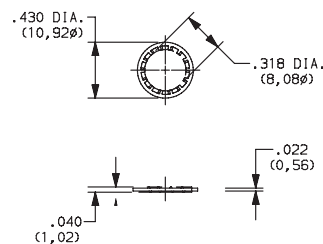


PART NO.

472800202

NICKEL PLATED

Pushbutton: 8700 Series
Rotary: F Series
Fits 5/16 Dia. Thread



PART NO.

135A00000

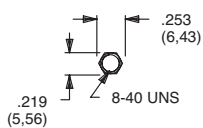
ZINC PLATED

MATERIAL

Steel, nickel plated standard. Other finishes available, consult Customer Service Center.

MOUNTING NUTS

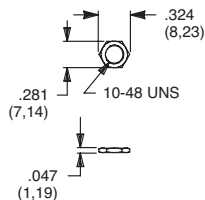
Pushbuttons: 8600 Series



PART NO.

775200201 NICKEL PLATED
775200A30 BLACK

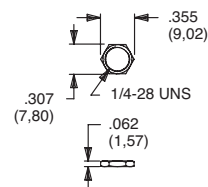
Toggles: T Series
Pushbuttons: TP Series



PART NO.

464900201 NICKEL PLATED
464900A30 BLACK

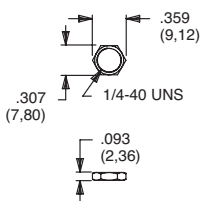
Rotary: M Series



PART NO.

477100201 NICKEL PLATED

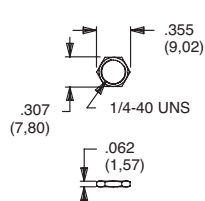
Toggles: E Series
Pushbuttons: E010 Series



PART NO.

540400201 NICKEL PLATED
540400A30 BLACK

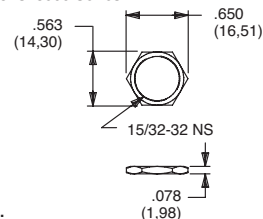
Toggles: 7000, 9000 & T Series
Pushbuttons: 8020, 8060, 8500 & TP Series



PART NO.

700201201 NICKEL PLATED
700201A30 BLACK

Toggles: 7000 & 9000 Series
Pushbuttons: 8500 Series



PART NO.

707100201 NICKEL PLATED
707100215 SATIN CHROME
707100A30 BLACK

MATERIAL

Brass, nickel plated standard. Other finishes available, consult Customer Service Center.



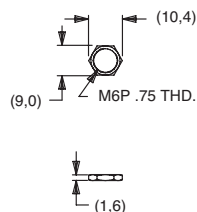
Third Angle
Projection



Hardware

MOUNTING NUTS

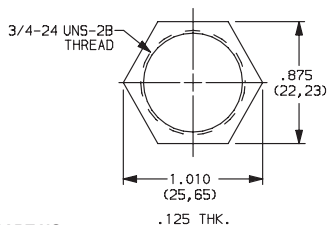
Toggles: 7000 Series
Pushbuttons: 8020 & 8060 Series



PART NO.

791600201 NICKEL PLATED
791600A30 BLACK

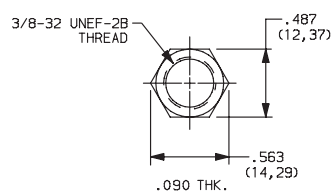
Switchlocks: A, BY, H, P, W, Y & YL Series



PART NO.

175050700
ZINC PLATE

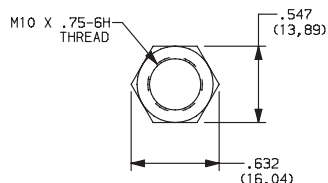
Rotary: A & RTA Series



PART NO.

472706201
NICKEL PLATED

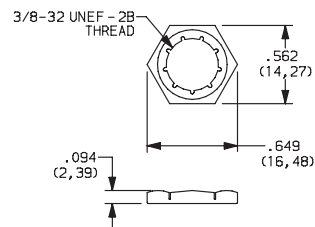
Rotary: A & RTA Series



PART NO.

495100201
NICKEL PLATED

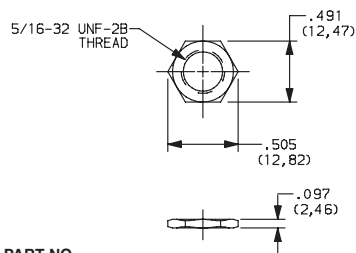
Rotary: H & R Series



PART NO.

925C00000
ZINC, YELLOW TRIVALENT CHROMIUM

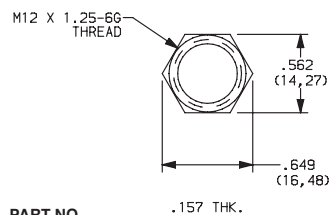
Rotary: F Series



PART NO.

175020201
NICKEL PLATED

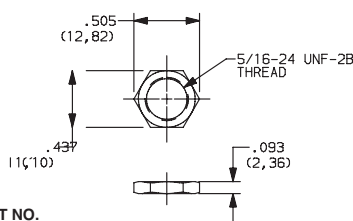
Switchlocks: YM Series



PART NO.

179090A47
ZINC PLATED, CLEAR TRIVALENT CHROMIUM

Pushbutton: 8700 Series



PART NO.

281B00201
NICKEL PLATED

MATERIAL

Brass, nickel plated standard. Other finishes available, consult Customer Service Center.

WRENCHES

PART NO.

778500201

Fits Nut Part Numbers
7002XXXXX, 7099XXXXX
7807XXXXX, 7916XXXXX



PART NO.

894200201

Fits Nut Part Number
7969XXXXX

