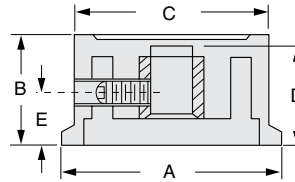


Control Knobs

Instrument Knobs



Customization

In order to save you time and money, Ohmite offers a wide array of secondary operations and finishing services. Most of our parts can be customized to your specific need. Our secondary operations and finishing services include:

- Hot Stamping
- Drilling
- Pad Printing
- Engraving
- Ultrasonic Welding
- Branding
- Paint Fill
- Decorative Pointers
- Machining
- Turning
- Tapping
- Bagging
- Buff and Polish
- Sand Blasting
- 3-D CAD Imaging
- Assembly
- Packaging
- Custom Color Matching
- Kitting
- Silk Screen
- Decorative Inlays
- Plating
- Vacuum Metalizing
- Paint Coatings

FEATURES

- Phenolic material provides heat and impact resistance for durability
- Can be customized with decorative inlays, indicator lines, or slots
- Engraving, hot stamping, and pad printing available for a distinct appearance

SPECIFICATIONS

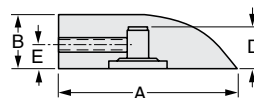
Material type: Thermoset

Inset diam.: 1/4 in.

Ohmite Part	Dimensions (inches)					Set screw	Shaft hole*	Finish**
	A	B	C	D	E			
5200E	25/32	15/32	21/32	13/32	7/32	M3 x 0.5	BB	SDL
5205E	1	37/64	29/32	1/2	27/32	M4 x 0.7	BB	SDL
5210E	19/32	21/32	15/32	33/64	11/32	M4 x 0.7	BB	SDL
5220E	1 3/4	13/16	1 1/2	45/64	1 15/32	M4 x 0.7	BB	SDL
5240E	19/32	35/64	31/64	27/64	23/64	M3 x 0.5	BB	L
5250E	15/16	25/32	3/4	19/32	19/32	M4 x 0.7	BB	L
5300E	17/32	5/8	3/8	7/32	7/16	6-32	PH	SCL
5302E	25/32	5/8	17/32	17/32	9/32	8-32	PH	SCL
5304E	1 1/32	11/16	7/8	17/32	9/32	8-32	PH	SCL
5450E	1 1/16	13/32	5/8	11/32	3/16	8-32	PH	-
5475E	1	1/2	15/16	7/16	9/32	8-32	PH	-

*PH=Plain Hole BB=Brass Bushing **SDL=Silver Disc Lined; L=Lined; SCL=Silver Cap Lined

Pointer Knobs



FEATURES

- Phenolic material provides heat and impact resistance for durability
- Terrific range of styles and sizes
- Indicator line available on several of the pointer knobs for precise settings
- Samples available

SPECIFICATIONS

Material type: Thermoset

Ohmite Part	Dimensions (inches)				Set screw	Insert diam.	Shaft hole*	Finish**
	A	B	D	E				
5400E	27/32	13/32	11/32	3/16	8-32	1/4	PH	-
5470E	1^	1/2	7/16	9/32	8-32	1/4	PH	L
5500E	1^1/8	9/16	9/32	9/32	8-32	1/4	PH	L
5510E	3/4	9/16	13/32	7/32	8-32	1/4	PH	L
5511E	3/4	9/16	7/16	-	-	1/4***	Spring	L
5520E	1^1/2	3/4	5/8	5/16	8-32	1/4	PH	L
5521E	1^1/2	3/4	13/16	5/16	8-32	1/4	BB	L
5522E	1^1/8	5/8	7/16	9/32	8-32	1/4	PH	L
5600E	1^7/32	5/8	1/2	9/32	8-32	1/4	PH	-
5601E	1^7/32	5/8	1/2	9/32	8-32	1/4	PH	L
5602E	1^7/32	5/8	9/32	9/32	8-32	1/4	BB	L
5610E	1^3/16	1/2	7/16	7/32	8-32	1/4	PH	-

*PH=Plain Hole BB=Brass Bushing **L=Lined ***1/4" flatted to 5/32"

Control Knobs

Skirted Knobs

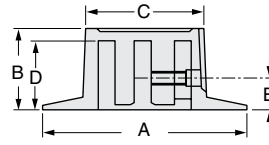


5700E, 5701E

5710E, 5730E, 5740E

5713E, 5719E

5800E



Ohmite Part	Dimensions (inches)					Set screw	Shaft hole*	Finish**
	A	B	C	D	E			
5700E	1/2	5/8	15/32	1/2	3/16	6-32	PH	-
5701E	1/2	5/8	15/32	1/2	3/16	6-32	PH	L
5710E	3/4	1/2	17/32	13/32	7/32	8-32	PH	L
5713E	1 1/8	5/8	13/16	1/2	9/32	8-32	PH	L
5719E	1 1/8	5/8	1 1/4	1/2	9/32	8-32	BB	L
5730E	1 1/2	7/8	1 1/64	3/4	9/32	8-32	PH	SDL
5740E	2 1/32	15/16	1 3/8	13/16	5/16	8-32 (2)	PH	SDL
5800E	1 1/2	1 1/16	5/8	9/16	9/32	8-32	PH	L

*PH=Plain Hole BB=Brass Bushing **L=Lined SD=Silver Disc SDL=Silver Disc Lined

FEATURES

- Available in phenolic to provide appearance, strength, and heat resistance for a variety of applications
- Sizes, shapes, decorative inlays, and graphics to enhance your products
- Engraving, hot stamping, and pad printing available
- Skirt adds level of decoration
- Samples available

SPECIFICATIONS

Material type: Thermoset

Inset diam.: 1/4 in.



Customization

In order to save you time and money, Ohmite offers a wide array of secondary operations and finishing services. Most of our parts can be customized to your specific need. Our secondary operations and finishing services include:

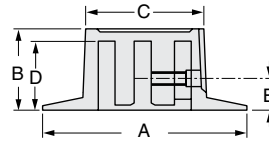
- Hot Stamping
- Drilling
- Pad Printing
- Engraving
- Ultrasonic Welding
- Branding
- Paint Fill
- Decorative Pointers
- Machining
- Turning
- Tapping
- Bagging
- Buff and Polish
- Sand Blasting
- 3-D CAD Imaging
- Assembly
- Packaging
- Custom Color Matching
- Kitting
- Silk Screen
- Decorative Inlays
- Plating
- Vacuum Metalizing
- Paint Coatings

Transilluminated/Soft Touch Knobs



5940E, 5920E, 5930E

5941E, 5921E, 5931E



Ohmite Part	Dimensions (inches)				Ohmite Part	Dimensions (inches)			
	A	B	D	E		A	B	D	E
Transilluminated Knobs					Soft Touch Knobs				
5941E	1 3/8	27/32	23/32	1/4	5940E	1 3/8	27/32	23/32	1/4
5921E	1 5/8	61/64	7/8	1/4	5920E	1 5/8	61/64	7/8	9/32
5931E	1 57/64	1	7/8	9/32	5930E	1 57/64	1	7/8	5/16

FEATURES

- Soft thermoplastic elastomer
- Two shot molding process enables multiple materials to be embedded into one part
- Available in black TPE over white or clear indicator to provide comfort and style to your application
- Call for any other color or combination
- Matte finish

SPECIFICATIONS

Material type: Thermoplastic overmold

Inset diam.: 1/4 in.

Set screw: 8-32

Shaft hole: Brass bushing

Finish: Matte