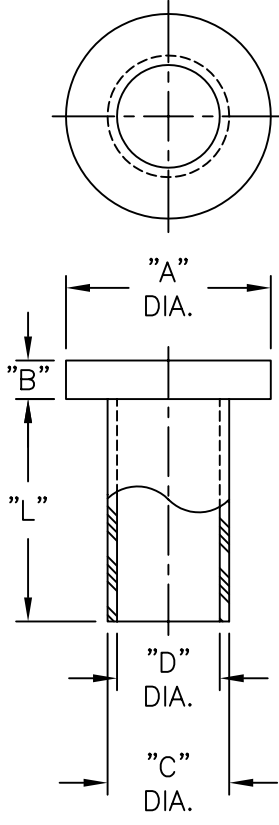


PART NO.	SCREW SIZE	APPROX. METRIC EQUIV.	"L"±.007 (±0.18)	"A"±.007 (±0.18)	"B"±.007 (±0.18)	"C"±.005 (±0.13)	"D"±.005 (±0.13)
MNI #2-2	#2	M2.2	.031 (0.8)	.181 (4.6)		.120 (3.0)	.090 (2.3)
MNI #2-4			.063 (1.6)				
MNI #2-6			.093 (2.4)				
MNI #2-8			.125 (3.2)				
MNI #2-12			.187 (4.7)				
MNI #2-16			.250 (6.4)				
MNI #2-24	.375 (9.5)						
MNI #4-2	#4	M3	.031 (0.8)	.235 (6.0)	.047 (1.2)	.145 (3.7)	.115 (2.9)
MNI #4-3			.046 (1.2)				
MNI #4-4			.063 (1.6)				
MNI #4-5			.084 (2.1)				
MNI #4-6			.093 (2.4)				
MNI #4-8			.125 (3.2)				
MNI #4-10			.156 (4.0)				
MNI #4-12			.187 (4.7)				
MNI #4-16			.250 (6.4)				
MNI #4-24			.375 (9.5)				
MNI #5-3	#5		.050 (1.3)	.370 (9.4)		.236 (6.0)	.128 (3.3)
MNI #6-2	#6	M3.5	.031 (0.8)	.290 (7.4)		.170 (4.3)	.140 (3.6)
MNI #6-4			.063 (1.6)				
MNI #6-6			.093 (2.4)				
MNI #6-8			.125 (3.2)				
MNI #6-12			.187 (4.7)				
MNI #6-16			.250 (6.4)				
MNI #6-24	.375 (9.5)						
MNI #6-32	.500 (12.7)						
MNI #8-2	#8	M4	.031 (0.8)	.344 (8.7)		.205 (5.2)	.173 (4.4)
MNI #8-4			.063 (1.6)				
MNI #8-6			.093 (2.4)				
MNI #8-8			.125 (3.2)				
MNI #8-12			.187 (4.7)				
MNI #8-16			.250 (6.4)				
MNI #8-24	.375 (9.5)						
MNI #8-32	.500 (12.7)						
MNI #10-2	#10	M5	.031 (0.8)	.399 (10.1)	.063 (1.6)	.260 (6.6)	.200 (5.1)
MNI #10-4			.063 (1.6)				
MNI #10-6			.093 (2.4)				
MNI #10-8			.125 (3.2)				
MNI #10-12			.187 (4.7)				
MNI #10-16			.250 (6.4)				
MNI #10-24	.375 (9.5)						
MNI #10-32	.500 (12.7)						
MNI 1/4-2	1/4	M6	.031 (0.8)	.513 (13.0)	.065 (1.7)	.312 (7.9)	.260 (6.6)
MNI 1/4-4			.063 (1.6)				
MNI 1/4-6			.093 (2.4)				
MNI 1/4-8			.125 (3.2)				
MNI 1/4-12			.187 (4.7)				
MNI 1/4-16			.250 (6.4)				
MNI 1/4-24	.375 (9.5)						
MNI 1/4-32	.500 (12.7)						
MNI 5/16-2	5/16	M8	.031 (0.8)	.620 (15.7)	.063 (1.6)	.360 (9.1)	.320 (8.1)
MNI 5/16-4			.063 (1.6)				
MNI 5/16-6			.093 (2.4)				
MNI 5/16-8			.125 (3.2)				
MNI 5/16-12			.187 (4.7)				
MNI 5/16-16			.250 (6.4)				
MNI 5/16-24	.375 (9.5)						
MNI M3-1.0	-	M3	.039 (1.0)	.280 (7.1)	.039 (1.0)	.150 (3.8)	.122 (3.1)
MNI M3-2.5	-	M3	.098 (2.5)				
MNI M3-3.5	-	M3	.137 (3.5)				
MNI M4-1.3	-	M4	.050 (1.3)	.370 (9.4)	.047 (1.2)	.236 (6.0)	.165 (4.2)

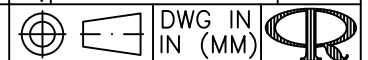


NOTES:

1. MATERIAL: NYLON 6/6 (RMS-48).
2. COLOR: NATURAL, COLOR BLACK AVAILABLE BY SPECIAL ORDER ONLY.

E	REDRAWN TABLE (NO CHANGES)	SM 09.13.02
-	SEE ENGINEERING FOR REVISIONS	-
R E V	DESCRIPTION	ENGR DATE

TITLE: MOLDED NYLON INSULATORS



TOLERANCES UNLESS NOTED .XX=±.010 .XXX=±.005 FRAC=±1/64 ANG=±1'	FILE # MNI	DWN: J.B.	APP:	FINAL	
	MAT'L: SEE NOTES	DT: 11-03-94	DT:	PART #	PRINT TYPE
RE: RICHCO, INC.	RICHCO INC. PO BOX 804238, CHICAGO, 60680 (773) 539-4060		SEE TABLE	CA	