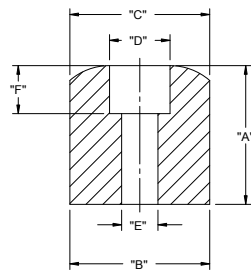
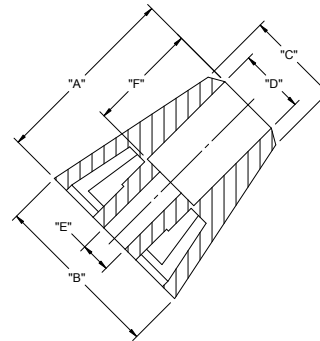




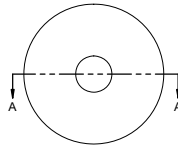
PART NO.	"A"	DIA. "B"	DIA. "C" REF	DIA. "D"	DIA. "E"	"F"	STYLE
SOF-15129	7.1 [28]	15.9 [63]	13.8 [54]	8 [31]	3.2 [13]	4 [16]	1
SOF-15140	9.5 [37]	17.5 [69]	---	8 [31]	4 [16]	5.2 [20]	2
SOF-15125	11.5 [45]	19.1 [75]	18 [71]	10.2 [40]	5 [20]	6.35 [25]	1
SOF-15111	15.25 [60]	19 [75]	12.7 [50]	8 [31]	4 [16]	4.8 [19]	2
SOF-15127	18.35 [72]	18.5 [73]	---	8 [31]	4.8 [19]	6.35 [25]	1
SOF-15126	25 [98]	22.5 [89]	12.7 [50]	8.7 [34]	4 [16]	14.5 [57]	2



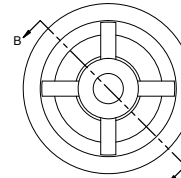
SECTION A-A  
SCALE 2 : 1



SECTION B-B  
SCALE 2 : 1



STYLE 1



STYLE 2

NOTES:  
1. MATERIAL: NEOPRENE RUBBER (RMS-190)  
2. COLOR: BLACK  
3. ALTERNATE UNITS FOR REFERENCE ONLY

REV.	DESCRIPTION	ENGR.	DATE
I	SEE CO 200330 FOR CHANGES	SK	02/20/06
H	SEE ECN #1238 FOR CHANGES	SK	03/18/07
G	SEE ECN #1294 FOR CHANGES	SK	03/07/07
F	SEE ECN #1257 FOR CHANGES	SK	12/05/06
E	REDRAWN, SEE ECN #1225 FOR CHANGES	SK	09/28/06

TITLE: SCREW ON FEET				DWG IN mm [IN]		FINAL		PRINT TYPE	
FILE #:	SOF	DWN:	SK	APP:	SK	PART #		SEE TABLE	
SHEET:	1 OF 1	SHEET SIZE:	B	DT:	08/31/06	CHKD:		D.J.Z.	
RE:	RICHCO, INC.		RICHCO, INC.		ENG@RICHCO-INC.COM		(773) 539-4060		CA