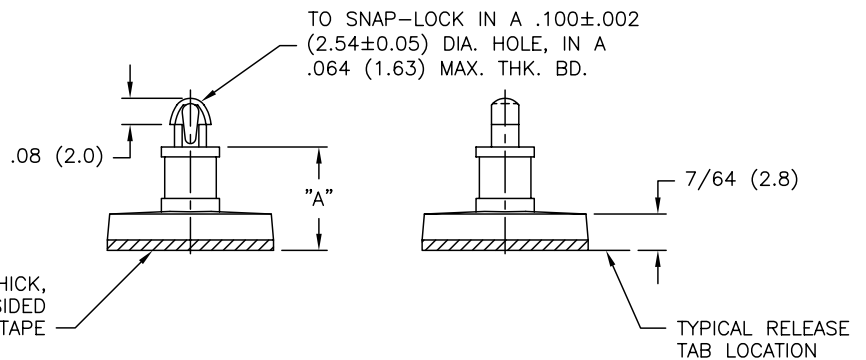


PART NO.	DIM. "A" ±.015 (±0.4)
CBSBT-3-01A-RT	3/16 (4.76)
CBSBT-4-01A-RT	1/4 (6.35)
CBSBT-5-01A-RT	5/16 (7.94)
CBSBT-6-01A-RT	3/8 (9.53)
CBSBT-7-01A-RT	7/16 (11.11)
CBSBT-8-01A-RT	1/2 (12.70)
CBSBT-9-01A-RT	9/16 (14.29)
CBSBT-10-01A-RT	5/8 (15.88)



- NOTES:
- MAT'L: NYLON 6/6 (RMS-01).  
FLAME RETARDANT, NYLON (RMS-19),  
AVAILABLE BY SPECIAL ORDER ONLY.
  - COLOR: NATURAL.
  - ACRYLIC ADHESIVE TAPE (RMS-15), WHITE LINER.  
PART ALSO AVAILABLE WITHOUT TAPE.  
TO ORDER REMOVE "A-RT" FROM PART NO.  
[SUBTRACT 1/32 (0.8) FROM "A" DIM]
  - RUBBER BASED ADHESIVE TAPE (RMS-102),  
AVAILABLE BY SPECIAL ORDER ONLY.  
TO ORDER REPLACE "A-RT" WITH "A1-RT".

REV			TOLERANCES UNLESS NOTED			FILE # CBSBT			DWN: P.B.			APP:			DWG IN IN (MM)			FINAL		
F	SEE ECN #1286 FOR CHANGES	SK 02.13.07																		
E	UPDATED NOTES AND CHANGED FILE NO.	SM 05.08.02																		
D	MAT'L RMS-19 ADDED	J.L. 12.18.97																		
C	"A" IN P/N ADDED; SNAP-LOCK DIM CHANGED	PB 07.13.95																		
B	CONVERTED TO ACAD	PB 02.27.95																		
A	"RT" IN P/N ADDED	RS 01.08.92																		
REV	DESCRIPTION	ENGR DATE																		

TITLE: CIRCUIT BOARD SUPPORT ON BASE, TEARDROP

RE: RICHCO, INC.	RICHCO INC. PO BOX 804238, CHICAGO, 60680 (773) 539-4060	PART # SEE TABLE	PRINT TYPE CA
------------------	--	---------------------	------------------