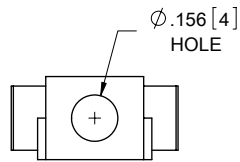
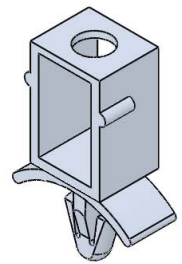
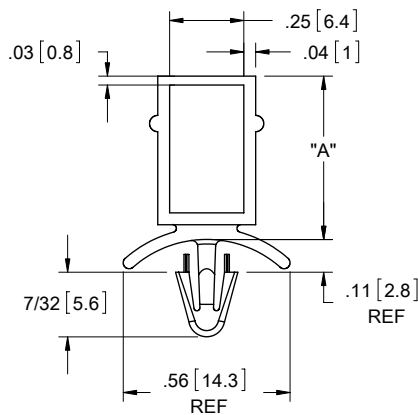


AVAILABLE BY SPECIAL ORDER ONLY






MATERIAL: NYLON 6/6 UL 94 V-2 (RMS-01) COLOR: NATURAL PART NO.	MATERIAL: NYLON 6/6 UL 94 V-0 (RMS-19) COLOR: NATURAL PART NO.	"A" $\pm .015 [0.4]$
CBSS-8-01	CBSS-8-19	.43 [10.9]
CBSS-10-01	CBSS-10-19	.55 [14]
CBSS-12-01	CBSS-12-19	.68 [17.3]
CBSS-14-01	CBSS-14-19	.80 [20.3]



TO SNAP-LOCK IN A $.156 \pm .003$
[4 ± 0.08] DIA. HOLE, IN A
.031-.078 [0.79-1.98] PANEL THICKNESS

NOTES:
1. ALTERNATE UNITS FOR REFERENCE ONLY

NOTE: WHEN USED IN STACKING APPLICATION,
RECOMMENDED MAX. PANEL THICKNESS
BETWEEN CBSS PARTS IS .070 [1.78]

TITLE: CIRCUIT BOARD STACKING SPACERS						DWG IN IN [MM]	
CREATED USING SOLIDWORKS	FILE #: CBSS		DWN: SK	APP: RT		FINAL	
TOLERANCES UNLESS NOTED XX=±.010 XXX=±.005 FRAC.=±1/64 ANG=±1°	SHEET: 1 OF 1	SHEET SIZE: A	DT: 11/29/06	CHKD: DZ		PART #	PRINT TYPE
RE: RICHCO, INC.			RICHCO, INC. ENG@RICHCO-INC.COM (773) 539-4060		SEE TABLE		CA

D	REDRAWN, SEE ECN #1258 FOR CHANGES	SK	12/05/06
-	SEE ENGINEERING FOR REVISIONS A-C	---	---
REV.	DESCRIPTION	ENGR.	DATE