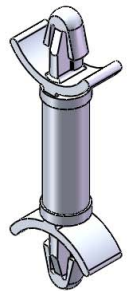


TO SNAP-LOCK IN A .125±.002
 [3.18±0.05] DIA. HOLE, IN A
 .031-.078 [0.79-1.98] PANEL THICKNESS
 (BOTH ENDS)

NOTES:

1. MATERIAL: NYLON 6/6 UL 94 V-0 (RMS-19)
 COLOR: NATURAL.
 AVAILABLE BY SPECIAL ORDER ONLY.
2. ALTERNATE UNITS FOR REFERENCE ONLY.

MATERIAL: NYLON 6/6 UL 94 V-2 (RMS-01) COLOR: NATURAL PART NO.	DIM. "A"±.015 [0.4]
DLCBSM-3-01	3/16 [4.8]
DLCBSM-4-01	1/4 [6.4]
DLCBSM-5-01	5/16 [7.9]
DLCBSM-6-01	3/8 [9.5]
DLCBSM-7-01	7/16 [11.1]
DLCBSM-8-01	1/2 [12.7]
DLCBSM-9-01	9/16 [14.3]
DLCBSM-10-01	5/8 [15.9]



D		REDRAWN, SEE ECN #1208 FOR CHANGES	SK	11/29/06	TITLE: DUAL LOCKING CIRCUIT BOARD SUPPORT, MINI			DWG IN IN [MM]		FINAL		PRINT TYPE	
-		SEE ENGINEERING FOR REVISIONS A-C	---	----	CREATED USING SOLIDWORKS	FILE #: DLCBSM	DWN: SK	APP: RT	PART #		SEE TABLE		CA
REV.		DESCRIPTION	ENGR.	DATE	TOLERANCES UNLESS NOTED .XX±.010 .XXX±.005 FRAC.=±1/64 ANG.=±1°	SHEET: 1 OF 1	SHEET SIZE: A	DT: 11/29/06	CHKD: SJ	RE: RICHCO, INC.		RICHCO, INC. ENG@RICHCO-INC.COM (773) 539-4060	