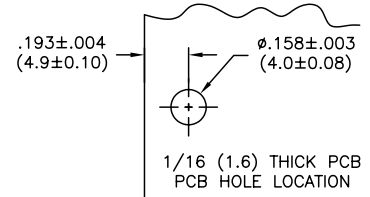
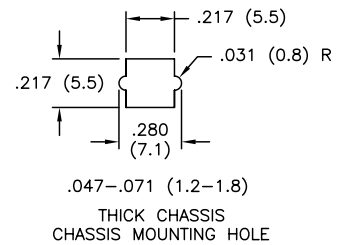
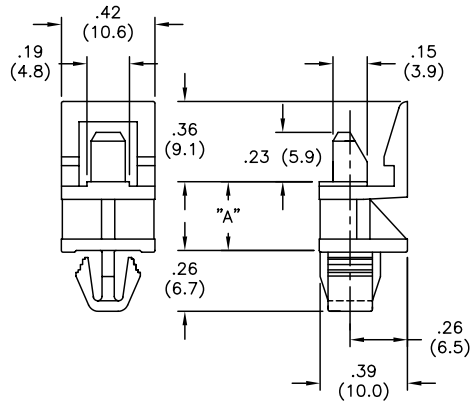


| PART NO.       | "A"         |
|----------------|-------------|
| PCBEHE2-4M-01  | .16 (4.0)   |
| PCBEHE2-6M-01  | .24 (6.0)   |
| PCBEHE2-8M-01  | .32 (8.0)   |
| PCBEHE2-10M-01 | .39 (10.0)  |
| PCBEHE2-12M-01 | .45 (12.0)  |
| PCBEHE2-14M-01 | .55 (14.0)  |
| PCBEHE2-25M-01 | .98 (25.0)  |
| PCBEHE2-30M-01 | 1.18 (30.0) |

AVAILABLE BY SPECIAL ORDER ONLY



NOTES

- MATERIAL: NYLON 6/6 (RMS-01), FLAME RETARDANT NYLON (RMS-19), AVAILABLE BY SPECIAL ORDER ONLY.
- COLOR: NATURAL.

| TITLE: HINGED LOCKING CIRCUIT BOARD SUPPORT |                                    |             | DWG IN IN (MM)  |              | FINAL  | PRINT TYPE |
|---|------------------------------------|-------------|---|--------------|--|------------|
| D   | SEE ECN #862 FOR CHANGES           | SM 10.04.04 | FILE #  | PCBEHE2      |  |            |
| C   | SEE ECN #519 FOR CHANGES           | SM 11.13.02 | MAT'L:  | SEE NOTES    | DT: 08-23-94   | DT:        |
| B   | UPDATED PRINT AND CHANGED FILE NO. | SM 02.07.02 | RE:   | RICHCO, INC. | RICHCO INC.<br>PO BOX 804238, CHICAGO, 60680<br>(773) 539-4060 |            |
| A   | MATERIAL (RMS-19) ADDED            | JL 2.18.00  |   |              | PART #   | SEE TABLE  |
| REV   | DESCRIPTION                        | ENGR DATE   | TOLERANCES UNLESS NOTED<br>XX=±.010<br>.XX=±.005<br>FRAC=1/64<br>ANG=1° |              |  |            |