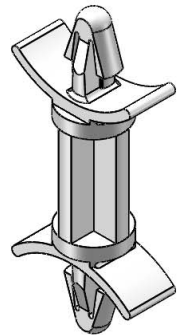


TO SNAP-LOCK IN A .156±.003
 [4±0.08] DIA. HOLE, IN A
 .031-.078 [0.79-1.98] PANEL THICKNESS
 (BOTH ENDS)

NOTES:

- MATERIAL: NYLON 6/6 UL 94 HB (RMS-73)
 COLOR: NATURAL.
 AVAILABLE BY SPECIAL ORDER ONLY.
 TO ORDER USE P/N DLCBS-X-73
- ALTERNATE UNITS FOR REFERENCE ONLY.

MATERIAL: NYLON 6/6 UL 94 V-2 (RMS-01) COLOR: NATURAL PART NO.	MATERIAL: NYLON 6/6 UL 94 V-0 (RMS-19) COLOR: NATURAL PART NO.	DIM. "A"±.015 [0.4]
DLCBS-3-01	DLCBS-3-19	3/16 [4.8]
DLCBS-4-01	DLCBS-4-19	1/4 [6.4]
DLCBS-6-01	DLCBS-6-19	3/8 [9.5]
DLCBS-8-01	DLCBS-8-19	1/2 [12.7]
DLCBS-9-01	DLCBS-9-19	9/16 [14.3]
DLCBS-10-01	DLCBS-10-19	5/8 [15.9]
DLCBS-12-01	DLCBS-12-19	3/4 [19.1]
DLCBS-14-01	DLCBS-14-19	7/8 [22.2]



D		SK	TITLE: DUAL LOCKING CIRCUIT BOARD SUPPORT, TYPE 1		DWG IN IN [MM]		FINAL		PRINT TYPE	
SEE CO 200393 FOR CHANGES		07.23.09	FILE #: DLCBS1	DWN: SK	APP: RT					SEE TABLE CA
REDRAWN, SEE ECN #1208 FOR CHANGES		11/29/06	SHEET: 1 OF 1	DT: 11/22/06	CHKD: SJ					
SEE ENGINEERING FOR REVISIONS A AND B		---	RE: RICHCO, INC.	RICHCO, INC.						
DESCRIPTION		ENGR. DATE		ENG@RICHCO-INC.COM (773) 539-4060						