

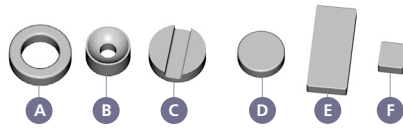
WASH-AWAY SPACERS

Wash-Away Component and General Purpose Spacers

- Ideal for all industry-standard DIP, axial and radial mounted devices
- Properly elevate and protect delicate leads during board handling and assembly
- Spacers wash away in hot or warm running water
- 96 different sizes and elevations



Most DISS-O-PADS® may be ordered in an effervescent version to reduce dissolving time. Add the letter "E" as a suffix, e.g. TO-117-070E. The extra cost is \$3.50/K regardless of quantity.

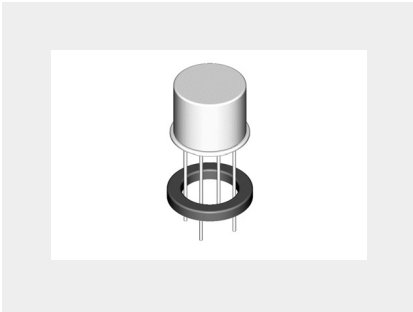


Standard Tolerances: ± .005

To Order:

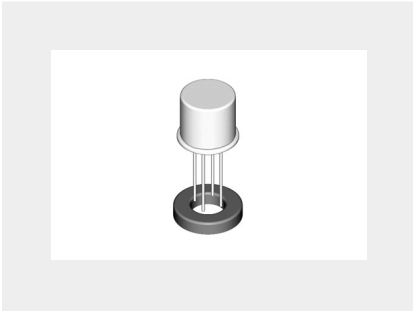
Simply specify PART NUMBER and follow by THICKNESS desired. EXAMPLE: TO-5-070 is the basic, TO-5 part, .070" thick

Note: For higher quantities or special shapes consult factory.



TO-5

Part No.	I.D.	O.D.	Thickness	FIG.	TO-5
TO-5	.225 (5.7)	.375 (9.5)	030, 040, 050, 060, 070, 090, 100, 120, 130, 150	A	Spacer
TO-6	.250 (6.4)	.375 (9.5)	030, 040, 050, 060, 070, 090, 100, 120, 130	A	I.C. Spacer
TO-9	.300 (7.8)	.437 (11.1)	040, 050, 070, 090, 100, 120, 130, 150	A	.300 (7.6) L.S.
TO-13	.225 (5.7)	.310 (7.9)	040, 050, 060, 070, 090, 100, 120, 130	A	Epoxy Case



TO-18

Part No.	I.D.	O.D.	Thickness	FIG.	TO-18
TO-12	.125 (3.2)	.310 (7.9)	080, 090, 100, 120, 130	B	.250 (6.4) L.S.
TO-16	.125 (3.2)	.205 (5.2)	030, 040, 050, 070, 090, 100, 120, 130	A	Epoxy Case
TO-17	.170 (4.3)	.250 (6.4)	030, 040, 050, 070, 090, 100, 120, 130	A	Thin Walls
TO-18	.125 (3.2)	.250 (6.4)	030, 040, 050, 060, 070, 090, 100, 120, 130, 150	A	Standard
TO-20	.125 (3.2)	.290 (7.4)	090, 100, 120, 130, 150	B	.200 (5.1) L.S.
TO-27	.125 (3.2)	.290 (7.4)	030, 040, 050, 070, 090, 100, 120, 130	A	Heavy Walls



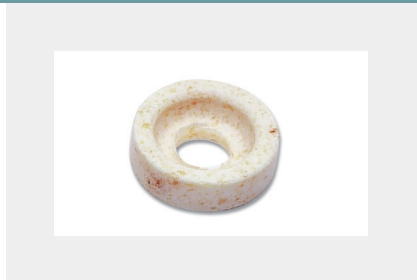
AXIAL

Part No.	I.D.	O.D.	Thickness	Slot Depth	Width	FIG.
TO-21	.125 (3.2)	.250 (6.4)	090, 100, 120, 130, 150	.045 (1.1)	.060 (1.5)	C
TO-35	-	.440 (11.2)	120, 130, 140, 150	.065 (1.7)	.230 (5.8)	C
TO-36	-	.187 (4.7)	060, 070, 080, 090, 100, 130, 150	.040 (1.0)	.080 (2.0)	C
TO-37	-	.156 (4.0)	050, 070, 090, 100, 120	.025 (.64)	.050 (1.3)	C

WASH-AWAY SPACERS

Wash-Away Component and General Purpose Spacers

- Ideal for all industry-standard DIP, axial and radial mounted devices
- Properly elevate and protect delicate leads during board handling and assembly
- Spacers wash away in hot or warm running water
- 96 different sizes and elevations



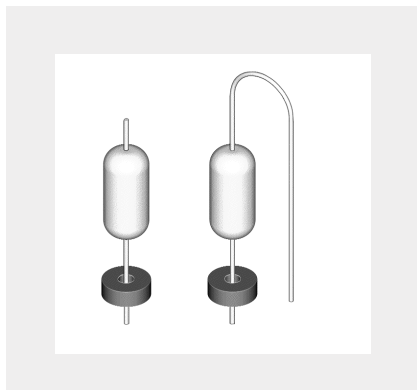
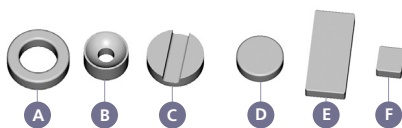
Most DISS-O-PADs® may be ordered in an effervescent version to reduce dissolving time. Add the letter "E" as a suffix, e.g. TO-67-070E. The extra cost is \$3.50/K regardless of quantity.

Standard Tolerances: ± .005

To Order:

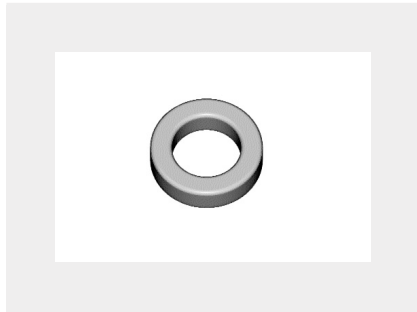
Simply specify PART NUMBER and follow by THICKNESS desired. EXAMPLE: TO-67-070 is the basic, TO-67 part, .070" thick

Note: For higher quantities or special shapes consult factory.



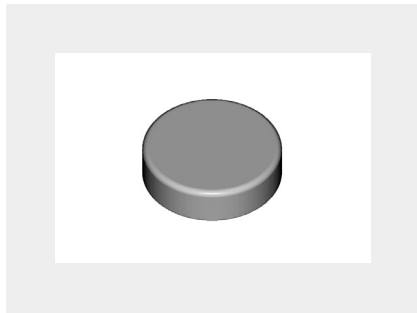
On-End/Cord Wood

Part No.	I.D.	O.D.	Thickness	FIG.
TO-7	.075 (1.9)	.175 (4.4)	030, 050, 060, 070, 090, 100, 120, 130	A
TO-8	.062 (1.6)	.156 (4.0)	030, 050, 060, 070, 090, 100, 120, 130	A
TO-10	.040 (1.0)	.085 (2.2)	030, 040, 050, 060, 070	A
TO-11	.045 (1.1)	.100 (2.5)	030, 040, 050, 060, 070	A
TO-26	.070 (1.8)	.187 (4.7)	030, 040, 050, 060, 070, 090, 100, 120	A
TO-40	.045 (1.1)	.156 (4.0)	030, 050, 060, 070, 090, 100, 120, 130	A
TO-64	.045 (1.1)	.140 (3.6)	030, 050, 060, 070, 090, 100, 120, 130	A
TO-65	.075 (1.9)	.140 (3.6)	030, 050, 060, 070, 090, 100, 120, 130	A
TO-67	.045 (1.1)	.140 (3.6)	050, 060, 070, 090, 100, 120, 130	B
TO-68	.045 (1.1)	.110 (2.8)	040, 050, 060, 070, 090, 100, 120, 130	B



General Purpose

Part No.	I.D.	O.D.	Thickness	FIG.
TO-46	.090 (2.3)	.250 (6.4)	040, 050, 060, 070, 090, 100, 120, 130	A
TO-19	.250 (6.4)	.480 (12.2)	040, 050, 060, 070, 090, 100, 120, 130	A
TO-22	.225 (5.7)	.437 (11.1)	040, 050, 060, 070, 090, 100, 120, 130	A
TO-23	.090 (2.3)	.310 (7.9)	040, 050, 060, 070, 090, 100, 120, 130	A
TO-24	.090 (2.3)	.340 (8.6)	040, 050, 060, 070, 090, 100, 120, 130	A
TO-30	.275 (7.0)	.397 (10.0)	040, 050, 060, 070, 090, 100, 120, 130	A
TO-25	.180 (4.6)	.480 (12.2)	040, 050, 060, 070, 090, 100, 120, 130	A
TO-28	.172 (4.4)	.343 (8.7)	040, 050, 060, 070, 090, 100, 120, 130	A
TO-41	.156 (4.0)	.360 (9.1)	040, 050, 060, 070, 090, 100, 120, 130	A
TO-42	.250 (6.4)	.438 (11.1)	040, 050, 060, 070, 090, 100, 120, 130	A



Solid

Part No.	I.D.	O.D.	Thickness	FIG.
TO-29	-	.156 (4.0)	040, 050, 060, 070, 090, 100, 120, 130	D
TO-31	-	.125 (3.2)	040, 050, 060, 070, 090, 100, 120, 130	D
TO-32	-	.187 (4.7)	040, 050, 060, 070, 090, 100, 120, 130	D
TO-33	-	.250 (6.4)	040, 050, 060, 070, 090, 100, 120, 130	D
TO-34	-	.375 (9.5)	040, 050, 060, 070, 090, 100, 120, 130	D

WASH-AWAY SPACERS

Wash-Away Rectangular and Square Spacers for DIP, Radial and Axial Devices

- Ideal for all industry-standard DIP, axial and radial mounted devices
- Properly elevate and protect delicate leads during board handling and assembly
- Spacers wash away in hot or warm running water
- 96 different sizes and elevations



Most DISS-O-PADs® may be ordered in an effervescent version to reduce dissolving time. Add the letter "E" as a suffix, e.g. TO-117-070E. The extra cost is \$3.50/K regardless of quantity.

To Order:

Simply specify PART NUMBER and follow by THICKNESS desired. EXAMPLE: TO-117-070 is the basic TO-117 part, .070" (1.8) thick.

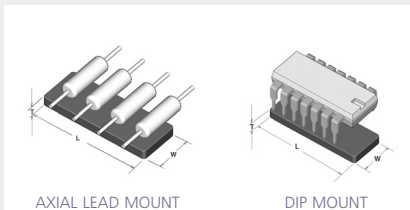
Note:

TO-XXX, 3 digit base part numbers are slightly higher in price than TO-XX, 2 digit base part numbers.

Tolerances: ±.005 (.13)

Thickness Conversion Chart

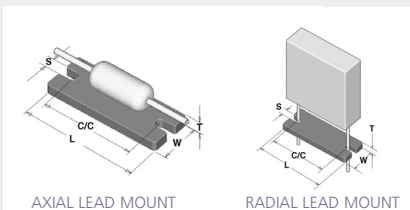
No.	inch	mm	No.	inch	mm
-030	.030	(.76)	-100	.100	(2.5)
-040	.040	(1.0)	-110	.110	(2.8)
-050	.050	(1.3)	-120	.120	(3.0)
-060	.060	(1.5)	-130	.130	(3.3)
-070	.070	(1.8)	-140	.140	(3.6)
-080	.080	(2.0)	-150	.150	(3.8)
-090	.090	(2.3)			



Unslotted Applications

Rectangular and Square Spacers

Part No.	L	W	Thickness	FIG.	
TO-100	.670 (17.0)	.100 (2.5)	040, 050, 060, 070, 090, 100, 120, 130, 150	E	Rectangular
TO-101	.562 (14.3)	.185 (4.7)	040, 050, 060, 070, 090, 100, 120, 130, 150	E	Rectangular
TO-102	.505 (12.8)	.160 (4.1)	040, 050, 060, 070, 090, 100, 120, 130, 150	E	Rectangular
TO-116	.666 (16.9)	.300 (7.6)	040, 050, 060, 070, 090, 100, 120, 130, 150	E	Rectangular
TO-117	.666 (16.9)	.281 (7.1)	040, 050, 060, 070, 090, 100, 120, 130, 150	E	Rectangular
TO-118	.705 (17.9)	.260 (6.6)	040, 050, 060, 070, 090, 100, 120, 130, 150	E	Rectangular
TO-120	.085 (2.2)	.085 (2.2)	040, 050, 060, 070, 090, 100, 120	F	Square
TO-121	.095 (2.4)	.095 (2.4)	040, 050, 060, 070, 090, 100, 120	F	Square



Slotted Applications

Radial and Axial Device Spacers

Part No.	C/C	S	W	L	Thickness
TO-200	.100 (2.5)	.035 (.89)	.095 (2.4)	.190 (4.8)	040, 050, 060, 070, 090, 100, 120, 130, 150
TO-201	.150 (3.8)	.035 (.89)	.095 (2.4)	.240 (6.1)	040, 050, 060, 070, 090, 100, 120, 130, 150
TO-203	.200 (5.1)	.035 (.89)	.095 (2.4)	.290 (7.4)	040, 050, 060, 070, 090, 100, 120, 130, 150
TO-204	.250 (6.4)	.040 (1.0)	.145 (3.7)	.340 (8.6)	040, 050, 060, 070, 090, 100, 120, 130, 150
TO-205	.300 (7.6)	.040 (1.0)	.145 (3.7)	.390 (9.9)	040, 050, 060, 070, 090, 100, 120, 130, 150
TO-206	.400 (10.2)	.045 (1.1)	.195 (5.0)	.490 (12.4)	040, 050, 060, 070, 090, 100, 120, 130, 150
TO-207	.500 (12.7)	.045 (1.1)	.195 (5.0)	.590 (15.0)	040, 050, 060, 070, 090, 100, 120, 130, 150