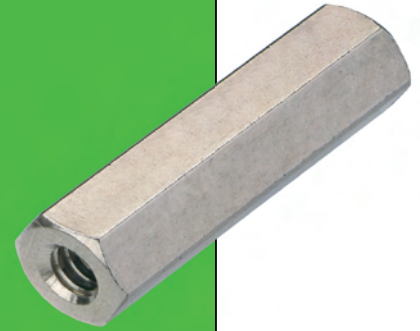


# Metric & Imperial Spacers

## Threaded Female Spacers

- ❖ Special body lengths can be specified, by modifying the order code. For example, R30-100xx02, xx denotes body length in mm.
- ❖ Please contact [technical@harwin.com](mailto:technical@harwin.com) for further information.
- ❖ Brass spacers: base material is free-machining brass, with nickel plating.



### THREADED SPACERS



**R25-100**  
Brass, Hexagonal  
M2.5, 5.0mm A/F



**R30-100**  
Brass, Hexagonal  
M3, 5.0mm A/F



**R30-101**  
Brass, Hexagonal  
M3, 5.5mm A/F



**R30-161**  
Plastic, Hexagonal  
M3, 5.5mm A/F



**R30-500**  
Brass, Circular  
M3, Ø4.76mm O/D



**R40-100**  
Brass, Hexagonal  
M4, 7.0mm A/F



**R44-100**  
Brass, Hexagonal  
4-40 UNC, 5.0mm A/F

### HOW TO ORDER

**RXX - XXX XX XX**

#### SERIES CODE

See pictures above

#### LENGTH (mm)

Length (mm)	Series
04 to 16, 18, 20, 25	Other
06 to 16, 18, 20, 25	R30-161, R40-100
06, 09, 10, 12, 13, 15, 16, 19, 22, 23, 25, 30, 35, 45, 50	R44-100

#### MATERIAL/FINISH

00	Plastic	Ⓟ
02	Brass/Nickel	Ⓟ

All dimensions in mm.

[www.harwin.com](http://www.harwin.com)

