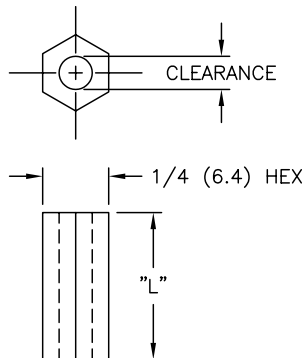


"L" DIM.	CLEARANCE FOR #4 SCREW I.D. = .125 ±.005 PART NO.	CLEARANCE FOR #6 SCREW I.D. = .150 ±.005 PART NO.	CLEARANCE FOR #8 SCREW I.D. = .170 ±.005 PART NO.
1/8 (3.2)	RHS4-2	RHS6-2	RHS8-2
3/16 (4.8)	RHS4-3	RHS6-3	RHS8-3
1/4 (6.4)	RHS4-4	RHS6-4	RHS8-4
5/16 (7.9)	RHS4-5	RHS6-5	RHS8-5
3/8 (9.5)	RHS4-6	RHS6-6	RHS8-6
7/16 (11.1)	RHS4-7	RHS6-7	RHS8-7
1/2 (12.7)	RHS4-8	RHS6-8	RHS8-8
9/16 (14.3)	RHS4-9	RHS6-9	RHS8-9
5/8 (15.9)	RHS4-10	RHS6-10	RHS8-10
11/16 (17.5)	RHS4-11	RHS6-11	RHS8-11
3/4 (19.1)	RHS4-12	RHS6-12	RHS8-12
7/8 (22.2)	RHS4-14	RHS6-14	RHS8-14
1.0 (25.4)	RHS4-16	RHS6-16	RHS8-16

AVAILABLE BY SPECIAL ORDER ONLY



NOTES:

- MAT'L: NYLON 66 (RMS-48), NATURAL
- LENGTH CAN BE OBTAINED IN INCREMENTS OF .010 ON SPECIAL ORDER

E CHANGED FILE NO. AND TITLE BLOCK SM 05.11.01		TITLE: RICHCO HEXAGONAL SPACERS		DWG IN IN (MM) FINAL		PRINT TYPE CA	
D TOL. ±.005 FOR #8 SCREW WAS ±.010 JL 6.15.00		TOLERANCES UNLESS NOTED .XX=±.010 .XXX=±.005 FRAC=1/64 ANG=1°		FILE # RHS		DWN: P.B. APP:	
C I.D FOR #6 SCREW IS .150 & #8 IS .170 J.L 8.27.99		MAT'L: SEE NOTES		DT: 05-13-94 DT:		PART #	
B I.D. .175 ±.010 WAS .170 ±.005 PB 101194		RE: RICHCO, INC.		RICHCO INC. PO BOX 804238, CHICAGO, 60680 (773) 539-4060		SEE TABLE	
A FIRST LINE RHS4-3, RHS6-3, RHS8-3 CHANGED TO -2 PB 071294		ENGR DATE					