



Siemens Matsushita Components

SAW Components
Low Loss Filter for Mobile Communication

B4649
959,50 MHz

Data Sheet

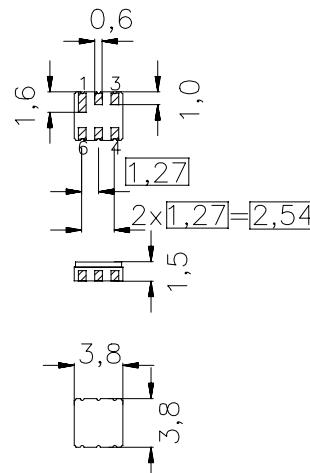
Ceramic package DCC6

Features

- Low loss RF filter for cordless telephone CT1
- High image frequency suppression
- No matching network required for operation at 50 Ω
- Package for **Surface Mounted Technology (SMT)**

Terminals

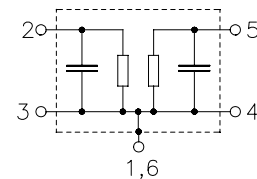
- Ni, gold-plated



Dimensions in mm, approx. weight 0,07 g

Pin configuration

- | | |
|------------|--------|
| 2 | Input |
| 5 | Output |
| 1, 3, 4, 6 | Ground |



Type	Ordering code	Marking and Package according to	Packing according to
B4649	B39961-B4649-Z610	C61157-A7-A41	F61074-V8030-Z000

Electrostatic Sensitive Device (ESD)

Maximum ratings

Operable temperature range	T	0/+ 55	°C	source impedance 50 Ω
Storage temperature range	T_{stg}	- 40/+ 85	°C	
DC voltage	V_{DC}	0	V	
Source power	P_S	10	dBm	

Preliminary format of data sheet.
 Terms of delivery and rights to change design reserved.
 Page 1 of 3

OFW EM CP
 Nov 12, 1997



Siemens Matsushita Components

SAW Components
Low Loss Filter for Mobile Communication

B4649
959,50 MHz

Data Sheet

Characteristics

Operating temperature range: $T = 0\text{ }^{\circ}\text{C}$ to $55\text{ }^{\circ}\text{C}$
Terminating source impedance: $Z_S = 50\ \Omega$
Terminating load impedance: $Z_L = 50\ \Omega$

		min.	typ.	max.	
Center frequency	f_c	-	959,50	-	MHz
Maximum insertion attenuation	α_{\max}	-	2,8	4,0	dB
959,00 ... 960,00 MHz					
Amplitude ripple (p-p)	$\Delta\alpha$	-	0,3	2,0	dB
959,00 ... 960,00 MHz					
Relative attenuation (relative to α_{\max})	α_{rel}				
914,00 ... 937,00 MHz		35,0	45,0	-	dB
980,00 ... 996,00 MHz		10,0	50,0	-	dB
996,00 ... 1003,00 MHz		35,0	50,0	-	dB
Temperature coefficient of frequency	TC_f	-	-30	-	ppm/K



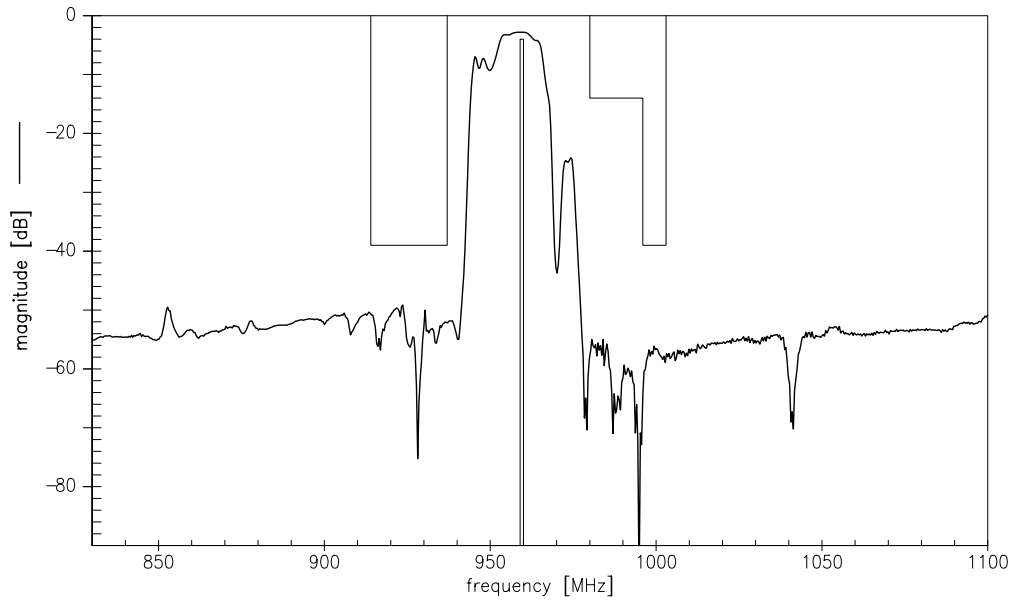
Siemens Matsushita Components

SAW Components Low Loss Filter for Mobile Communication

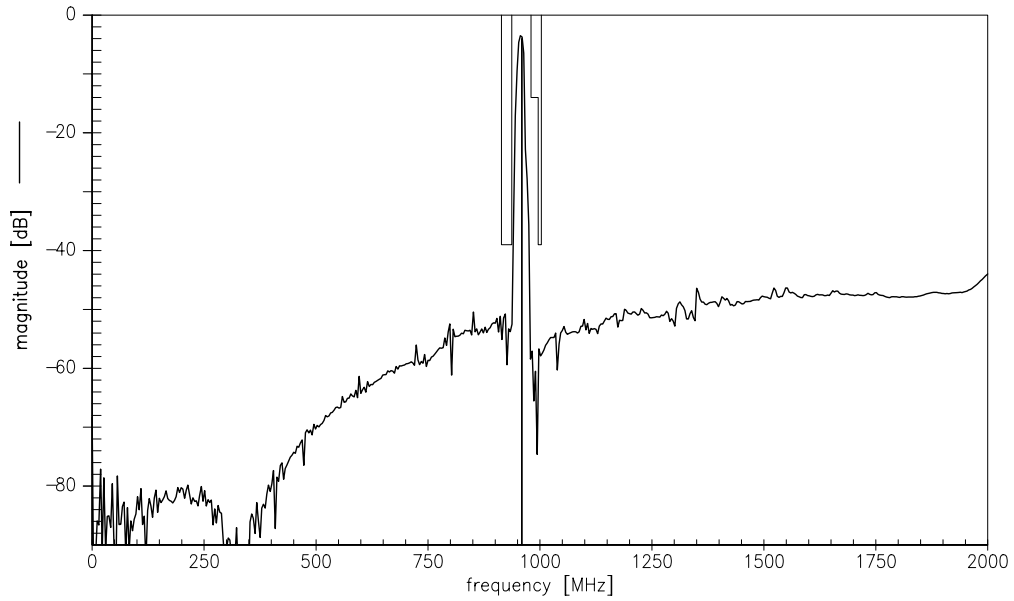
B4649
959,50 MHz

Data Sheet

Transfer function



Transfer function (wideband)



Preliminary format of data sheet.
Terms of delivery and rights to change design reserved.
Page 3 of 3

OFW EM CP
Nov 12, 1997