



- ▶ Quartz Stability
- ▶ Ideal for Satellite Receiver
- ▶ RoHS Compliant



ECS-D480A

SAW FILTER

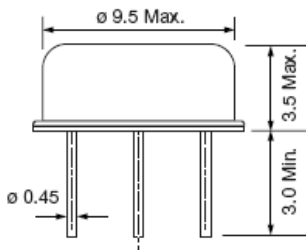
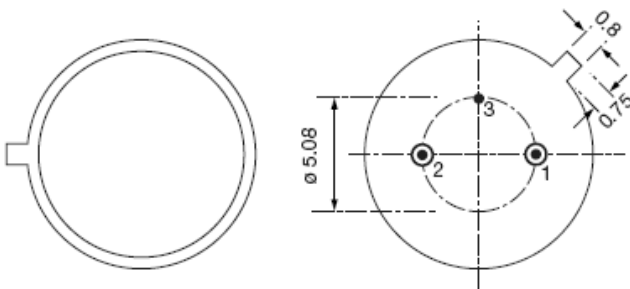
The ECS-D480A is a 480 MHz SAW (Surface Acoustic Wave) Filter in a thru-hole TO39-3A package. They are ideal for Satellite TV.



OPERATING CONDITIONS / ELECTRICAL CHARACTERISTICS

PARAMETERS	CONDITIONS	ECS-D480A			UNITS
		MIN	TYP	MAX	
CENTER FREQUENCY		479.0	480.0	481.0	MHz
INSERTION LOSS	@ FO		19.5	21	dB
3 dB PASS BAND		16.6	17.6	18.6	MHz
RELATIVE ATTENUATION	@ 471.0 MHz		3.4	5.4	dB
	@ 489.0 MHz		3.0	5.4	dB
	430 ~ 461 MHz	38.0	50.0		dB
	499 ~ 530 MHz	38.0	45.0		dB
AMPLITUDE RIPPLE	476.0 ~ 484.0 MHz		0.3	0.6	dB
GROUP DELAY	480.0 MHz		281.0		nS
GROUP DELAY RIPPLE	471.5 ~ 488.5 MHz		11.5	18.0	nS
FREQUENCY STABILITY	-25°C ~ +85°C		-86		PPM/°C
TERMINATING IMPEDANCE	INPUT	70Ω//3.7pF			
	OUTPUT	280Ω//2.5pF			
OPERATING TEMPERATURE		-25		+85	°C
STORAGE TEMPERATURE		-40		+85	°C

PACKAGE DIMENSIONS (mm)



PIN CONNECTIONS	
1	INPUT
2	OUTPUT
3	GROUND

PART NUMBER: ECS - D480A