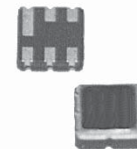


SMD 418.0MHz SAW FILTER

AFS418S3

APPLICATION: Automotive Electronics/Remote Control



3.8 x 3.8 x 1.5mm

STANDARD SPECIFICATIONS:

| CHARACTERISTICS | UNIT | MIN. | TYP. | MAX. |
|---------------------------|------|----------------|----------|------|
| Center Frequency Fc | MHz | - | 418 | - |
| Bandwidth | MHz | - | Fc + 2.0 | - |
| Insertion Loss @ Passband | dB | - | - | 4.5 |
| Ripple @ Passband | dB | - | - | 2 |
| Relative Attenuation | | | | |
| Fc-100 ~ Fc-40.8 MHz | dB | 55 | | - |
| Fc+40.8 ~ Fc+100 MHz | dB | 55 | | - |
| DC Voltage | V | 10 | | |
| Source Power | dBm | 0 | | |
| Operating Temperature | °C | -10°C to +50°C | | |
| Storage Temperature | °C | -45°C to +85°C | | |
| Terminating Impedance | - | 150Ω/0 pF | | |

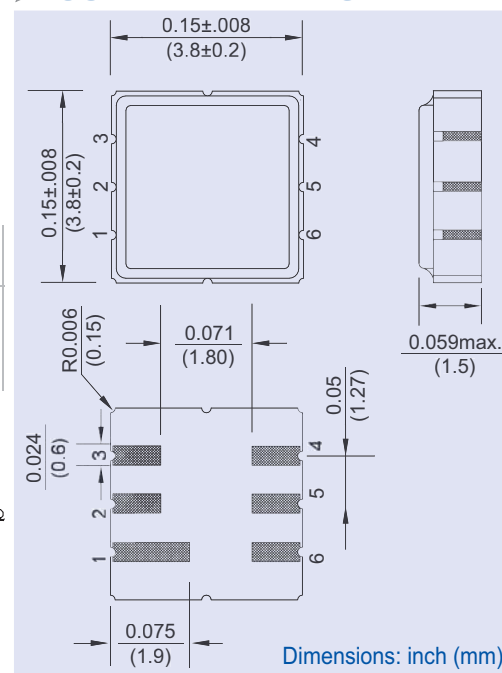
Electrostatic Sensitive Device. Handle with precaution.

MARKING:

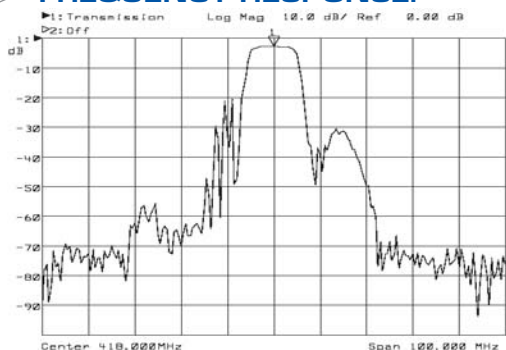
- 418.00 (418.0 Frequency in MHz)
- AF ZYX (ZY: Date code Z for month from A to L; Y for year, i.e. 4 for 2004
X: Traceability code)

| PIN NO. | CONNECTIONS |
|------------|-------------|
| 2 | Input |
| 5 | Output |
| All Others | Ground |

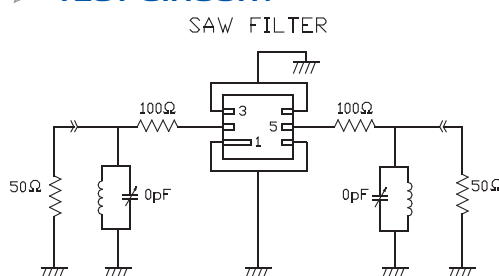
OUTLINE DRAWING:



FREQUENCY RESPONSE:



TEST CIRCUIT:



Please refer to ABRACON's Chip Inductor Series AISC-0603 for Test Inductors