



# SAW Components

Data Sheet B3583





SAW Components

B3583

Low Loss Filter

345,00 MHz

Data Sheet

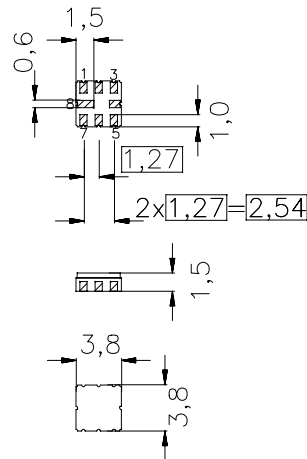
**Features**

- RF low-loss filter for remote control receivers
- Package for **Surface Mounted Technology (SMT)**
- Hermetically sealed ceramic package
- No matching network required for operation at 50 Ω

**Terminals**

- Ni, gold plated

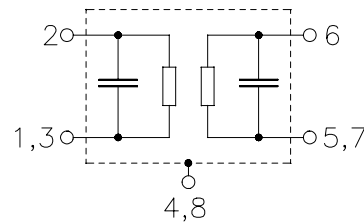
Ceramic package QCC8B



Dimensions in mm, approx. weight 0,07

**Pin configuration**

- 2 Input
- 1,3 Input Ground
- 6 Output
- 5,7 Output Ground
- 4,8 to be grounded



Type	Ordering code	Marking and Package according to	Packing according to
B3583	B39351-B3583-Z810	C61157-A7-A56	F61074-V8070-Z000

Electrostatic Sensitive Device (ESD)

**Maximum ratings**

Operable temperature range	$T_A$	-20/+85	°C	
Storage temperature range	$T_{stg}$	-45/+90	°C	
DC voltage	$V_{DC}$	0	V	
Source power	$P_S$	0	dBm	source impedance 50 Ω



SAW Components

B3583

Low Loss Filter

345,00 MHz

Data Sheet

**Characteristics**

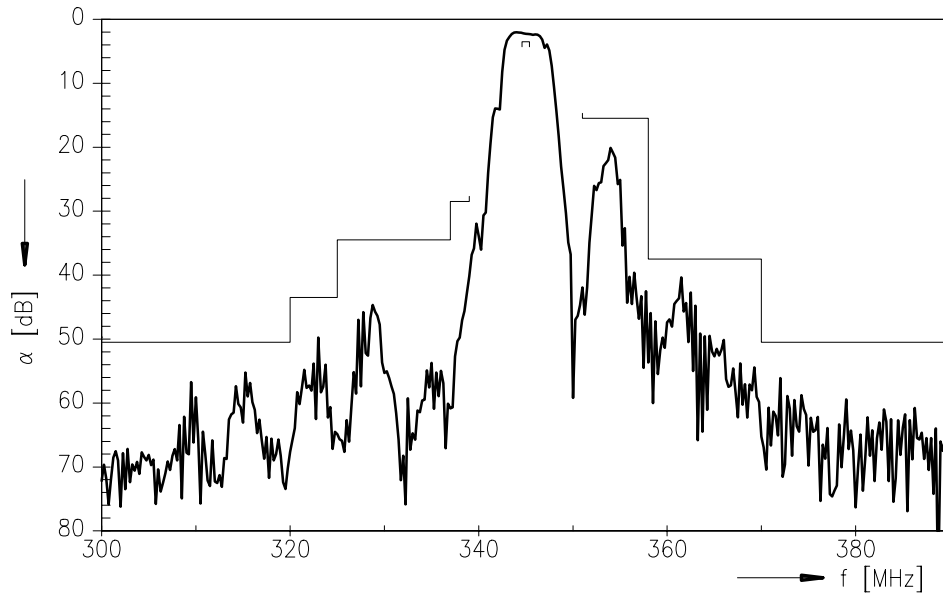
Reference temperature:  $T_A = 25\text{ °C}$   
 Terminating source impedance:  $Z_S = 50\ \Omega$   
 Terminating load impedance:  $Z_L = 50\ \Omega$

		min.	typ.	max.	
<b>Center frequency</b>	$f_c$	—	345,00	—	MHz
<b>Maximum insertion attenuation</b>					
	344,60 ... 345,40 MHz $\alpha_{max}$	—	2,5	3,5	dB
<b>Amplitude ripple (p-p)</b>					
	344,60 ... 345,40 MHz $\Delta\alpha$	—	0,5	1,5	dB
<b>Relative attenuation (relative to <math>\alpha_{max}</math>)</b>					
	10,00 ... 320,00 MHz $\alpha_{rel}$	48	53	—	dB
	320,00 ... 325,00 MHz	41	47	—	dB
	325,00 ... 337,00 MHz	32	39	—	dB
	337,00 ... 339,00 MHz	26	31	—	dB
	351,00 ... 358,00 MHz	13	16	—	dB
	358,00 ... 370,00 MHz	35	39	—	dB
	370,00 ... 700,00 MHz	47	52	—	dB
	700,00 ... 1000,00 MHz	40	45	—	dB
<b>Temperature coefficient of frequency</b>	$TC_f$	—	-30	—	ppm/K

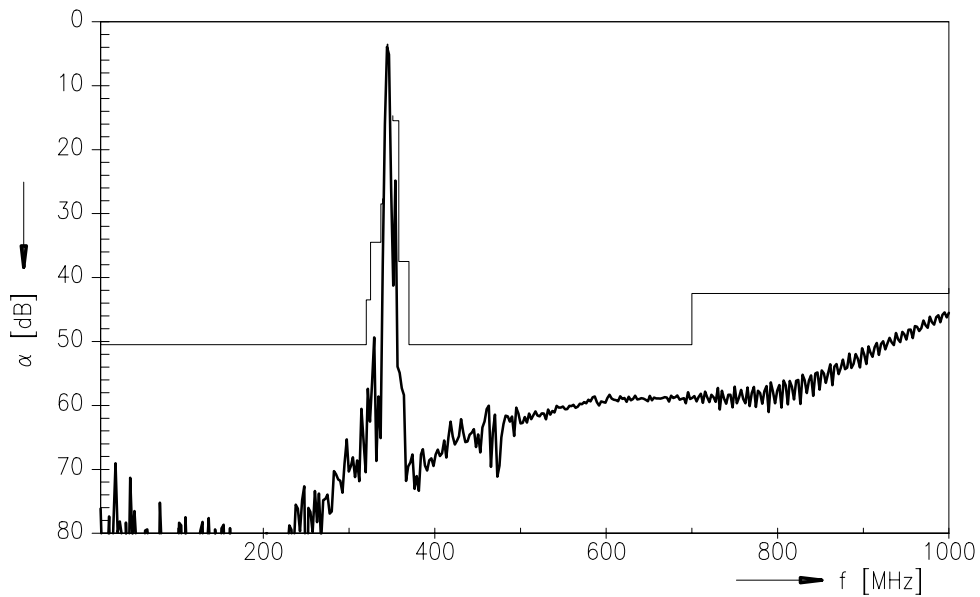


Data Sheet

Transfer function



Transfer function (wideband)





**SAW Components**

**B3583**

**Low Loss Filter**

**345,00 MHz**

Data Sheet

**Published by EPCOS AG**

**Surface Acoustic Wave Components Division, SAW CE AE PD**

**P.O. Box 80 17 09, D-81617 München**

© EPCOS AG 2001. All Rights Reserved.

As far as patents or other rights of third parties are concerned, liability is only assumed for components per se, not for applications, processes and circuits implemented within components or assemblies.

The information describes the type of component and shall not be considered as assured characteristics.

Terms of delivery and rights to change design reserved.

For questions on technology, prices and delivery please contact the sales offices of EPCOS AG or the international representatives.

Due to technical requirements components may contain dangerous substances. For information on the type in question please also contact one of our sales offices.