

# PRELIMINARY

## 1.90 GHz Band Pass Filter

**P/N 1906BP39B027**

Detail Specification: 06/05/07

Page 1 of 2

### General Specifications

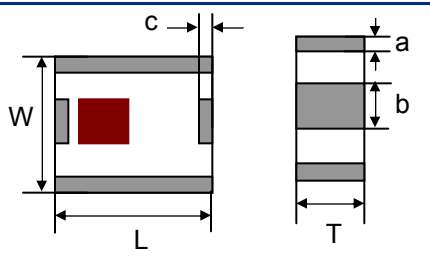
<b>Part Number</b>	1906BP39B027	
<b>Frequency (MHz)</b>	1893 - 1920	
<b>Insertion Loss</b>	2.8 dB max.	
<b>Return Loss</b>	9.5 dB min.	
<b>Attenuation (min.)</b>	1660 MHz	40 dB
<b>Attenuation (min.)</b>	2139 MHz	12 dB

<b>Input Power</b>	500 mW max.
<b>Impedance</b>	50 $\Omega$
<b>Operating Temperature</b>	-40 to +85°C
<b>Storage Temperature</b>	-40 to +85°C
<b>Reel Quantity</b>	3,000
<b>MSL</b>	2 *

\* - 1 yr shelf life in bag; 1 week shelf life out of bag;  
Vacuum reseal unused reel

### Mechanical Dimensions

	In	mm
<b>L</b>	0.098 $\pm$ 0.008	2.50 $\pm$ 0.20
<b>W</b>	0.079 $\pm$ 0.008	2.00 $\pm$ 0.20
<b>T</b>	0.043 $\pm$ 0.004	1.10 $\pm$ 0.10
<b>a</b>	0.012 $\pm$ 0.008	0.30 $\pm$ 0.20
<b>b</b>	0.024 $\pm$ 0.008	0.60 $\pm$ 0.20
<b>c</b>	0.012 $\pm$ 0.008	0.30 $\pm$ 0.20



### Terminal Configuration

No.	Function
1	GND
2	OUT
3	GND
4	IN

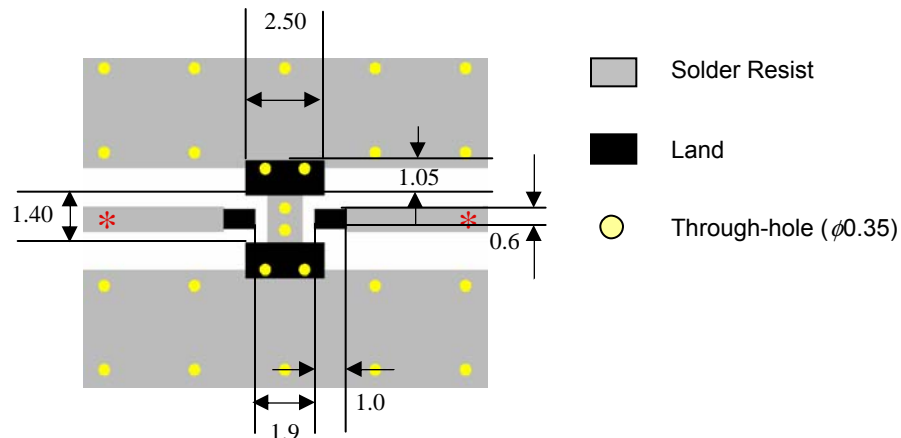
The diagram shows a square component with terminals 1 (top), 2 (right), 3 (bottom), and 4 (left). A red square is centered on the top surface.

### Mounting Considerations

Mount these devices with brown mark facing up.

\* Line width should be designed to provide 50  $\Omega$  impedance matching characteristics.

Units: mm



Johanson Technology, Inc. reserves the right to make design changes without notice.

All sales are subject to Johanson Technology, Inc. terms and conditions.



[www.johansontechnology.com](http://www.johansontechnology.com)

4001 Calle Tecate • Camarillo, CA 93012 • TEL 805.389.1166 FAX 805.389.1821

2003 Johanson Technology, Inc. All Rights Reserved

# PRELIMINARY

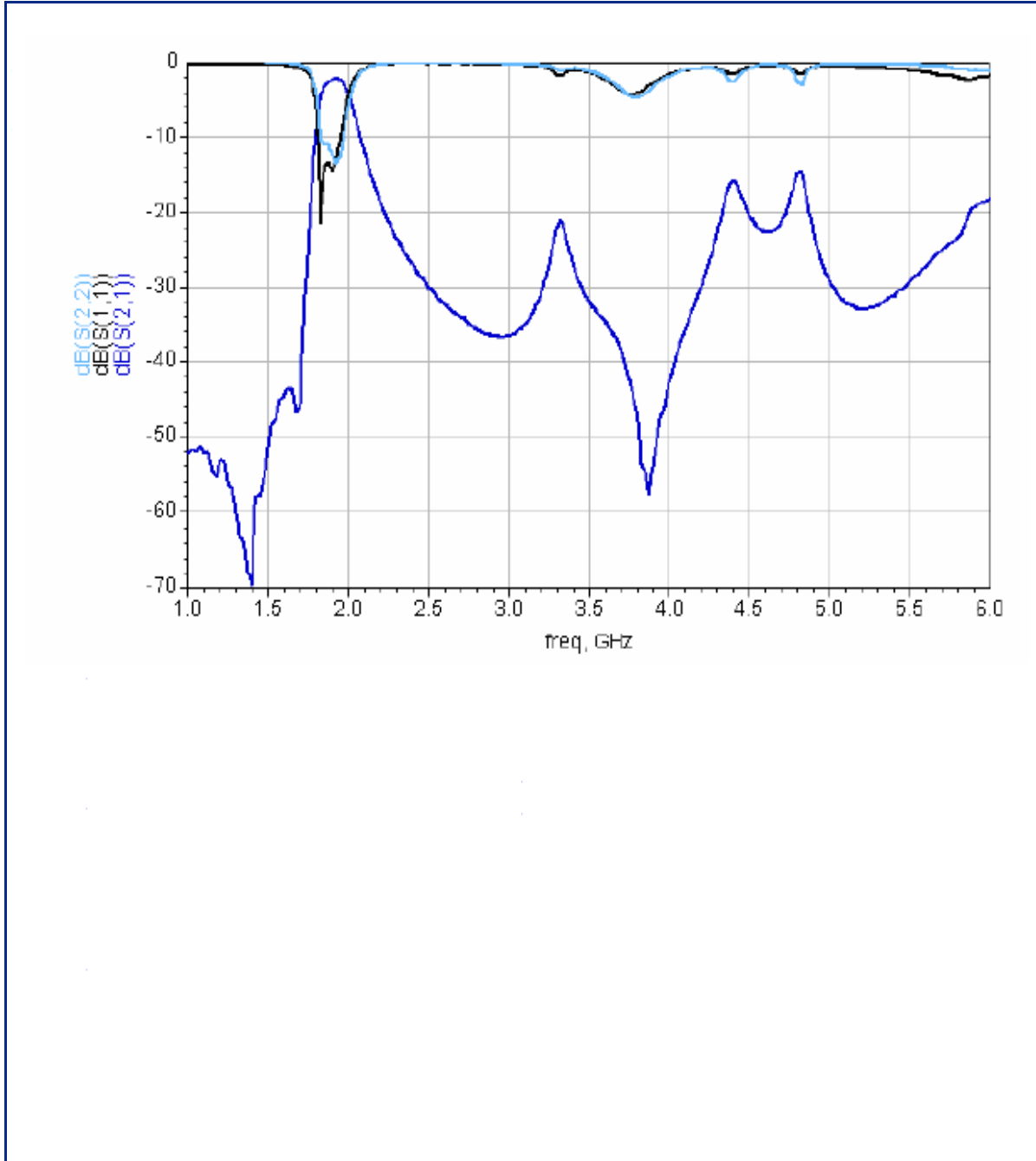
## 1.90 GHz Band Pass Filter

P/N 1906BP39B027

Detail Specification: 06/05/07

Page 2 of 2

### Typical Electrical Performance (T=25°C)



Johanson Technology, Inc. reserves the right to make design changes without notice.

All sales are subject to Johanson Technology, Inc. terms and conditions.



[www.johansontechnology.com](http://www.johansontechnology.com)

4001 Calle Tecate • Camarillo, CA 93012 • TEL 805.389.1166 FAX 805.389.1821

2003 Johanson Technology, Inc. All Rights Reserved