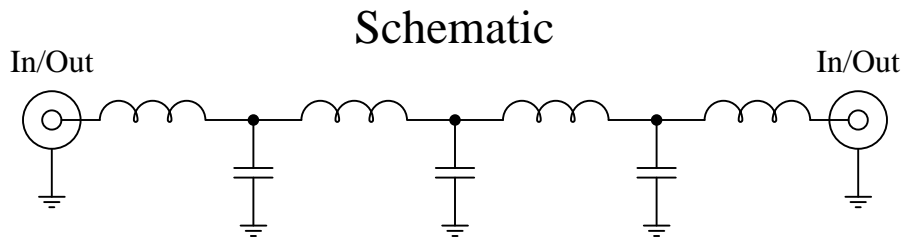


Part Number: CLPFL-0500

Low Pass Range
DC to 500MHz

New
Low Pass Filters



Features:

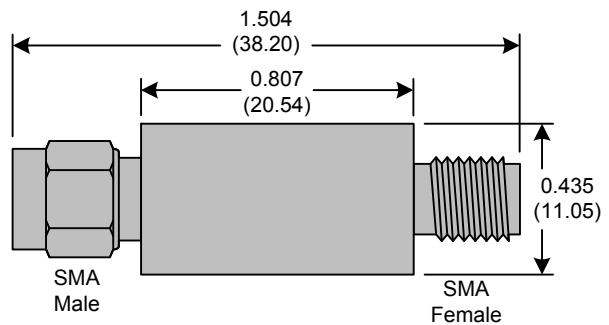
- 7th Order Butterworth Response
- 50Ω SMA Connectors

Applications:

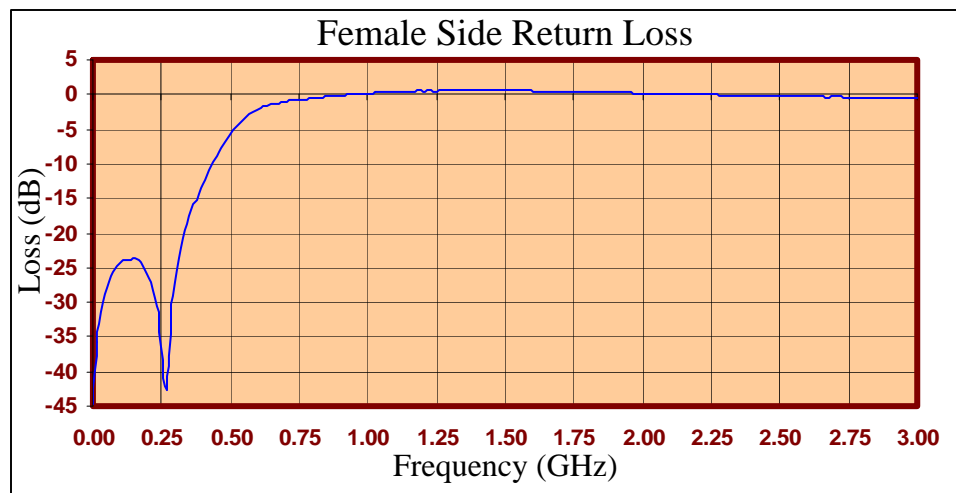
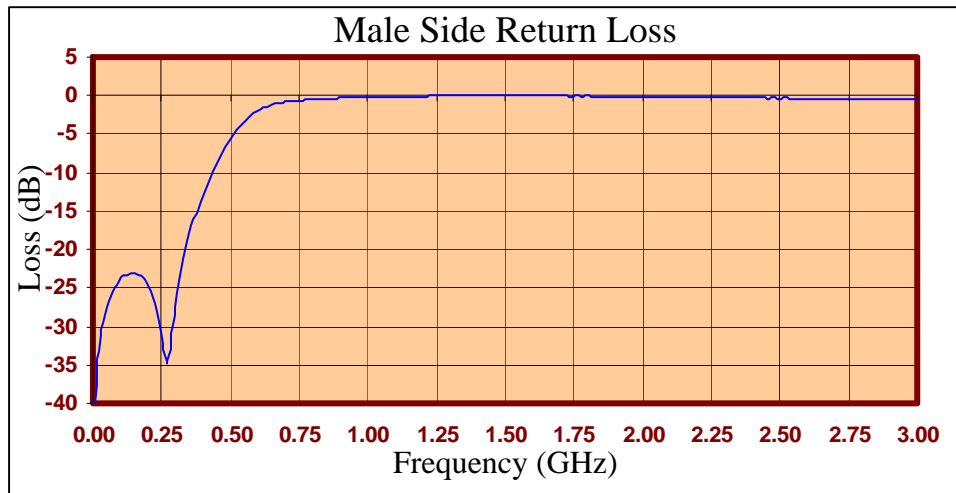
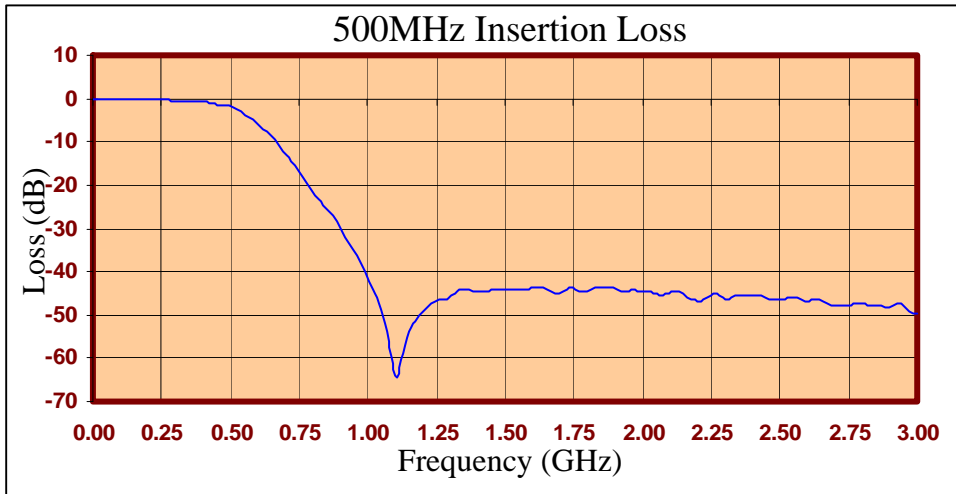
- Test Equipment
- Lab Use

Maximum Ratings:

- +36dBm (4 Watts)
- Operating Temperature: -40°C to 85°C
- Storage Temperature: -55°C to 100°C



Crystek's new line of Low Pass Filters are designed in a rugged SMA housing. This filter line has excellent out-of-band rejection. Designed for Test Equipment and General Lab Use.





| FREQ (MHz) | INSERTION LOSS (dB) | Male Return Loss (dB) | Female Return Loss (dB) |
|------------|---------------------|-----------------------|-------------------------|
| 0.3 | -0.06 | -44.53 | -44.82 |
| 15.3 | -0.06 | -35.82 | -35.86 |
| 30.3 | -0.12 | -31.25 | -31.36 |
| 45.3 | -0.14 | -28.60 | -28.69 |
| 60.3 | -0.16 | -26.74 | -26.94 |
| 75.3 | -0.21 | -25.42 | -25.72 |
| 90.3 | -0.20 | -24.58 | -24.73 |
| 105 | -0.24 | -23.74 | -24.19 |
| 120 | -0.24 | -23.42 | -23.86 |
| 135 | -0.27 | -23.05 | -23.76 |
| 150 | -0.30 | -23.17 | -23.68 |
| 165 | -0.29 | -23.29 | -24.02 |
| 180 | -0.31 | -23.70 | -24.72 |
| 195 | -0.35 | -24.48 | -25.81 |
| 210 | -0.30 | -24.45 | -27.07 |
| 225 | -0.37 | -27.06 | -29.31 |
| 240 | -0.33 | -29.25 | -32.68 |
| 255 | -0.37 | -27.06 | -40.16 |
| 270 | -0.40 | -34.88 | -42.38 |
| 285 | -0.41 | -32.00 | -31.85 |
| 300 | -0.44 | -27.61 | -27.03 |
| 330 | -0.47 | -21.36 | -20.74 |
| 405 | -0.90 | -12.34 | -12.25 |
| 450 | -1.59 | -8.74 | -8.73 |
| 510 | -2.27 | -5.14 | -5.17 |
| 585 | -6.09 | -2.36 | -2.47 |
| 705 | -15.09 | -0.83 | -1.03 |
| 810 | -24.16 | -0.51 | -0.51 |
| 900 | -32.22 | -0.33 | -0.16 |
| 1005 | -44.82 | -0.23 | 0.00 |
| 1245 | -46.09 | -0.06 | 0.00 |
| 1500 | -44.09 | -0.03 | 0.00 |
| 1755 | -43.83 | -0.07 | 0.00 |
| 1995 | -44.15 | -0.11 | 0.00 |
| 2250 | -45.13 | -0.23 | -0.05 |
| 2505 | -46.30 | -0.33 | -0.25 |
| 2745 | -47.77 | -0.46 | -0.37 |
| 3000 | -49.50 | -0.58 | -0.51 |

Product Control:

| | | | |
|----------------------|------------|---------------|---------------|
| Crystek Part Number: | CLPFL-0500 | Release Date: | 30-Mar-10 |
| Revision Level: | A | Responsible: | K. Piotrowicz |

