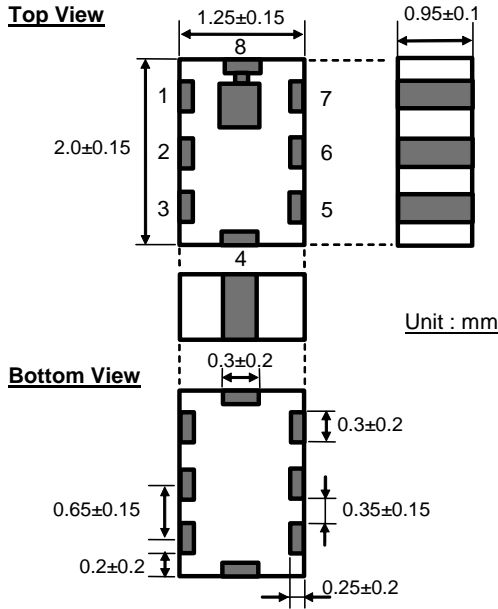


Multilayer Band Pass Filter (Balance output type)
P/N : DEA202450BT-7077A1
For Bluetooth, W-LAN

MECHANICAL DIMENSIONS



PIN CONFIGURATION

PIN ASSIGNMENT	PIN No.
Unbalanced port	1
Balanced port	5
Balanced port	7
GND	4,6,8
DC feed + RF GND or GND	2
NC	3

PRELIMINARY ELECTRICAL CHARACTERISTICS

At 25degreeC

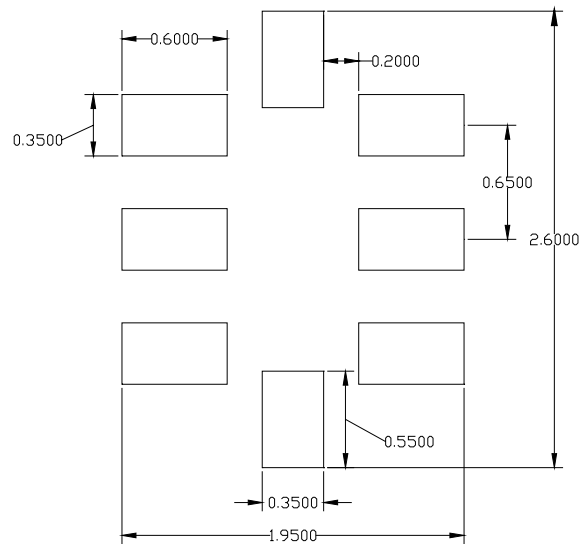
Parameter	Specification	Typical Value	Unit
Frequency Range (Pass Band)	2400 – 2500	-	MHz
Insertion Loss	+25 degree C	3.5 max.	2.9
	-40 ~ +85 degree C	3.8 max.	-
Single ended port characteristic impedance	50 (Nominal)	-	ohm
Balanced port differential characteristics Impedance	34+j72 (Nominal)	-	ohm
Attenuation	880 - 960MHz	40 min.	-
	1710 - 1880MHz	38 min.	-
	1880 - 1990MHz	38 min.	-
	2110 - 2170MHz	17 min.	-
	4800 - 5000MHz	25 min.	-
	7200 - 7500MHz	27 min.	-
	MHz	min.	-
	MHz	min.	-

Single ended Return Loss	2400 – 2500 MHz	9.0 max.	-	dB
Balanced Return Loss	2400 – 2500 MHz	9.0 max.	-	dB
Phase Difference at Balanced Port		180 +/- 10	-	deg.
Amplitude Imbalance at Balanced Port		0 +/- 1.0	-	dB

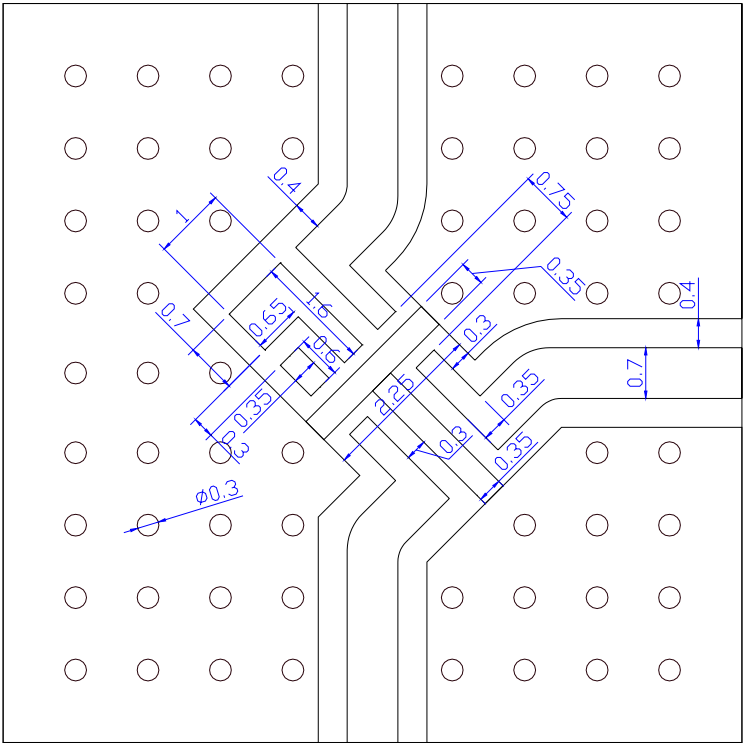
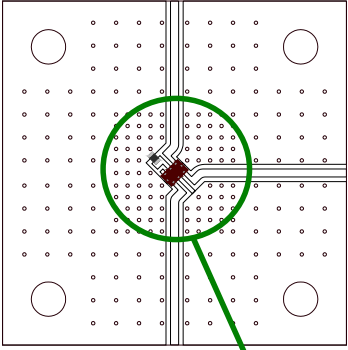
TEMPERATURE RANGE

Storage Temperature : -40 ~ +85 degree C
 Operating Temperature : -40 ~ +85 degree C

Recommended Land Pattern



Evaluation Board



* Line width and gap should be designed to match 50ohm characteristic impedance.
It depends on PCB material and thickness.