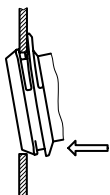


Technical Data of Filter-Components

Rated Current [A]	Filter-Type	Inductances L [mH]	Capacitance CX [nF]	Capacitance CY [nF]	R [MΩ]
0.5	Standard Version	2 x 24	100	2.2	-
1	Standard Version	2 x 12	100	2.2	-
3	Standard Version	2 x 2.5	100	2.2	-
6	Standard Version	2 x 0.78	100	2.2	-
10	Standard Version	2 x 0.225	100	2.2	-
15	Standard Version	2 x 0.075	100	2.2	-
0.5	Medical Version (M5)	2 x 24	100	-	1
1	Medical Version (M5)	2 x 12	100	-	1
3	Medical Version (M5)	2 x 2.5	100	-	1
6	Medical Version (M5)	2 x 0.78	100	-	1
10	Medical Version (M5)	2 x 0.225	100	-	1
15	Medical Version (M5)	2 x 0.075	100	-	1

Dimensions

Step 1



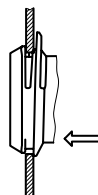
Place the socket in top edge of the panel cut-out.

Step 2



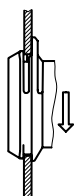
Push the socket upwards.

Step 3



Push the socket forward into the panel cut-out.

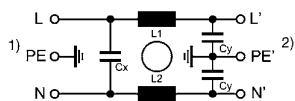
Step 4



Release the socket. The component is self adjusting.

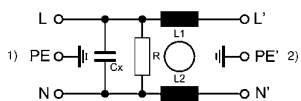
Diagrams

Standard version



1) Line
2) Load

Medical version

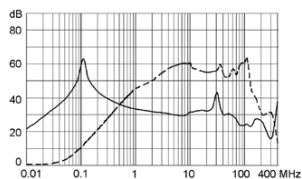


1) Line
2) Load

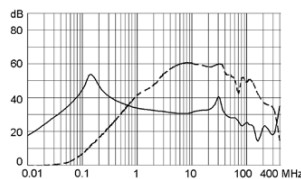
Attenuation Loss 0.1/100Ω differential mode 100/0.1Ω differential mode - - - - differential mode ____ common mode

Standard version

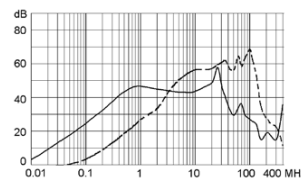
0.5 A



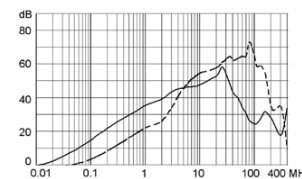
1 A



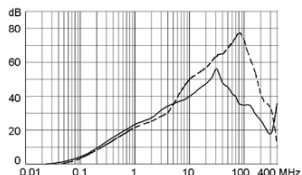
3 A



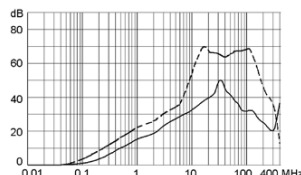
6 A



10 A

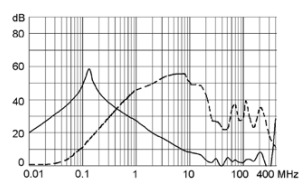


15 A

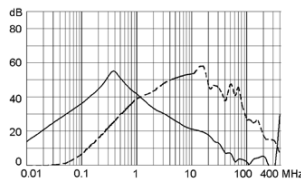


Medical version (M5)

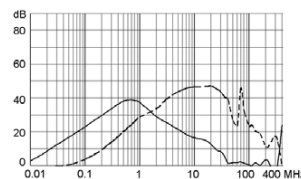
0.5 A



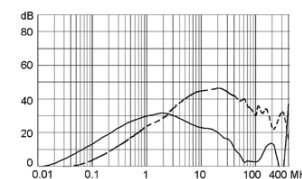
1 A



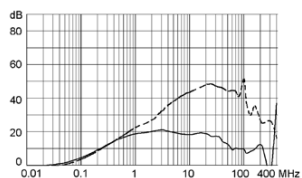
3 A



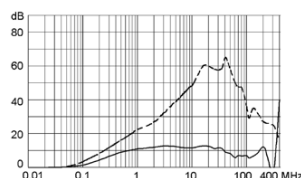
6 A



10 A



15 A



Variants

Rated Current IEC [A]	Rated Current UL [A]	Filter-Type	Panel Thickness s [mm]	Order Number
0.5	0.5	Standard Version	1	GRF4.0411.011.C
1	1	Standard Version	1	GRF4.0412.011.C
6	6	Standard Version	1	GRF4.0416.011.C
10	10	Standard Version	1	GRF4.0417.011.C
0.5	0.5	Standard Version	1.5	GRF4.0411.013.C
1	1	Standard Version	1.5	GRF4.0412.013.C
3	3	Standard Version	1.5	GRF4.0413.013.C
6	6	Standard Version	1.5	GRF4.0416.013.C
10	10	Standard Version	1.5	GRF4.0417.013.C
15	15	Standard Version	1.5	GRF4.0419.013.C
3	3	Standard Version	2	GRF4.0413.014.C
0.5	0.5	Medical Version (M5)	1.5	GRF4.0021.013.C
1	1	Medical Version (M5)	1.5	GRF4.0022.013.C
3	3	Medical Version (M5)	1.5	GRF4.0023.013.C
6	6	Medical Version (M5)	1.5	GRF4.0026.013.C
10	10	Medical Version (M5)	1.5	GRF4.0027.013.C
15	15	Medical Version (M5)	1.5	GRF4.0029.013.C

Articles with packing unit 200 (without ending ".C") are no longer available

Packaging unit 20 Pcs

Mating Outlets/Connectors

Category / Description

Appliance Outlet Overview complete



IEC Appliance Outlet F, Screw-on Mounting, Front Side, Solder Terminal	4787
IEC Appliance Outlet F, Snap-in Mounting, Front Side, Solder or Quick-connect Terminal	4788
IEC Appliance Outlet F or H, Screw-on Mounting, Front Side, Solder, PCB or Quick-connect Terminal	5091
IEC Appliance Outlet F or H, Screw-on Mounting, Front Side, Solder or Quick-connect Terminal	5092

Appliance Outlet further types to GRF4

Connector Overview complete



IEC Connector C15, Rewireable, Straight	0101
IEC Connector C15A, Rewireable, Straight	0102
IEC Connector C15A, Rewireable, Straight	0102-G
IEC Connector C15A, Rewireable, Angled	0112
IEC Connector C13, Rewireable, Angled	4012

Connector further types to GRF4

...

Power Cord Overview complete



Power Cord with IEC Connector C13, Angled	0311
Power Cord with IEC Connector C13, Angled	3011
Power Cord with IEC Connector C13, Angled	3012
Power Cord with IEC Connector C13, Angled	3013
Power Cord with IEC Connector C13	3020

Power Cord further types to GRF4

...