



### Features:

- RFI Filter Module Combines IEC Connector, Fusing, Optional Voltage Select and On/Off Switch into a Single, Space-Efficient Assembly
- Enhanced Low Frequency Response with No Resonant Peaks
- Fully Shielded for Radiative Noise Control
- Accepts Either U.S. or European Standard Fuse Sizes. Dual or Single Power Line Fusing
- Meets IEC 60601 Standard and Meets UL 544 Specification for Medical and Dental Applications

### Specifications:

**Rated Voltage:** 250VAC Maximum - 50/60 Hz

**Rated Current:** 115VAC 250VAC  
10A 10A

**Current Overload:** 6X for 8 seconds

#### Hi-Pot Test (1 min):

Line to Ground 1500VAC  
Line to Line 2250VDC

**Insulation Resistance:**  $9 \times 10^9 \Omega$  at 100VDC

**Ambient Temperature:** 40°C Max at rated current

**Humidity Range:** 0% to 95% R.H.

#### Termination:

- QC – Quick Connect
- IEC Receptacle

#### Maximum Leakage Current:

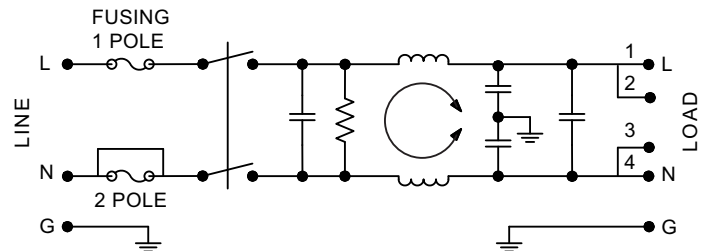
| Each Line to Ground | PM1     | PM1-PO  |
|---------------------|---------|---------|
| 115VAC, 60Hz:       | 0.002mA | 0.015mA |
| 250VAC, 50Hz:       | 0.005mA | 0.025mA |

**Voltage Select Card:** Installed in 120VAC position unless otherwise specified

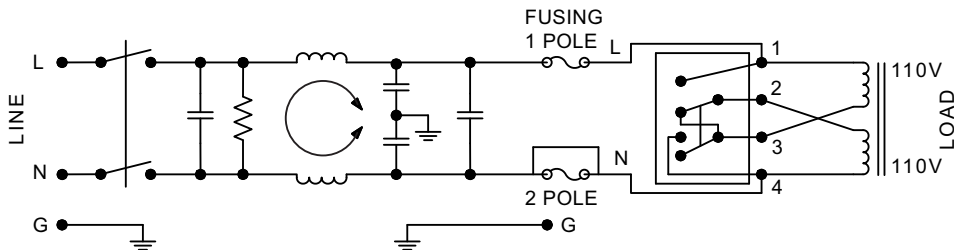
#### Agency Approvals:



**PM1 Series Simplified Schematic without Voltage Selector**



**PM1 Series Simplified Schematic with Voltage Selector**



| Nominal Current Rating | Part Number | Termination Line/Load | MINIMUM INSERTION LOSS - dB (50 ohm Circuit) |                 |     |     |     |     |    |    |    |
|------------------------|-------------|-----------------------|--|-----------------|-----|-----|-----|-----|----|----|----|
|                        |             |                       | MODE   | Frequency - MHz |     |     |     |     |    | 10 | 30 |
|                        |             |                       |  | .05             | .15 | .50 | .10 | 5.0 | 10 |    |    |
| 10A                    | PM1XXX10    | IEC/QC                | Common                                       | 10              | 20  | 30  | 33  | 25  | 20 | 15 |    |
|                        |             |                       | Differential                                 | 10              | 20  | 30  | 35  | 55  | 60 | 55 |    |
|                        | PM1XXXP0    | IEC/QC                | Common                                       | 123             | 234 | 30  | 35  | 25  | 25 | 30 |    |
|                        |             |                       | Differential                                 | 10              | 20  | 30  | 35  | 65  | 65 | 55 |    |

NOTE: Other combinations of terminals may be specified on special order.

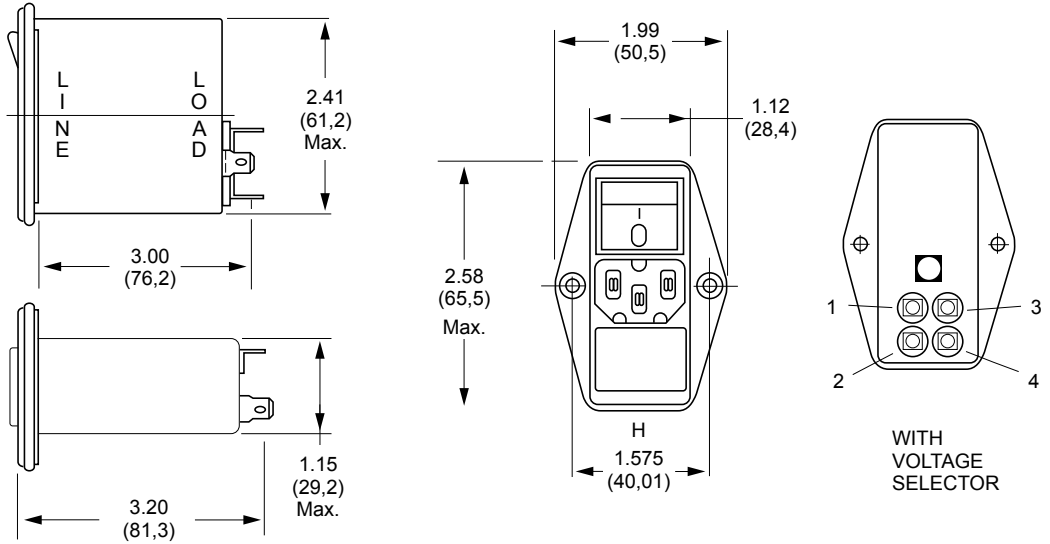
Dimensions are in inches and millimeters unless otherwise specified. Values in parentheses are metric equivalents.



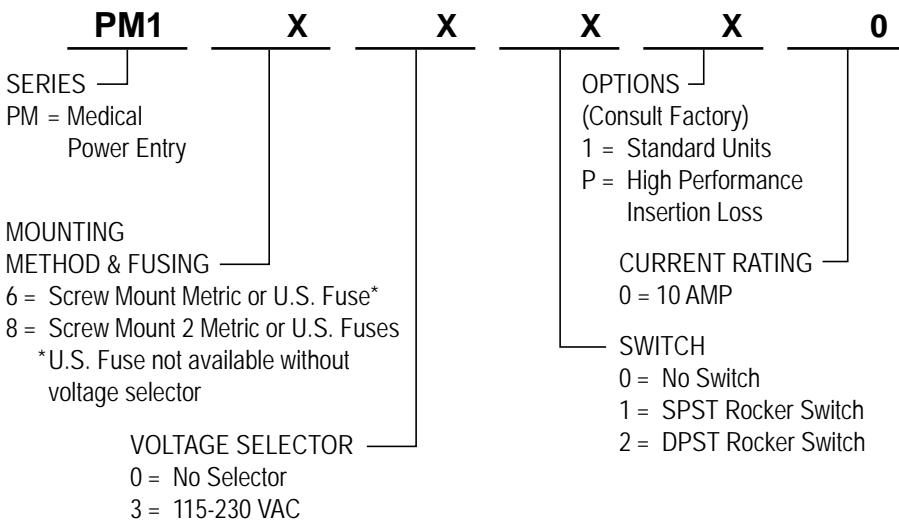
**Curtis Industries**  
A Division of Powers Holdings, Inc.

1-800-657-0853

**PM1**  
(10Amp)  
Dimensions



*How to Order*



**INSTALLATION INSTRUCTION  
IMPORTANT – CHANGING  
FUSE/VOLTAGE**

**PM1**  
To change fuse, remove power cord. Remove voltage selector and replace fuse. Reinsert fuse holder. To change the operating voltage on the PM1 Series, remove the power cord and rotate fuse holder block until desired voltage aligns with the mark on the module housing.

- **Filter shipped without fuse.**

**Always use caution when selecting and changing fuses and voltage requirements. Curtis Industries is not responsible for malfunction due to improper installation/selection of fuse and/or voltage select.**

Combination

MEDICAL FILTERS

**PM1 Screw Mount Series**

