

**SAFETY ORGANIZATION(S).**

THIS FILTER HAS BEEN FORMALLY RECOGNIZED, CERTIFIED OR APPROVED BY THE LISTED AGENCY. THEREFORE, ALL TEST/REQUIREMENTS SPECIFIED IN THE LATEST REVISION OF THE FOLLOWING AGENCY STANDARDS HAVE BEEN MET.

UL 1283, 544  
 CSA 22-2, NO. 0, 0.4, 8  
 VDE 565-3, 625

6 AMP., 120/250 VAC  
 6 AMP./40°C, 250 VAC  
 50-60Hz  
 2µA @ 120V 60Hz  
 5µA @ 250V 50Hz  
 -10°C TO +40°C @ RATED CURRENT, I<sub>r</sub>

IN AN AMBIENT, I<sub>0</sub>, HIGHER THAN 40°C, THE MAXIMUM OPERATING CURRENT, I<sub>0</sub>, IS AS FOLLOWS:

$$I_0 = I_r \sqrt{\frac{85 - I_0}{45}}$$

**RELIABILITY SPECIFICATIONS.**

STORAGE TEMPERATURE, -25°C TO +85°C  
 HUMIDITY, 21 DAYS @ 40°C 95% RH  
 CURRENT OVERLOAD TEST, 6 TIMES RATED CURRENT FOR 8 SECONDS

**TEST SPECIFICATIONS.**

INDUCTANCE, .52mH NOMINAL  
 CAPACITANCE, (MEASURED @ 1 KHz, 0.25 VAC MAX., 25°C ±1°C) LINE TO LINE, .047µF ±20%

DISCHARGE RESISTOR, 1.5 MΩ  
 LINE/GROUND AND LINE/LINE 6000 MΩ (MIN) AT 100 VDC  
 INSULATION RESISTANCE 20°C AND 50% RH (N/O DISCHARGE RESISTOR)

**RECOMMENDED RECEIVING INSPECTION HIPOT.**

LINES TO GROUND, 2250 VDC FOR 1 MINUTE  
 LINE TO LINE, 1450 VDC FOR 1 MINUTE

**FILTER APPROVAL:**  
 THE BEST WAY TO SELECT AND QUALIFY A FILTER IS FOR YOUR ENGINEERING TO TEST THE UNIT IN YOUR EQUIPMENT.

**TOLERANCE EXCEPT AS NOTED**

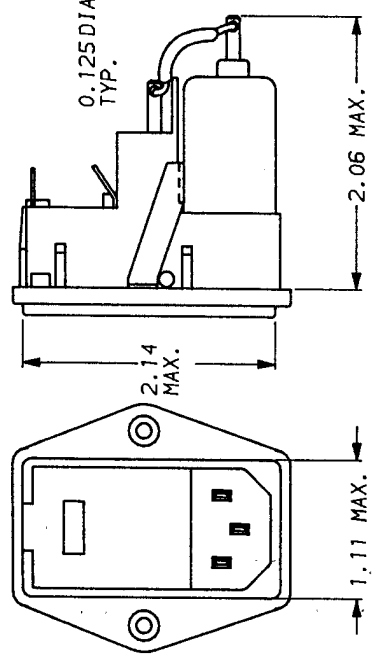
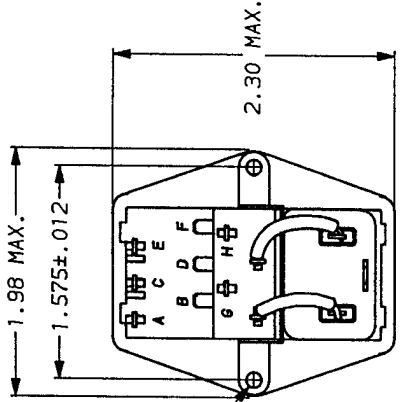
DECIMAL, .XXX .XX .X ANGLES ±1°  
 ENGLISH, ±.025  
 METRIC, ±

**MATERIAL: AS SUPPLIED**

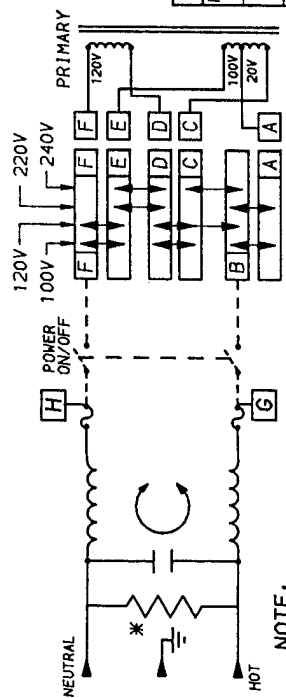
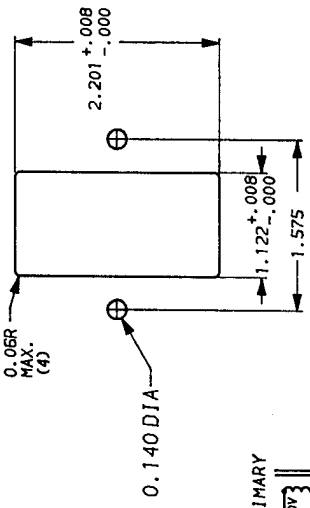
**FINISH:**

This document is proprietary to CORCOM INC. and is not to be reproduced nor used for manufacturing purposes except on CORCOM's order or prior written consent.

50Ω - 50Ω (MINIMUM)	INSERTION LOSS			
FREQUENCY MHz	.05	1.15	5.0	10
COMMON	3	8	13	15
DIFF. dB	1	4	14	20
			25	32
			38	42



**RECOMMENDED PANEL CUTOUT**  
 (NOT TO SCALE)



**NOTE:** 6EHL4M CONNECT JUMPER OR SWITCH FROM POINT H TO F AND FROM G TO B.

\*RESISTOR ADDED TO PRODUCT BUILT AFTER 3-30-92 (9212).

**CORCOM**  
 LIBERTYVILLE, IL 60048

**POWER LINE FILTER**

SCALE: NTS18-31-90  
 DATE: 18-31-90  
 DRG. NO. 6EHL4M.02  
 REV. 02  
 PARTS LIST: CFW  
 DRAW. BY: CFW