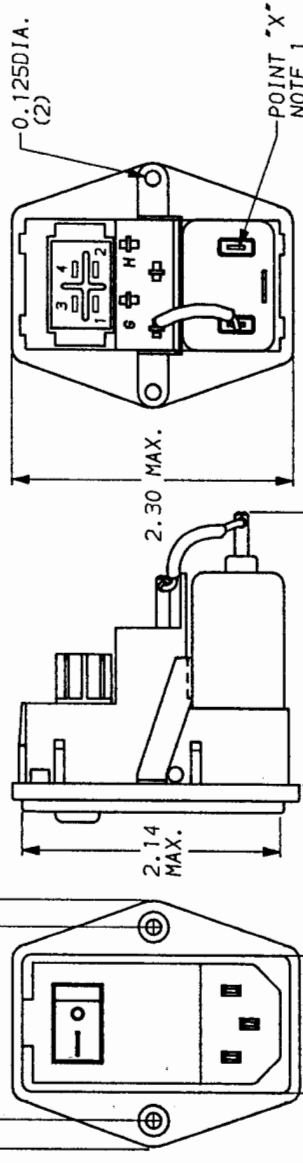
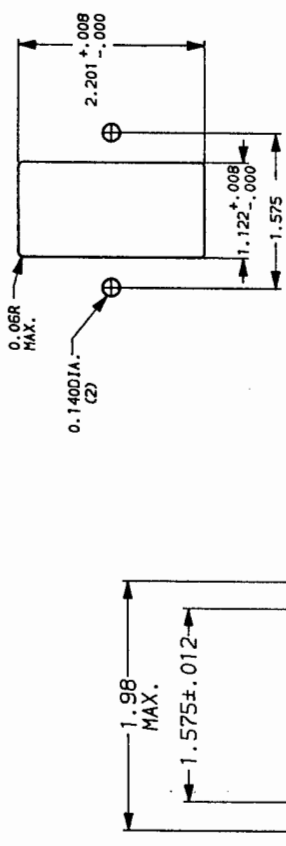
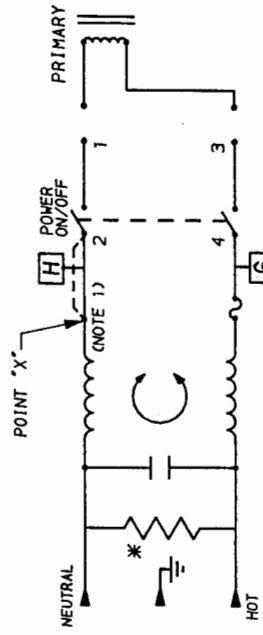


**RECOMMENDED PANEL CUTOUT**  
(NOT TO SCALE)



NOTE: ALL BACKPLATE TERMINALS ARE .110 FASTONS EXCEPT SWITCH TERMINALS WHICH ARE .187 FASTONS.



NOTE:  
1.) 6EHL1S JUMPER FROM POINT "X" TO 2 AND FROM "G" TO 4.

**SAFETY ORGANIZATION(S)**

THIS FILTER HAS BEEN FORMALLY RECOGNIZED, CERTIFIED OR APPROVED BY THE LISTED AGENCY. THEREFORE, ALL TEST/REQUIREMENTS SPECIFIED IN THE LATEST REVISION OF THE FOLLOWING AGENCY STANDARDS HAVE BEEN MET.

- UL RECOGNIZED
- UL 1283, 544
- CSA 22.2, NO. 0.0.4, 8
- VDE 565-3, 625
- SEV 1055/TP1977/S.1.1
- UL CERTIFIED
- UL 120V 60HZ
- VDE APPROVED
- SEV APPROVED
- 250V 50HZ

**OPERATING SPECIFICATIONS**

- LINE VOLTAGE/CURRENT:
- 6 AMP., 120/250 VAC
- 6 AMP./40°C, 250 VAC
- 50-60Hz
- LINE FREQUENCY:
- MAX. LEAKAGE CURRENT, EACH
- 2µA @ 120V 60HZ
- 5µA @ 250V 50HZ
- LINE TO GROUND
- OPERATING AMBIENT TEMP. RANGE:
- 10°C TO +40°C @ RATED CURRENT, I<sub>r</sub>

IN AN AMBIENT, T<sub>a</sub>, HIGHER THAN 40°C, THE MAXIMUM OPERATING CURRENT, I<sub>o</sub>, IS AS FOLLOWS:  
 $I_o = I_r \sqrt{\frac{85 - T_a}{45}}$

**RELIABILITY SPECIFICATIONS**

- STORAGE TEMPERATURE:
- 25°C TO +85°C
- HUMIDITY:
- 21 DAYS @ 40°C 95% RH
- CURRENT OVERLOAD TEST:
- 6 TIMES RATED CURRENT FOR 8 SECONDS

**TEST SPECIFICATIONS**

- INDUCTANCE:
- .52mH NOMINAL
- CAPACITANCE, (MEASURED @ 1 KHZ, 0.25 VAC MAX., 25°C ±1°C)
- LINE TO LINE:
- .047µF ±20%

- DISCHARGE RESISTOR:
- 1.5 MΩ
- LINE/GROUND AND LINE/LINE
- 6000 MΩ (MIN) AT 100 VDC
- INSULATION RESISTANCE
- 20°C AND 50% RH
- (W/O DISCHARGE RESISTOR)

**RECOMMENDED RECEIVING INSPECTION HIPOIT.**

- LINE TO GROUND:
- 2250 VDC FOR 1 MINUTE
- LINE TO LINE:
- 1450 VDC FOR 1 MINUTE

**FILTER APPROVAL:**

THE BEST WAY TO SELECT AND QUALIFY A FILTER IS FOR YOUR ENGINEERING TO TEST THE UNIT IN YOUR EQUIPMENT.

TOLERANCE EXCEPT AS NOTED  
DECIMAL: .XXX .XX .X ANGLES ±1°  
ENGLISH: ±.025  
METRIC: ±

FREQUENCY MHZ	50Ω - 50p (MINIMUM) INSERTION LOSS									
	.05	.15	.50	1.0	2.0	5.0	10	30	100	300
COMMON	3	8	13	15	16	18	18	18	18	18
DIFF. dB	1	4	14	20	25	32	38	42	42	42

This document is proprietary to CORCOM INC. and is not to be reproduced nor used for manufacturing purposes except on CORCOM's order or prior written consent.



POWER LINE FILTER

SCALE	DATE	DRG. NO.	REV.
NTS	3-29-88	6EHL1S.04	
DRW. BY	ORIGINATOR		
LJD	CFW		

\*RESISTOR ADDED TO PRODUCT BUILT AFTER 3-30-92 (9212).