

C. Westby 12-6-91
APPROVED/DATE

2
REV

SAFETY ORGANIZATION(S)

THIS FILTER HAS BEEN FORMALLY RECOGNIZED, CERTIFIED OR APPROVED BY THE LISTED AGENCY. THEREFORE, ALL TEST/REQUIREMENTS SPECIFIED IN THE LATEST REVISION OF THE FOLLOWING AGENCY STANDARDS HAVE BEEN MET:

- UL RECOGNIZED
- UL 1283
- CSA CERTIFIED
- CSA 22.2, NO. 0.0.4, 8
- VDE APPROVED
- VDE 565-3
- SEMKO APPROVED
- SEN 432901

OPERATING SPECIFICATIONS

- LINE VOLTAGE/CURRENT, 6 AMP., 120/250 VAC
- LINE FREQUENCY, 6 AMP./40°C, 250 VAC 50-60Hz
- MAX. LEAKAGE CURRENT, EACH LINE TO GROUND, .20 mA at 120V 60 Hz
- OPERATING AMBIENT TEMP. RANGE, .33 mA at 250V 50 Hz

IN AN AMBIENT, T_a , HIGHER THAN 40°C, THE MAXIMUM OPERATING CURRENT, I_o , IS AS FOLLOWS,

$$I_o = I_r \sqrt{\frac{95 - T_a}{45}}$$

RELIABILITY SPECIFICATIONS

- STORAGE TEMPERATURE, -40°C TO +85°C
- HUMIDITY, 21 DAYS @ 40°C 95% RH
- CURRENT OVERLOAD TEST, 6 TIMES RATED CURRENT FOR 8 SECONDS

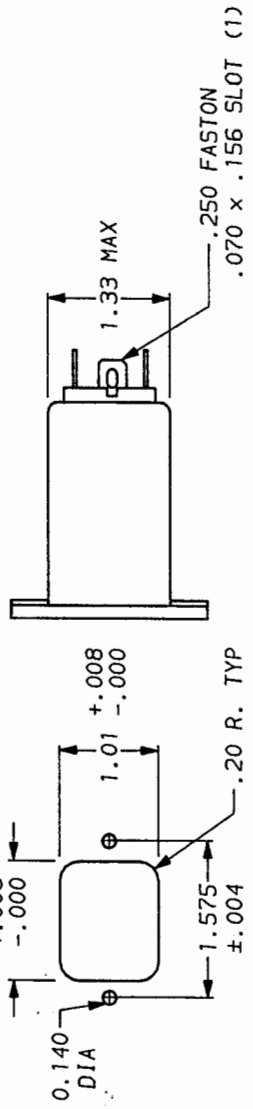
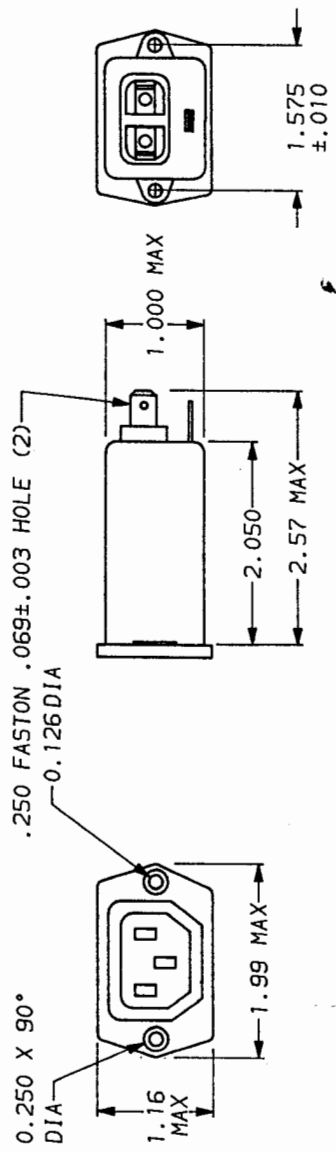
TEST SPECIFICATIONS

- INDUCTANCE, .465 mH NOMINAL
- CAPACITANCE, (MEASURED @ 1 KHZ, 0.25 VAC MAX., 25°C ±1°C) .003µF ±20%
- LINE TO GROUND, .047µF ±20%
- LINE TO LINE, 1.5 µg
- DISCHARGE RESISTOR, 6000 Ω (MIN) AT 100 VDC
- LINE/GROUND AND LINE/LINE INSULATION RESISTANCE 20°C AND 50% RH
- (W/O DISCHARGE RESISTOR)

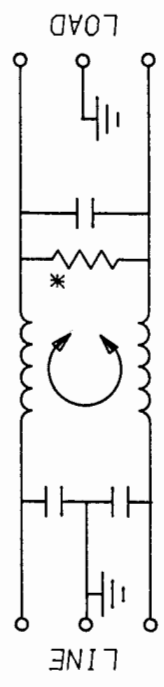
RECOMMENDED RECEIVING INSPECTION HIPOI.

- 2250 VDC FOR 1 MINUTE
- 1450 VDC FOR 1 MINUTE

FILTER APPROVAL:
THE BEST WAY TO SELECT AND QUALIFY A FILTER IS FOR YOUR ENGINEERING TO TEST THE UNIT IN YOUR EQUIPMENT.



(THIS FILTER LINE AND LOAD ARE REVERSED; THE SOCKET IS LOAD.)



TOLERANCE EXCEPT AS NOTED
DECIMAL, .XXX .XX .X ANGLES
ENGLISH, ±.020 ± 1°
METRIC, ±

| FREQUENCY MHZ | COMMON dB | DIFF. dB | 500 - 500 (MINIMUM) INSERTION LOSS |
|------------------|--------------|-------------|------------------------------------|
| .01 | .05 | 1 | 1 3 5 10 30 |
| .1 | .15 | 1 | 3 5 10 30 |
| 1 | 1 | 1 | 5 10 30 48 47 |
| 10 | 10 | 1 | 20 37 42 48 47 |
| 100 | 100 | 1 | 2 10 14 20 33 42 40 |

This document is proprietary to CORCOM INC. and is not to be reproduced nor used for manufacturing purposes except on CORCOM's order or prior written consent.



ACCESSORY OUTLET FILTER

SCALE: NTS 11-5-90
REV. NO. 6EBF1.02
REV. BY CFW CFW

*RESISTOR ADDED TO PRODUCT BUILT AFTER 3-30-92 (9212)