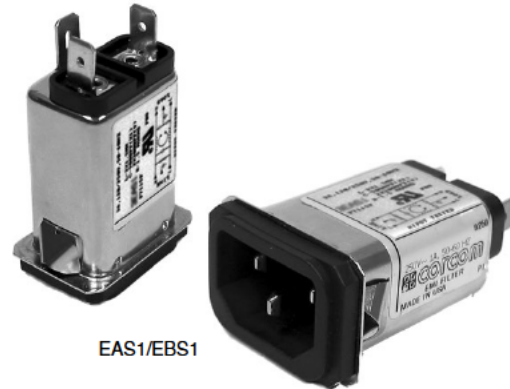


Snap-In Compact RFI Filter IEC Connector Package

EAS, EBS Series



UL Recognized
CSA Certified
VDE Approved



EAS1/EBS1

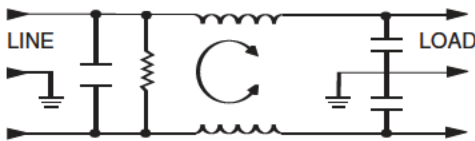
EAS Series

This filter offers the performance characteristics of the EEA susceptibility filter with the additional advantage of a snap-in panel mount. The EAS series supersedes the EF series by providing superior performance, particularly in the common mode at low frequencies.

EBS Series

This filter offers the performance characteristics of the EEB susceptibility filter with the additional advantage of a snap-in panel mount. The EBS provides enhanced differential mode performance compared to both the EAS and EF series.

Electrical Schematic



Resistor location for reference only.

Specifications

- Maximum leakage current, each line-to-ground**
 - @ 120 VAC 60 Hz: .22 mA
 - @ 250 VAC 50 Hz: .38 mA
- Hipot rating (one minute):**
 - line-to-ground: 1500 VAC
 - line-to-line: 1450 VDC
- Operating frequency:** 50/60 Hz
- Rated voltage (max.):** 250 VAC
- Minimum insertion loss in dB:**
 - Line-to-ground in 50 ohm circuit

Current Rating	Frequency-MHz								
	.01	.05	.1	.15	.5	1	5	10	30

EAS Models									
1A	12	23	29	32	41	47	47	47	40
3A	-	10	15	19	30	36	48	50	47
6A	-	1	4	10	22	28	42	48	47
10A	-	1	3	5	14	20	32	38	47
15A	-	-	-	1	5	8	20	25	40

EBS Models									
1A	12	23	29	32	41	47	47	47	40
3A	-	10	14	18	30	36	48	50	47
6A	-	1	4	10	22	28	42	48	47
10A	-	1	3	5	14	20	32	38	47
15A	-	-	-	1	5	8	20	26	40

Line-to-line in 50 ohm circuit

Current Rating	Frequency-MHz						
	.5	1	1.5	3	5	10	30

EAS Models							
1A	1	9	19	32	42	45	40
3A	2	4	6	20	35	45	40
6A	2	4	6	6	24	40	40
10A	1	4	5	5	5	30	40
15A	1	4	4	12	14	15	40

Current Rating	Frequency-MHz							
	.01	.15	.5	1	3	5	10	30

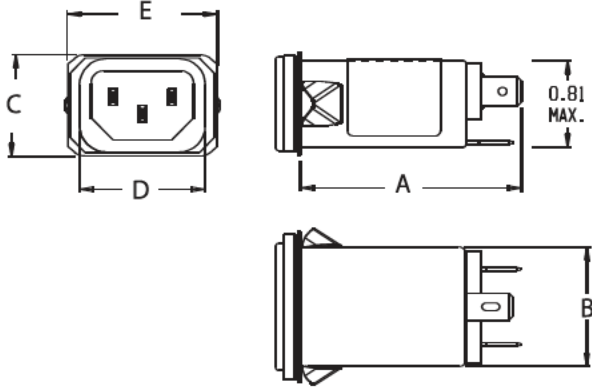
EBS Models								
1A	1	3	14	23	41	47	50	44
3A	1	2	11	14	25	38	44	40
6A	1	2	10	14	20	33	42	40
10A	1	2	10	16	19	19	39	40
15A	-	2	10	16	24	28	28	40

Snap-In Compact RFI Filter IEC Connector Package (Continued)

EAS, EBS Series

Case Style

EAS1/EBS1



Typical dimensions:
 Terminals: .250 [6.35] (3)
 Slot: .07 x .16 [1.8 x 4.1]

Holes: .07 [1.8] Dia.(2)

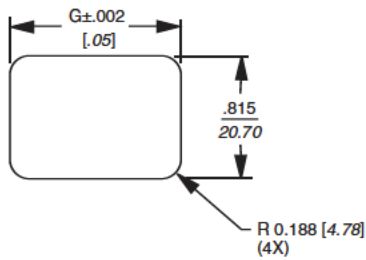
Case Dimensions

Part No.	A (max)	B (max)	C (max)	D $\pm .010$ $\pm .25$	E (max)
EAS1, EBS1	2.20 55.88	1.15 29.2	.96 24.38	1.185 30.10	1.41 35.81

Part Numbers

1EAS1	1EBS1
3EAS1	3EBS1
6EAS1	6EBS1
10EAS1	10EBS1
15EAS1	15EBS1
Line Cord No.	GA400
Insulating Boot No.	FA601

Recommended Panel Cutout



Front Mount Only

Panel Thickness	G Dim. ± .002
0.031 - 0.052 [.79 - 1.32]	1.260 [32.00]
0.046 - 0.068 [1.17 - 1.73]	1.350 [34.29]