

## RTEN SERIES

### Multipurpose Three-Phase Filter with Many Current Variations



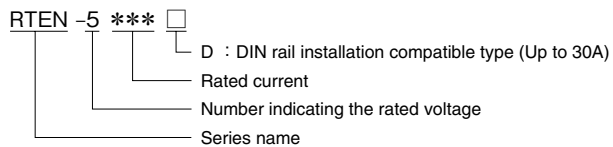
#### FEATURES

- 6 to 300A wide range lineup.
- Small due to L1, light and thin.
- Low-profile design.
- Self-tightening screws and an open/close type cover make wiring work easier.
- Terminal block cover included for safety.
- DIN rail installation compatible type is also available.
- Compliant with RoHS directives.

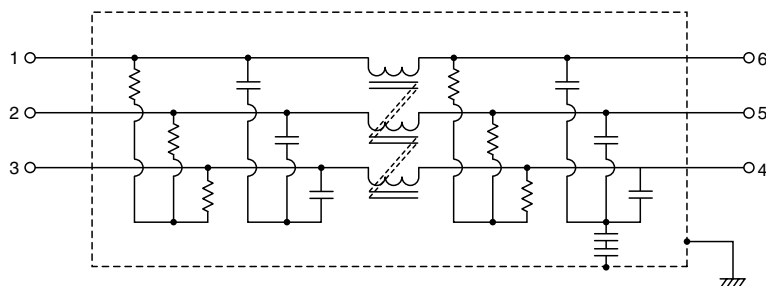
#### SAFETY STANDARDS

UL1283	File No. E62388 (Up to 150A)
EN60939	Licence Ref. No. SE/07115-5 (Up to 60A) SE/07115-4 (80A to)

#### PRODUCT IDENTIFICATION



#### CIRCUIT DIAGRAM



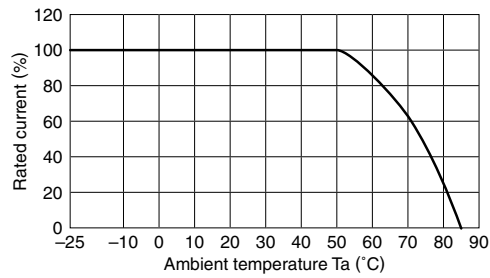
• Conformity to RoHS Directive: This means that, in conformity with EU Directive 2002/95/EC, lead, cadmium, mercury, hexavalent chromium, and specific bromine-based flame retardants, PBB and PBDE, have not been used, except for exempted applications.

• All specifications are subject to change without notice.

**ELECTRICAL CHARACTERISTICS**

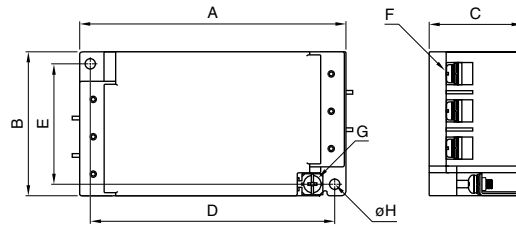
Part No.	Rated voltage (AC/DC)	Rated current (AC/DC)	Withstand voltage	Insulation resistance	Leakage current	Operating temperature range	With derating over	DC resistance (mΩ)	Attenuation frequency range (MHz)	
									Common mode	Differential mode
									at 25dB	at 25dB
RTEN-5006	500V	6A	AC:2500V 60s [Between line to ground]	100MΩ min. [DC:500V/ 1min.]	2.5mA max. [250V/60Hz]  5mA max. [500V/60Hz]	-25 to +85°C	50°C	145 max.	0.2 to 10	0.2 to 30
RTEN-5010		10A						60 max.	0.2 to 10	0.2 to 30
RTEN-5020		20A						25 max.	0.3 to 8	0.2 to 30
RTEN-5030		30A						13 max.	0.5 to 8	0.2 to 30
RTEN-5040		40A						10 max.	0.3 to 7	0.2 to 30
RTEN-5050		50A						7 max.	0.5 to 7	0.2 to 30
RTEN-5060		60A						5 max.	0.7 to 5	0.2 to 30
RTEN-5080		80A						5 max.	0.3 to 7	0.2 to 30
RTEN-5100		100A						4 max.	0.3 to 7	0.2 to 30
RTEN-5150		150A						3 max.	0.3 to 7	0.2 to 20
RTEN-5200		200A						2 max.	0.5 to 10	0.2 to 20
RTEN-5250		250A						1.5 max.	1 to 6	0.2 to 20
RTEN-5300		300A						1 max.	1.5 to 5	0.2 to 20

**DERATINGS**

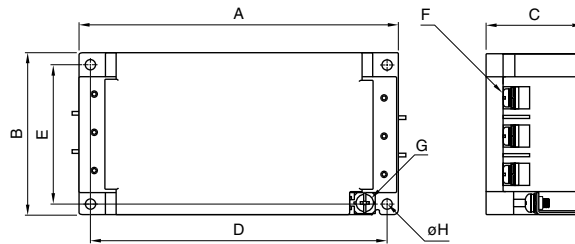


SHAPES AND DIMENSIONS

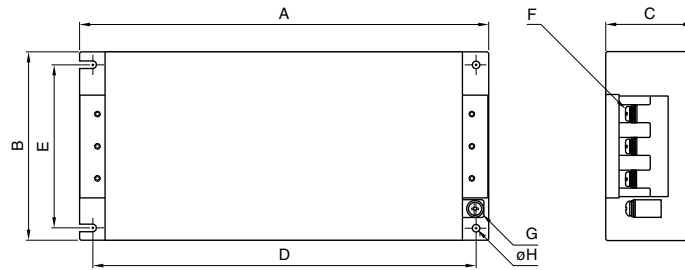
RTEN-5006/5010



RTEN-5020/5030/5040/5050/5060



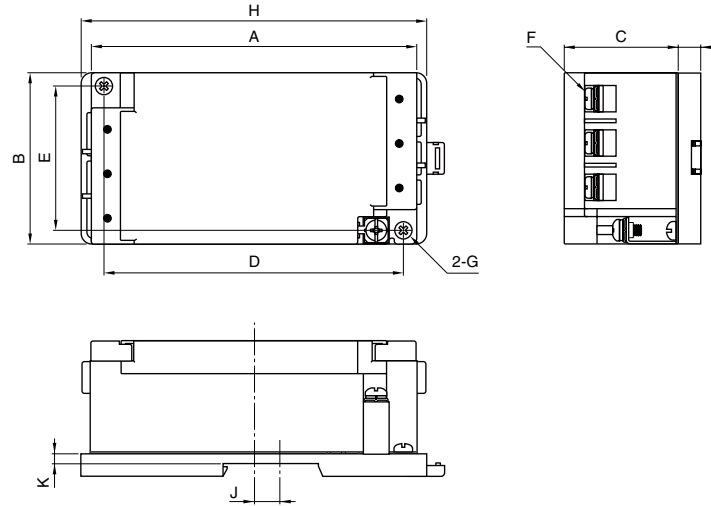
RTEN-5080/5100/5150/5200/5250/5300



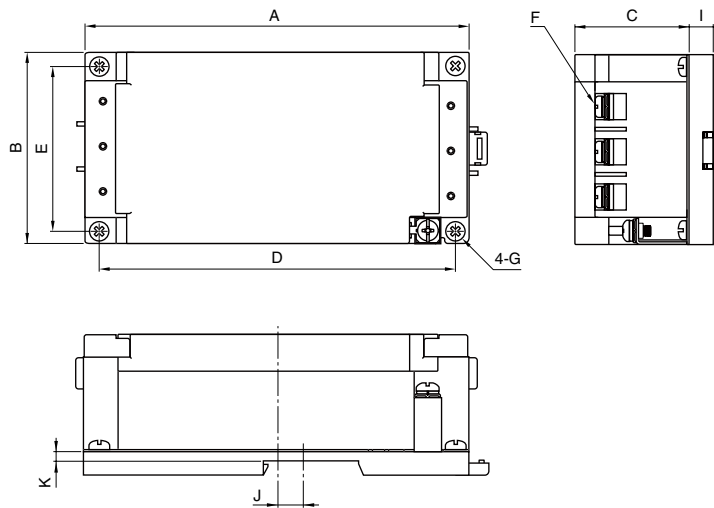
Dimensions in mm

Part No.	A	B	C	D	E	F	G	φ H	Recommended clamping torque
RTEN-5006	120	63	42	110	53	M4	M4	4.5	M4 : 1.27N · m M5 : 2.5N · m M6 : 4.8N · m M8 : 7.64N · m M10 : 11.8N · m
RTEN-5010									
RTEN-5020	140	70	42	130	60	M4	M4		
RTEN-5030									
RTEN-5040	170	90	54	160	80	M5	M4		
RTEN-5050									
RTEN-5060	267	161	85	247	135	M8	M6		
RTEN-5080									
RTEN-5100	290	190	88	270	164	M8	M6		
RTEN-5150									
RTEN-5200	390	195	103	370	169	M10	M8	6.5	
RTEN-5250									
RTEN-5300									

RTEN-5006D/5010D



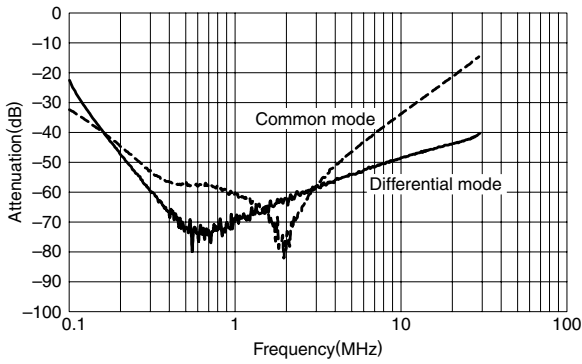
RTEN-5020D/5030D



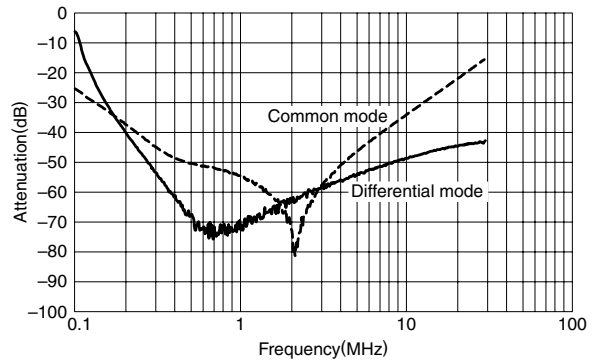
Part No.	Dimensions in mm										
	A	B	C	D	E	F	G	H	I	J	K
RTEN-5006D	120	63	42	110	53	M4	M4	127	8.4	6	3.5
RTEN-5010D								-	8.4	12.5	3.5
RTEN-5020D	140	70	42	130	60	M4	M4	-	8.4	12.5	3.5
RTEN-5030D								-	8.4	12.5	3.5

■ ATTENUATION vs. FREQUENCY CHARACTERISTICS

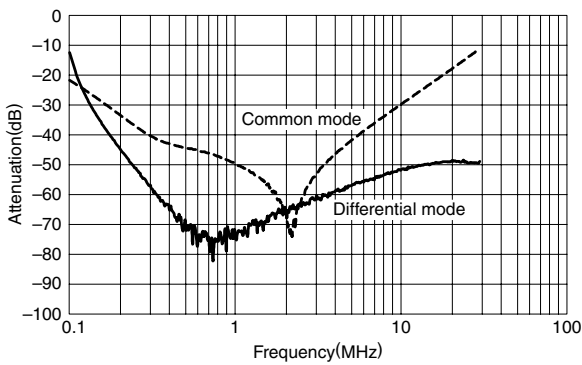
RTEN-5006



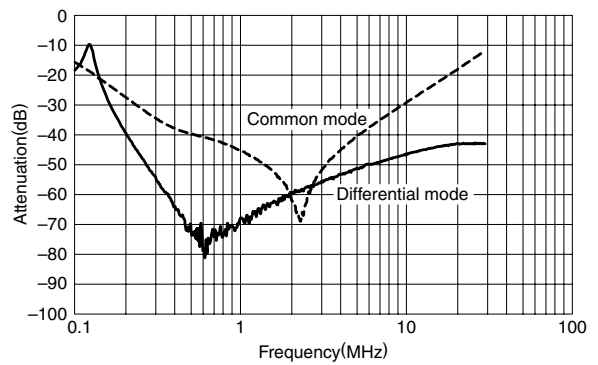
RTEN-5010



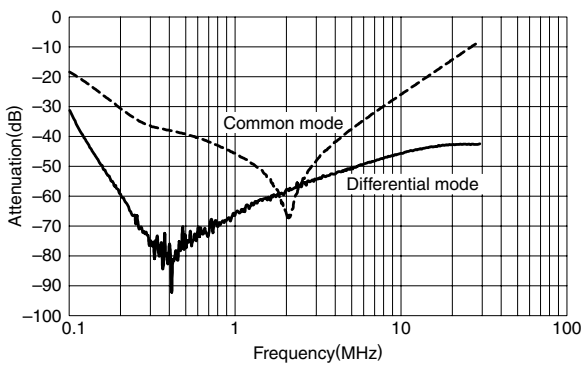
RTEN-5020



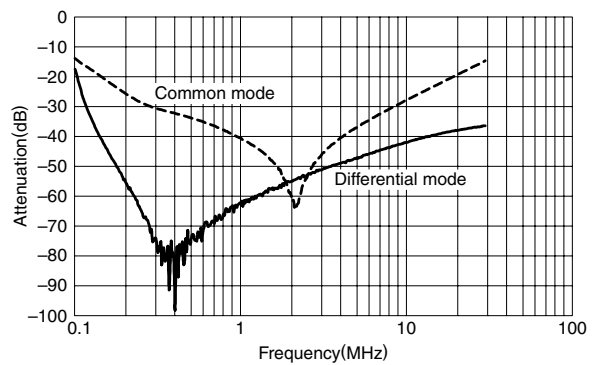
RTEN-5030



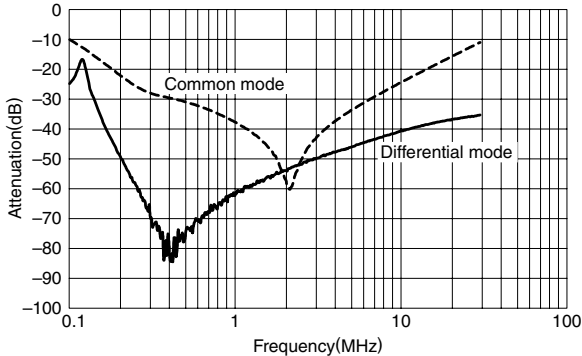
RTEN-5040



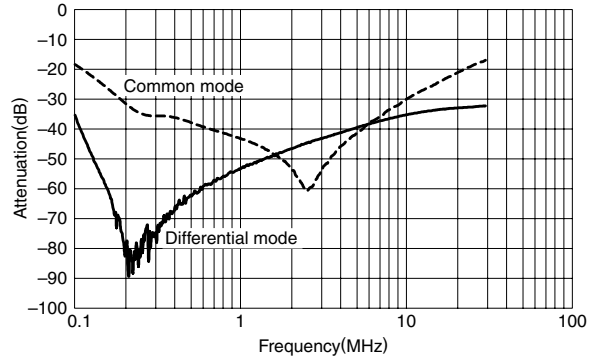
RTEN-5050



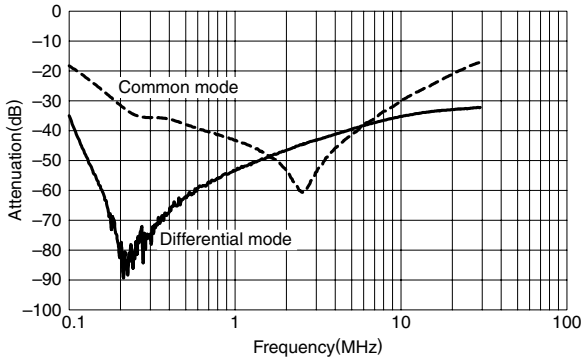
RTEN-5060



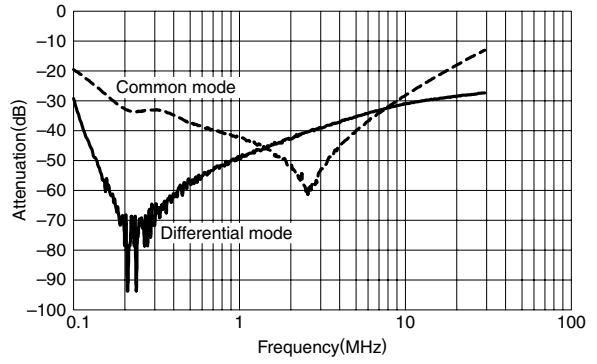
RTEN-5080



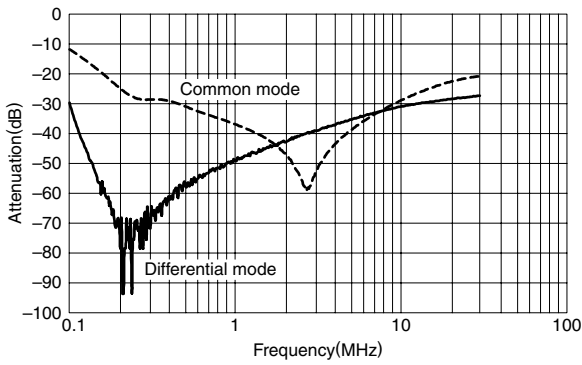
RTEN-5100



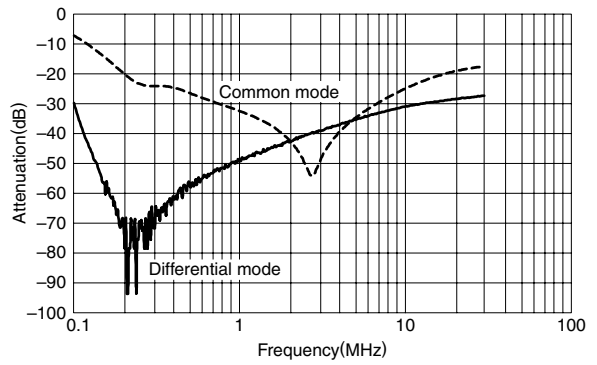
RTEN-5150



RTEN-5200



RTEN-5250



RTEN-5300

