

MBS48 Series

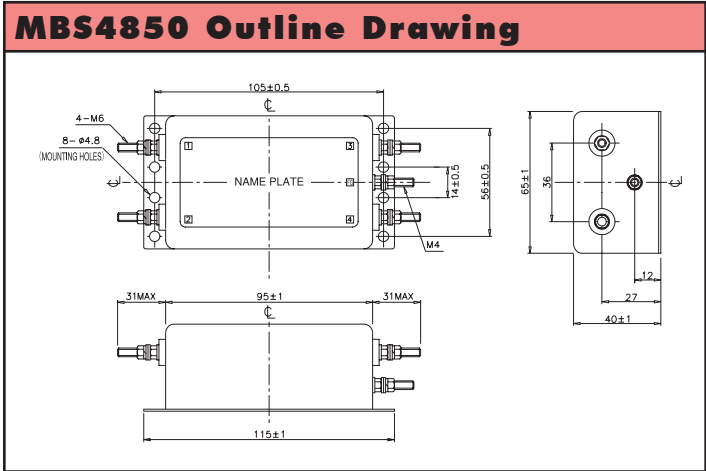
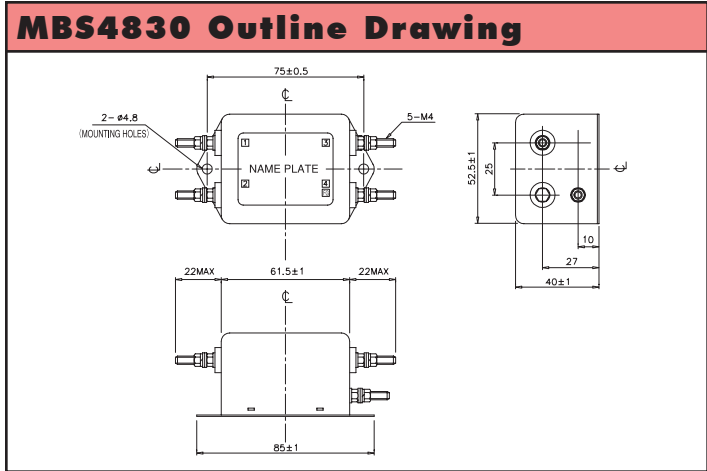
30A and 50A, 48VDC EMI Filters

RoHS

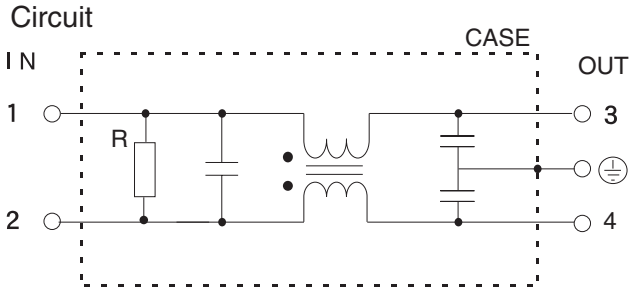


- Features**
- ◆ High Attenuation
 - ◆ Stud Terminal Connection
 - ◆ Compact Size

Specifications		MODELS	MBS4830	MBS4850
ITEMS				
Rated Voltage	VDC		48VDC (72VDC Max)	
Rated Current	A		30A, 45A peak surge for 1 min	50A, 75A peak surge for 1 min
Test Voltage (For 1 min.)	V		Terminals to Case: 700VDC (20mA) at 25°C, 70% RH Between terminals 100VDC (20mA) at 25°C, 70% RH	
Isolation Resistance	MΩ		500MΩ minimum at 25°C, 70% RH	
Leakage Current	mA		Not Applicable	
DC Resistance	mΩ		8	4
Temperature Rise	°C		35	30
Operating Temperature	°C		-25° to +85°C (see derating curve)	
Storage Temperature	°C		-40° to +85°	
Operating Humidity	-		30 to 95% RH (non condensing)	
Storage Humidity	-		10 to 95% RH (non condensing)	
Vibration	-		10-55-10Hz, Amplitude 1.5mm (1 minute), X, Y, Z (2 hour each)	
Weight (Typ)	g		310	650
Warranty	-		1 Year	

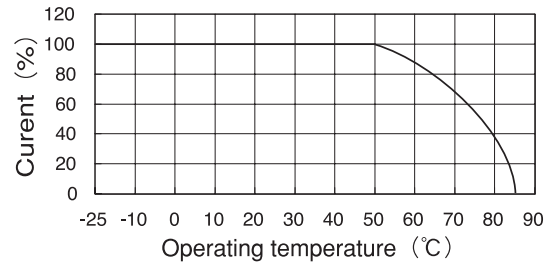


Circuit



Derating

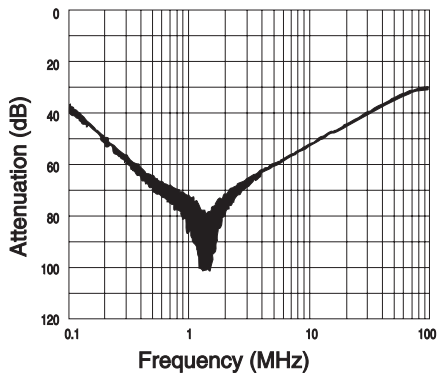
Derating



Typ. Insertion Loss, Symmetrical

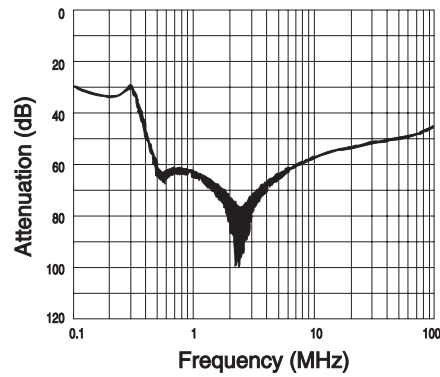
(1) Asymmetrical

MBS4830

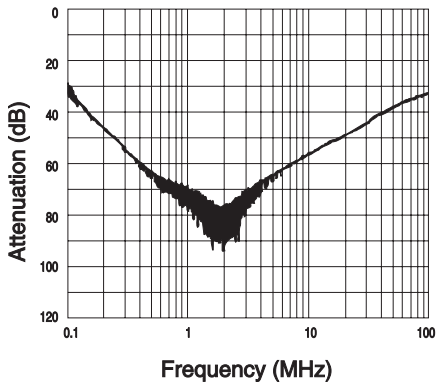


(2) Symmetrical

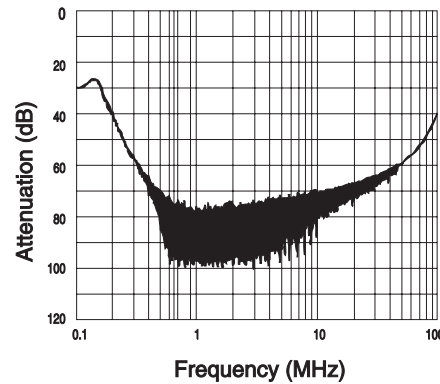
MBS4830



MBS4850



MBS4850



For Additional Information, please visit us.tdk-lambda.com/lp/products/mbs-series.htm