

DESCRIPTION	APP'D./DATE	REV
C. W. W. 8-27-90		1

SAFETY ORGANIZATION(S).

THIS FILTER HAS BEEN FORMALLY RECOGNIZED, CERTIFIED OR APPROVED BY THE LISTED AGENCY. THEREFORE, ALL TEST/REQUIREMENTS SPECIFIED IN THE LATEST REVISION OF THE FOLLOWING AGENCY STANDARDS HAVE BEEN MET.

UL 1283
CSA 22.2 NO. 0, 0.4, 8

20 OR 30 AMP, 250VAC PHASE TO NEUTRAL/GND
20 OR 30 AMP, 440VAC PHASE TO PHASE

LINE FREQUENCY,
MAX. LEAKAGE CURRENT, EACH
LINE TO GROUND
OPERATING AMBIENT TEMP. RANGE,

50-60Hz
1.4 ma @ 120 V 50 Hz
3.4 ma @ 250 V 50 Hz
-10°C TO +40°C @ RATED CURRENT, I_r

IN AN AMBIENT, I_a, HIGHER THAN 40°C, THE MAXIMUM OPERATING CURRENT, I_o, IS AS FOLLOWS:

$$I_o = I_r \sqrt{\frac{85 - I_a}{45}}$$

RELIABILITY SPECIFICATIONS,
STORAGE TEMPERATURE,
HUMIDITY,

-25°C TO +85°C
21 DAYS @ 40°C 95% RH

TEST SPECIFICATIONS.

INDUCTANCE, 20A = 4.4mH NOMINAL 30A = 1.97 mH NOMINAL

CAPACITANCE, (MEASURED @ 1 KHz, 0.25 VAC MAX., 25°C ±1°C)
PHASE/NEUTRAL TO GROUND,
PHASE TO NEUTRAL,

.018uF ±20%
3.29uF ±20%
110 KΩ

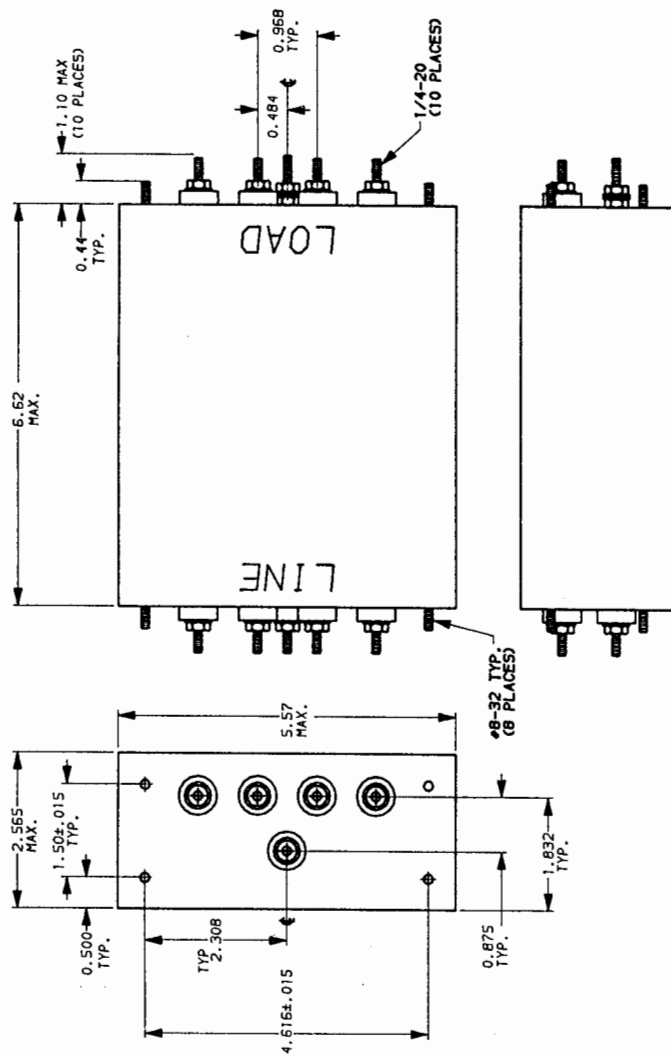
DISCHARGE RESISTOR;
PHASE/NEUTRAL TO GROUND AND
PHASE TO PHASE INSULATION
RESISTANCE,
(W/O DISCHARGE RESISTOR)

6000 MΩ (MIN) AT 100 VDC
20°C AND 50% RH

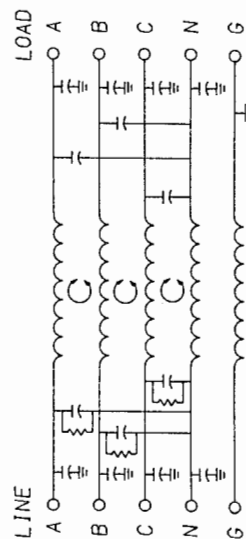
RECOMMENDED RECEIVING INSPECTION HIPOT.

PHASE TO GROUND
NEUTRAL TO GROUND
PHASE TO NEUTRAL
FILTER APPROVAL.

1500 VAC FOR 1 MINUTE
1500 VAC FOR 1 MINUTE
1450 VDC FOR 1 MINUTE
THE BEST WAY TO SELECT AND QUALIFY A FILTER IS FOR YOUR ENGINEERING TO TEST THE UNIT IN YOUR EQUIPMENT.



NOTE: UNLESS OTHERWISE SPECIFIED, TOLERANCE TO BE ±.045



50Ω - 50Ω (MINIMUM)		INSERTION LOSS	
FREQUENCY MHz			
COMMON	20A	22	39
dB	30A	15	30
DIFF.	20A	20	50
dB	30A	5	43

This document is proprietary to CORCOM INC. and is not to be reproduced nor used for manufacturing purposes except on CORCOM's order or prior written consent.



POWER LINE FILTER

SCALE	DATE	DRG. NO.	REV.
1:2	5-9-88	20AYP6C & 30AYP6C.01	
TDL	CW		