

C. Westman 5-26-92
 APPROVED BY/DATE

2
 REV

SAFETY ORGANIZATION(S).

THIS FILTER HAS BEEN FORMALLY RECOGNIZED, CERTIFIED OR APPROVED BY THE LISTED AGENCY. THEREFORE, ALL TEST/REQUIREMENTS SPECIFIED IN THE LATEST REVISION OF THE FOLLOWING AGENCY STANDARDS HAVE BEEN MET:

UL 1283
 CSA 22.2, NO.0,0,4,8
 VDE 565-3

UL RECOGNIZED
 CSA CERTIFIED
 VDE APPROVED

OPERATING SPECIFICATIONS.

LINE VOLTAGE/CURRENT:
 10 AMP., 120/250 VAC
 8 AMP./40°C, 250 VAC
 50-60HZ
 .75mA @ 120V 60Hz
 1.25mA @ 250V 50Hz
 OPERATING AMBIENT TEMP. RANGE:
 -10°C TO +40°C @ RATED CURRENT, I_r

IN AN AMBIENT, T_a, HIGHER THAN 40°C, THE MAXIMUM OPERATING CURRENT, I_o, IS AS FOLLOWS:

$$I_o = I_r \sqrt{\frac{85 - T_a}{45}}$$

RELIABILITY SPECIFICATIONS.

STORAGE TEMPERATURE:
 -25°C TO +85°C
 HUMIDITY:
 21 DAYS @ 40°C 95% RH
 CURRENT OVERLOAD TEST:
 6 TIMES RATED CURRENT FOR 8 SECONDS

TEST SPECIFICATIONS.

INDUCTANCE:
 L-9.5mH NOMINAL
 N-9.57mH NOMINAL
 CAPACITANCE: (MEASURED @ 1 KHZ, 0.25 VAC MAX., 25°C ±1°C)
 LINE TO GROUND:
 .01µF ±20%
 LINE TO LINE:
 1.77µF ±20%
 DISCHARGE RESISTOR:
 165KΩ
 LINE/GROUND AND LINE/LINE
 INSULATION RESISTANCE
 (N/O DISCHARGE RESISTOR)
 6000 MΩ (MIN) AT 100 VDC
 20°C AND 50% RH

RECOMMENDED RECEIVING INSPECTION HIPOT.

2250 VDC FOR 1 MINUTE
 LINES TO GROUND,
 1450 VDC FOR 1 MINUTE
 LINE TO LINE.

FILTER APPROVAL:

THE BEST WAY TO SELECT AND QUALIFY A FILTER IS FOR YOUR ENGINEERING TO TEST THE UNIT IN YOUR EQUIPMENT.

TOLERANCE EXCEPT AS NOTED

DECIMAL: .XXX .XX .X ANGLES ± 1°
 ENGLISH: ±.025
 METRIC: ±

MATERIAL: AS SUPPLIED

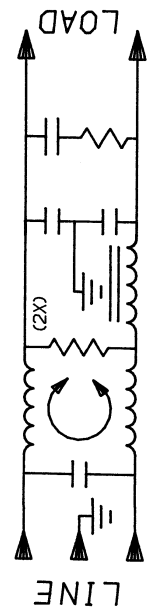
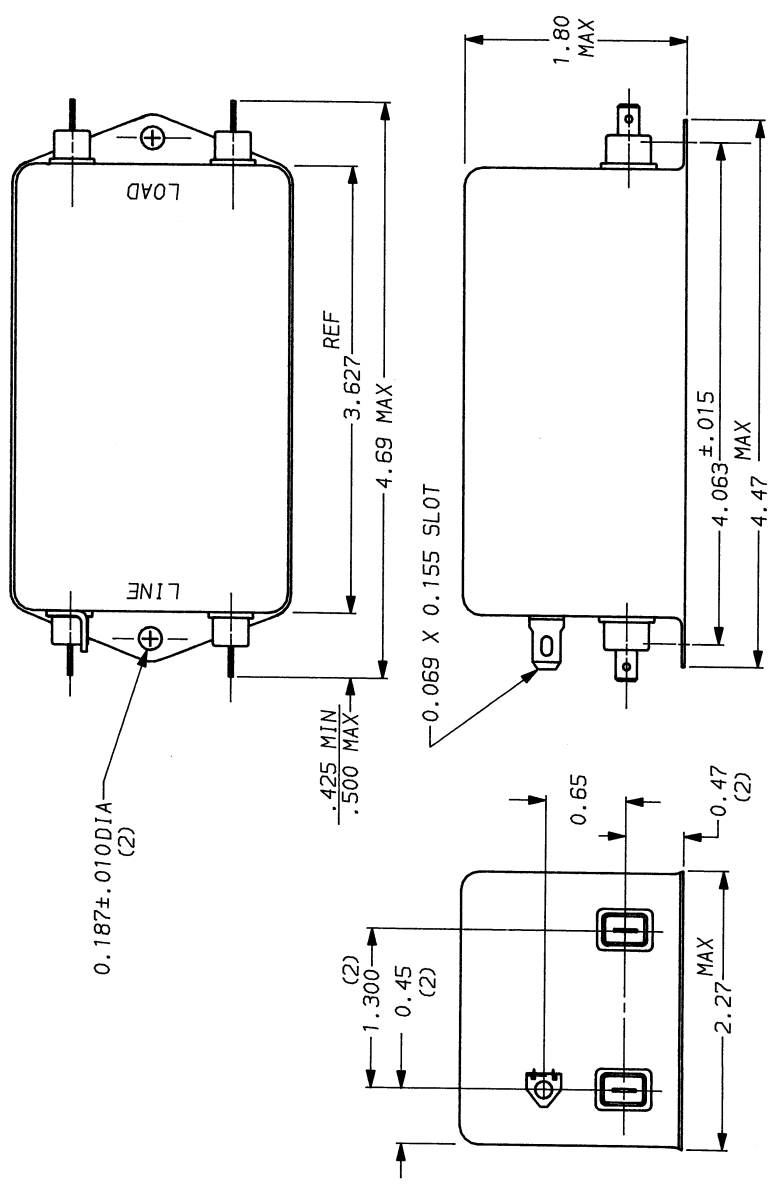
FINISH:

SOLE DATE DRG. NO. REV.
 NTS 5-12-88 10VT1.02
 DRN. BY ORIGINATOR
 TDL CW

50Ω - 50μ (MINIMUM) INSERTION LOSS

FREQUENCY MHZ	.01	.02	.05	.15	.5	1	2	5	8	10	20	30
COMMON	12	18	26	36	52	50	50	50	50	50	50	50
DIFF. dB	7	8	17	52	70	70	65	65	65	65	60	65

This document is proprietary to CORCOM INC. and is not to be reproduced nor used for manufacturing purposes except on CORCOM's order or prior written consent.



corcom
 LIBERTYVILLE, IL 60048

POWER LINE FILTER