

SAFETY ORGANIZATION(S):

THIS FILTER HAS BEEN FORMALLY RECOGNIZED, CERTIFIED OR APPROVED BY THE LISTED AGENCY. THEREFORE, ALL TEST/REQUIREMENTS SPECIFIED IN THE LATEST REVISION OF THE FOLLOWING AGENCY STANDARDS HAVE BEEN MET:

- UL RECOGNIZED
- CSA CERTIFIED
- VDE APPROVED
- SEV APPROVED
- UL 1283
- CSA 22.2, NO.0.0.4, 8
- VDE 565-3
- SEV 1055/TP1977/5.1.1

OPERATING SPECIFICATIONS:

LINE VOLTAGE/CURRENT:

- LINE FREQUENCY: 10 AMP., 120/250 VAC
- MAX. LEAKAGE CURRENT, EACH 8 AMP./40°C, 250 VAC
- LINE TO GROUND .3mA @ 120V 60Hz
- OPERATING AMBIENT TEMP. RANGE: .5mA @ 250V 50Hz
- 10°C TO +40°C @ RATED CURRENT, I_r

IN AN AMBIENT, I₀, HIGHER THAN 40°C, THE MAXIMUM OPERATING CURRENT, I₀, IS AS FOLLOWS:

$$I_0 = I_r \sqrt{\frac{85 - I_0}{45}}$$

RELIABILITY SPECIFICATIONS:

- STORAGE TEMPERATURE: -25°C TO +85°C
- HUMIDITY: 21 DAYS @ 40°C 95% RH
- CURRENT OVERLOAD TEST: 6 TIMES RATED CURRENT FOR 8 SECONDS

TEST SPECIFICATIONS:

- INDUCTANCE: L-9.5mH NOMINAL
- CAPACITANCE: (MEASURED @ 1 KHz, 0.25 VAC MAX., 25°C ±1°C) N-9.57mH NOMINAL
- LINE TO GROUND: .004µF ±20%
- DISCHARGE RESISTOR: 1.77µF ±20%
- INSULATION RESISTANCE: 165Kg
- (W/O DISCHARGE RESISTOR) 6000 MΩ (MIN) AT 100 VDC
- 20°C AND 50% RH

RECOMMENDED RECEIVING INSPECTION HIPOT:

- LINE TO GROUND: 2250 VDC FOR 1 MINUTE
- LINE TO LINE: 1450 VDC FOR 1 MINUTE

FILTER APPROVAL:

THE BEST WAY TO SELECT AND QUALIFY A FILTER IS FOR YOUR ENGINEERING TO TEST THE UNIT IN YOUR EQUIPMENT.

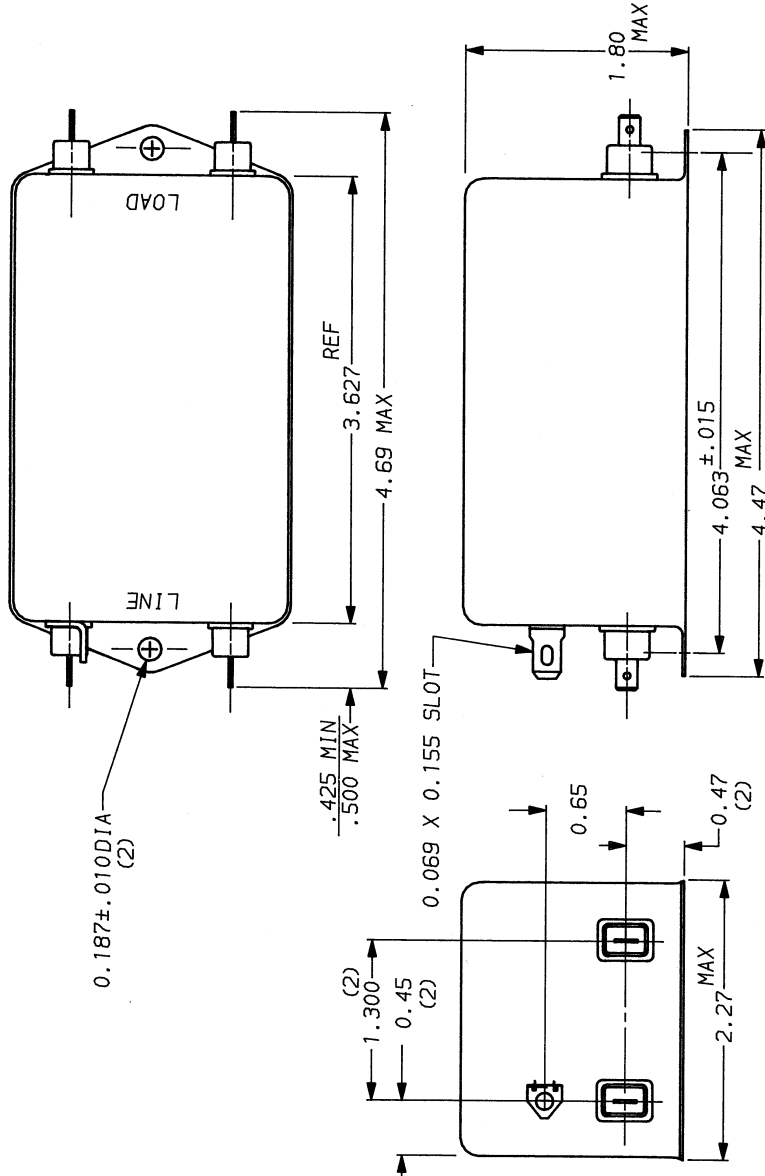
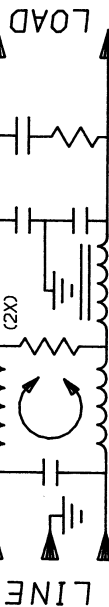
TOLERANCE EXCEPT AS NOTED

DECIMAL: .XXX .XX .X ANGLES ± 1°
ENGLISH: .025
METRIC: ±

MATERIAL: AS SUPPLIED

FINISH:

This document is proprietary to CORCOM INC. and is not to be reproduced nor used for manufacturing purposes except on CORCOM's order or prior written consent.



50Ω - 50g (MINIMUM) INSERTION LOSS	
FREQUENCY MHz	1 2 5 8 10 20 30
COMMON	12 18 26 36 47 42 42 40 45 42 42 45
DIFF. dB	7 8 17 52 70 70 70 65 65 55 50 60

corcom
LIBERTYVILLE, IL 60048

POWER LINE FILTER

SCALE: NTS 5-12-88
REV. 10ET1.02

ORIG. BY: TDL
REV. BY: CW