

C. Westoby 10-15-91  
 APPROVED BY/DATE

5  
 REV

**SAFETY ORGANIZATION(S):**

THIS FILTER HAS BEEN FORMALLY RECOGNIZED, CERTIFIED OR APPROVED BY THE LISTED AGENCY. THEREFORE, ALL TEST/REQUIREMENTS SPECIFIED IN THE LATEST REVISION OF THE FOLLOWING AGENCY STANDARDS HAVE BEEN MET:

- UL 1283
- CSA 22.2, NO. 0.0.4, 8
- VDE 565-3

**OPERATING SPECIFICATIONS:**

- LINE VOLTAGE/CURRENT: 6 AMP., 120/250 VAC
- LINE FREQUENCY: 5 AMP/40°C, 250VAC
- MAX. LEAKAGE CURRENT, EACH: 50-60Hz
- LINE TO GROUND: 1-25mA @ 120V 60Hz
- OPERATING AMBIENT TEMP. RANGE: 2.10mA @ 250V 50Hz
- IN AN AMBIENT,  $T_0$ , HIGHER THAN 40°C, THE MAXIMUM OPERATING CURRENT,  $I_0$ , IS AS FOLLOWS:  $I_0 = I_r \sqrt{\frac{85-T_0}{45}}$

**RELIABILITY SPECIFICATIONS:**

- STORAGE TEMPERATURE: -25°C TO +85°C
- HUMIDITY: 21 DAYS @ 40°C 95% RH
- CURRENT OVERLOAD TEST: 6 TIMES RATED CURRENT FOR 8 SECONDS

**TEST SPECIFICATIONS:**

- INDUCTANCE: 4.47mH NOMINAL
- CAPACITANCE: (MEASURED @ 1 KHz, 0.25 VAC MAX., 25°C ±1°C) .015µF ±20%
- LINE TO GROUND: .95µF ±20%
- DISCHARGE RESISTOR: 330KΩ
- LINE/GROUND AND LINE/LINE INSULATION RESISTANCE: 6000 MΩ (MIN) AT 100 VDC
- (W/O DISCHARGE RESISTOR) 20°C AND 50% RH

**RECOMMENDED RECEIVING INSPECTION HIPOUT:**

- LINES TO GROUND: 2250 VDC FOR 1 MINUTE
- LINE TO LINE: 1450 VDC FOR 1 MINUTE

**FILTER APPROVAL:**

THE BEST WAY TO SELECT AND QUALIFY A FILTER IS FOR YOUR ENGINEERING TO TEST THE UNIT IN YOUR EQUIPMENT.

**TOLERANCE EXCEPT AS NOTED**

DECIMAL: .XXX .XX .X ANGLES  
 ENGLISH: ±.025  
 METRIC: ±

**MATERIAL: AS SUPPLIED**

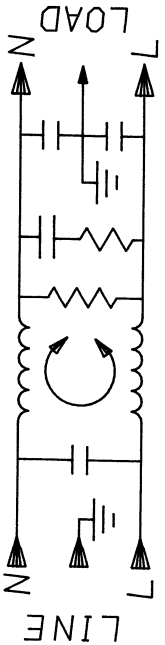
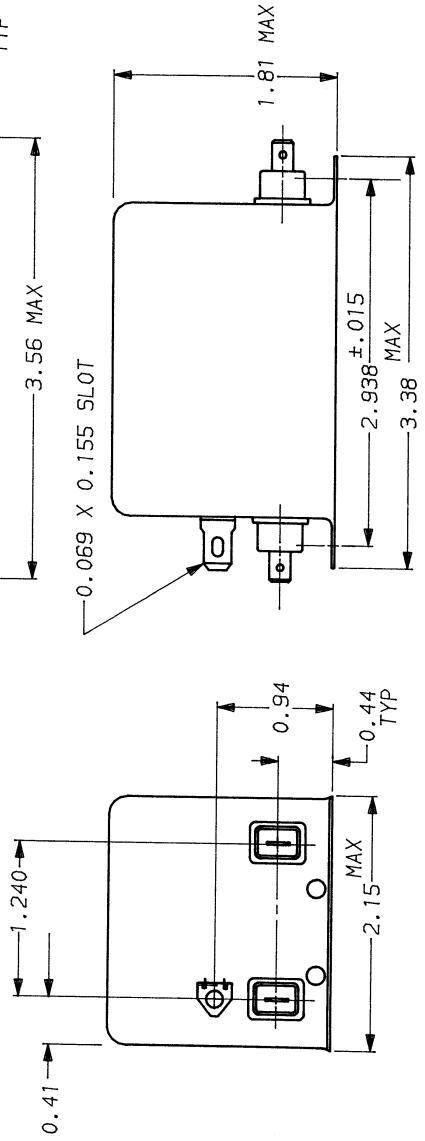
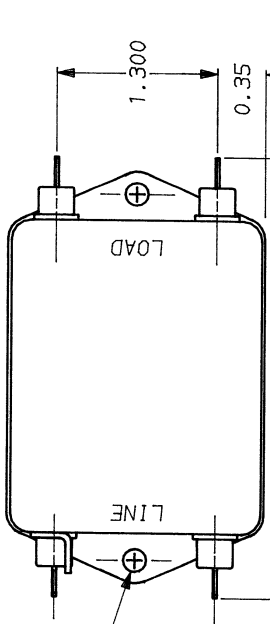
**FINISH:**

This document is proprietary to CORCOM INC. and is not to be reproduced nor used for manufacturing purposes except on CORCOM's order or prior written consent.



POWER LINE FILTER

SCALE: NTS 5-12-88  
 DRG. NO. 6VN1.05  
 REV. 05  
 DRG. BY: TDL  
 ORIGINATOR: CW



50Ω - 50α (MINIMUM) INSERTION LOSS													
FREQUENCY MHz	.01	.03	.04	.05	.1	.15	.5	1	5	10	15	20	30
COMMON	6	15	17	20	28	34	38	44	53	53	40	43	43
DIFF. dB	6	5	5	20	41	52	72	72	60	60	60	60	60