

C. Weidman 5-21-82
APPROVED BY/DATE

3
REV

SAFETY ORGANIZATION(S):

THIS FILTER HAS BEEN FORMALLY RECOGNIZED, CERTIFIED OR APPROVED BY THE LISTED AGENCY. THEREFORE, ALL TEST/REQUIREMENTS SPECIFIED IN THE LATEST REVISION OF THE FOLLOWING AGENCY STANDARDS HAVE BEEN MET:

UL 1283
CSA 22.2, NO. 0.0.4.8
VDE APPROVED
VDE 565-3

OPERATING SPECIFICATIONS:

LINE VOLTAGE/CURRENT:
3 AMP., 120 VAC
2 AMP./40°C, 250 VAC
50-60HZ
LINE FREQUENCY:
MAX. LEAKAGE CURRENT, EACH
LINE TO GROUND
LINE TO LINE
OPERATING AMBIENT TEMP. RANGE:
-10°C TO +40°C @ RATED CURRENT, I_r

IN AN AMBIENT, T_a, HIGHER THAN 40°C, THE MAXIMUM OPERATING CURRENT, I_o, IS AS FOLLOWS:

$$I_o = I_r \sqrt{\frac{85 - T_a}{45}}$$

RELIABILITY SPECIFICATIONS:

STORAGE TEMPERATURE:
-25°C TO +85°C
HUMIDITY:
21 DAYS @ 40°C 95% RH
CURRENT OVERLOAD TEST:
6 TIMES RATED CURRENT FOR 8 SECONDS

TEST SPECIFICATIONS:

INDUCTANCE:
CAPACITANCE: (MEASURED @ 1 KHz, 0.25 VAC MAX., 25°C ±1°C)
LINE TO GROUND:
LINE TO LINE:
DISCHARGE RESISTOR:
LINE/GROUND AND LINE/LINE
INSULATION RESISTANCE
(W/O DISCHARGE RESISTOR)
13.77mH NOMINAL
0.004µF ±20%
.74µF ±20%
330KΩ
6000 MΩ (MIN) AT 100 VDC
20°C AND 50% RH

RECOMMENDED RECEIVING INSPECTION HIPOUT:

LINES TO GROUND: 2250 VDC FOR 1 MINUTE
LINE TO LINE: 1450 VDC FOR 1 MINUTE

FILTER APPROVAL:

THE BEST WAY TO SELECT AND QUALIFY A FILTER IS FOR YOUR ENGINEERING TO TEST THE UNIT IN YOUR EQUIPMENT.

TOLERANCE EXCEPT AS NOTED

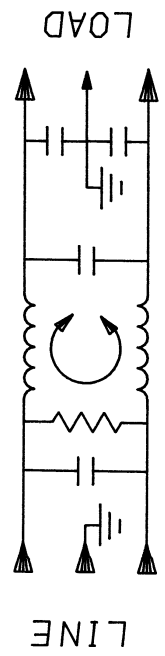
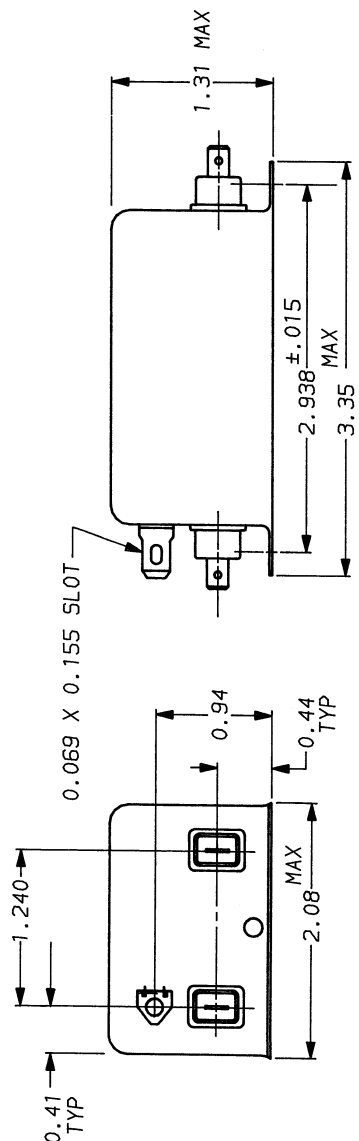
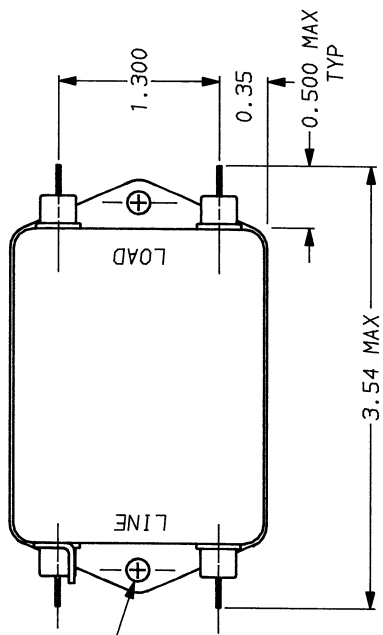
DECIMAL: .XXX .XX .X ANGLES
ENGLISH: ±.025 ±.1
METRIC: ±

MATERIAL: AS SUPPLIED

50Ω - 50Ω (MINIMUM) INSERTION LOSS

FREQUENCY KHZ	.01	.02	.03	.05	.07	.15	.5	1	5	10	30
COMMON	15	21	24	29	32	39	45	43	40	40	40
DIFF.	-	5	13	28	37	57	75	70	60	60	60

This document is proprietary to CORCOM INC. and is not to be reproduced nor used for manufacturing purposes except on CORCOM's order or prior written consent.



corcom
LIBERTYVILLE, IL 60048

POWER LINE FILTER

SCALE: DATE: 5-12-88
DRG. NO.: 3E21.03
REV.:
BY: TDL
ORIGINATOR: C/W