

C. Westby 5-21-92
 APPROVED BY/DATE
 REV 5

SAFETY ORGANIZATION(S).

THIS FILTER HAS BEEN FORMALLY RECOGNIZED, CERTIFIED OR APPROVED BY THE LISTED AGENCY. THEREFORE, ALL TEST/REQUIREMENTS SPECIFIED IN THE LATEST REVISION OF THE FOLLOWING AGENCY STANDARDS HAVE BEEN MET:

- UL 1283
- CSA 22.2, NO. 0.0.4.8
- VDE 565-3

OPERATING SPECIFICATIONS:

- LINE VOLTAGE/CURRENT: 2 AMP., 120/250 VAC
- LINE FREQUENCY: 2 AMP./40°C, 250 VAC
- MAX. CASE RISE @ RATED CURRENT: 50-60Hz
- MAX. LEAKAGE CURRENT, EACH LINE TO GROUND: 30°C
- OPERATING AMBIENT TEMP. RANGE: .5 mA at 120V 60 Hz
- IN AN AMBIENT, T_a , HIGHER THAN 40°C, THE MAXIMUM OPERATING CURRENT, I_o , IS AS FOLLOWS: 1.0 mA at 250V 50 Hz

$$I_o = I_r \sqrt{\frac{85-T_a}{45}}$$

RELIABILITY SPECIFICATIONS:

- STORAGE TEMPERATURE: -40°C TO +85°C
- HUMIDITY: 21 DAYS @ 40°C 95% RH
- CURRENT OVERLOAD TEST: 6 TIMES RATED CURRENT FOR 8 SECONDS

TEST SPECIFICATIONS:

- INDUCTANCE: .539 mH NOMINAL
- CAPACITANCE: (MEASURED @ 1 KHz, 0.25 VAC MAX., 25°C ±1°C) .011µF ±20%
- LINE TO GROUND: .203µF ±20%
- DISCHARGE RESISTOR: 1.5MΩ
- LINE/GROUND AND LINE/LINE INSULATION RESISTANCE: 6000 MΩ (MIN) AT 100 VDC

RECOMMENDED RECEIVING INSPECTION HIPOT:

- LINE TO GROUND: 2250 VDC FOR 1 MINUTE
- LINE TO LINE: 1450 VDC FOR 1 MINUTE

FILTER APPROVAL:

THE BEST WAY TO SELECT AND QUALIFY A FILTER IS FOR YOUR ENGINEERING TO TEST THE UNIT IN YOUR EQUIPMENT.

TOLERANCE EXCEPT AS NOTED

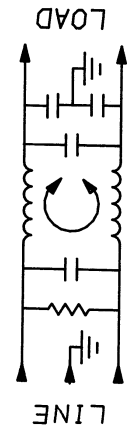
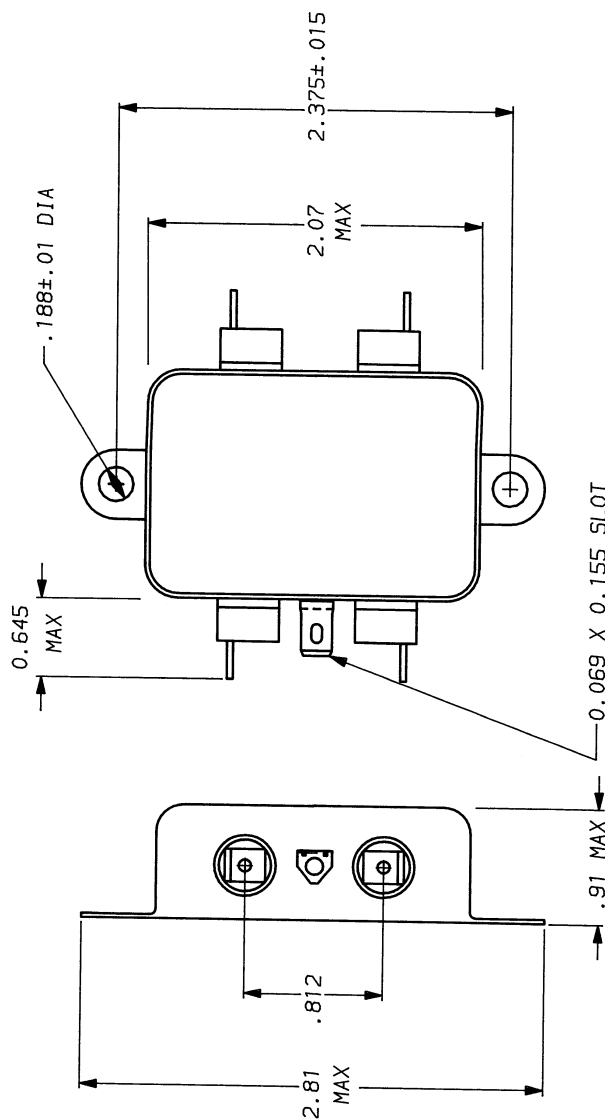
- DECIMAL: .XXX .XX .X ANGLES ± 1°
- ENGLISH: ± .025
- METRIC: ±

MATERIAL:

AS SUPPLIED

FINISH:

AS SUPPLIED



50n - 50a (MINIMUM)		INSERTION LOSS					
FREQUENCY MHz	15	5	10	20	30		
COMMON	11	25	33	40	53	55	
DIFF. dB	6	6	40	58	60	47	50

This document is proprietary to CORCOM INC. and is not to be reproduced nor used for manufacturing purposes except on CORCOM's order or prior written consent.



POWER LINE FILTER

SCALE: NTS 7-31-90
 DATE: 7-31-90
 DRN. BY: CFW
 ORIGINATOR: CFW
 DRG. NO.: 2VK1.05
 REV. 05