

C. Westoby 5-21-82  
APPROVED BY/DATE

6  
REV

**SAFETY ORGANIZATION(S):**

THIS FILTER HAS BEEN FORMALLY RECOGNIZED, CERTIFIED OR APPROVED BY THE LISTED AGENCY. THEREFORE, ALL TEST/REQUIREMENTS SPECIFIED IN THE LATEST REVISION OF THE FOLLOWING AGENCY STANDARDS HAVE BEEN MET:

- UL 1283
- CSA 22-2, NO. 0, 0.4, 8
- VDE 565-3
- SEV 1055/TP1977/5.1.1

**OPERATING SPECIFICATIONS:**

LINE VOLTAGE/CURRENT:  
6 AMP., 120/250 VAC  
5 AMP./40°C, 250 VAC  
50-60Hz  
40°C

**LINE FREQUENCY:**

MAX. CASE RISE  $\theta$  RATED CURRENT:  
MAX. LEAKAGE CURRENT, EACH  
LINE TO GROUND  
.25mA at 120V 60 Hz  
.48 mA at 250V 50 Hz  
-10°C TO +40°C  $\theta$  RATED CURRENT,  $I_r$

**OPERATING AMBIENT TEMP. RANGE:**

IN AN AMBIENT,  $T_a$ , HIGHER THAN 40°C, THE MAXIMUM OPERATING CURRENT,  $I_o$ , IS AS FOLLOWS:

$$I_o = I_r \sqrt{\frac{85-T_a}{45}}$$

**RELIABILITY SPECIFICATIONS:**

STORAGE TEMPERATURE:  
-40°C TO +85°C  
HUMIDITY:  
21 DAYS @ 40°C 95% RH  
CURRENT OVERLOAD TEST:  
6 TIMES RATED CURRENT FOR 8 SECONDS

**TEST SPECIFICATIONS:**

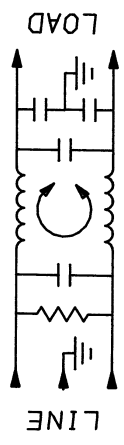
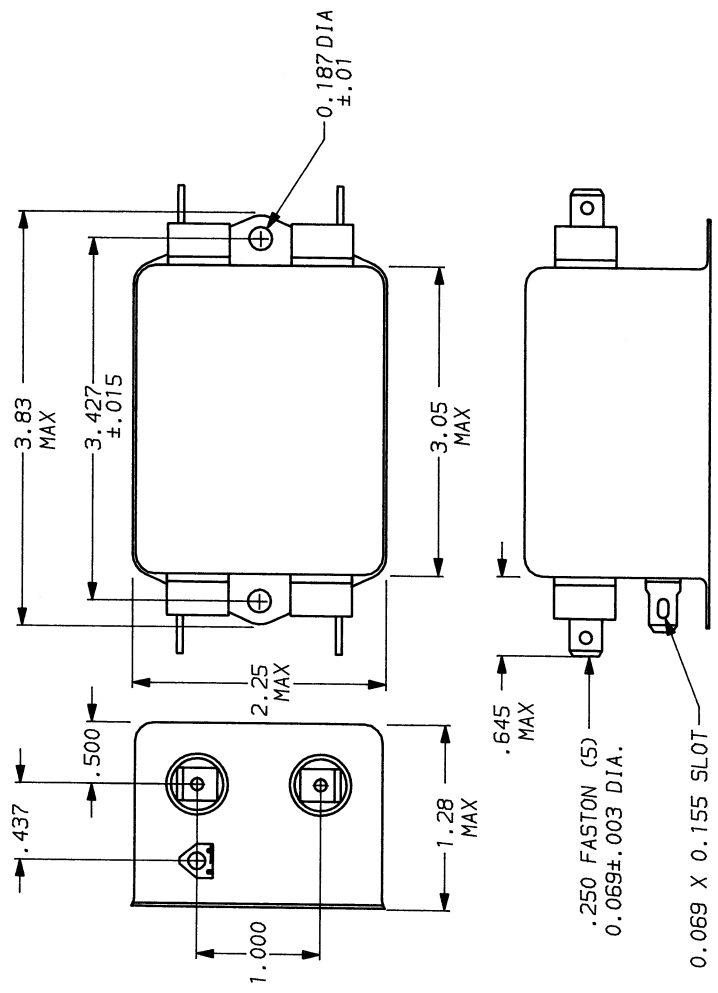
INDUCTANCE:  
CAPACITANCE: (MEASURED @ 1 KHz, 0.25 VAC MAX., 25°C  $\pm$ 1°C)  
LINE TO GROUND:  
LINE TO LINE:  
DISCHARGE RESISTOR  
330 K $\Omega$   
LINE/GROUND AND LINE/LINE  
INSULATION RESISTANCE  
6000 M $\Omega$  (MIN) AT 100 VDC  
20°C AND 50% RH

**RECOMMENDED RECEIVING INSPECTION HIPOT:**

LINES TO GROUND:  
LINE TO LINE:  
2250 VDC FOR 1 MINUTE  
1450 VDC FOR 1 MINUTE

**FILTER APPROVAL:**

THE BEST WAY TO SELECT AND QUALIFY A FILTER IS FOR YOUR ENGINEERING TO TEST THE UNIT IN YOUR EQUIPMENT.



50 $\Omega$ - 50 $\mu$ (MINIMUM) INSERTION LOSS											
FREQUENCY MHZ	.01	.02	.05	.08	.15	.5	1	5	10	20	30
COMMON dB	7	13	21	25	32	44	45	45	45	38	27
DIFF. dB	1	1	2	3	25	59	65	65	65	50	50

This document is proprietary to CORCOM INC. and is not to be reproduced nor used for manufacturing purposes except on CORCOM's order or prior written consent.



LIBERTYVILLE, IL 60048

POWER LINE FILTER

SCALE: NTS 9-12-89  
DATE: 9-12-89  
REV. NO. 6VSK1 06  
DRG. NO. 6VSK1 06  
TDL  
CHK

FINISH: AS SUPPLIED

AS SUPPLIED

TOLERANCE EXCEPT AS NOTED  
DECIMAL: .XXX .XX .X ANGLES  
ENGLISH:  $\pm$ .025  
METRIC:  $\pm$