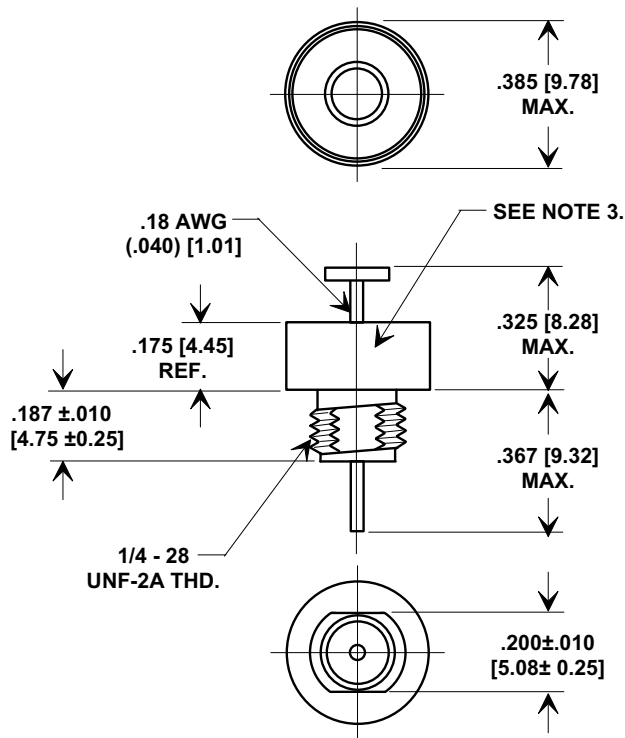
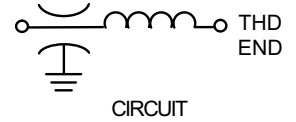
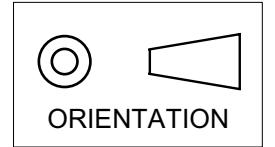


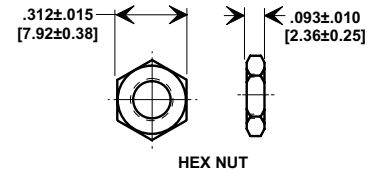
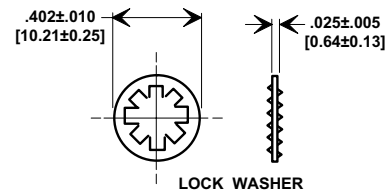
Electrical Testing
per Tusonix standard
test plans and Mil-Std-202
Test Methods.

MARKETING SALES DRAWING
DIMENSIONS IN INCHES - DO NOT SCALE THIS DRAWING
DIMENSIONS IN METRIC - []



NOTES:

1. TUSONIX STANDARD PART NUMBER: 4600-050.
TUSONIX RoHS COMPLIANT PART NUMBER: 4600-050 LF.
CUSTOMER MUST SPECIFY STANDARD OR RoHS PART NUMBER WHEN ORDERING.
2. MATERIALS:
BUSHING - TIN PLATED STEEL.
LEAD STANDARD PART; SOLDER PLATED COPPER.
RoHS PART; SILVER PLATED COPPER.
NUT - TIN PLATED BRASS.
L"WASHER - TIN PLATED PHOSPHOR BRONZE.
3. PART MARKING: TRADEMARK AND VARIATION NUMBER.
STANDARD PART: BLACK INK. RoHS PART: GREEN INK.
4. MOUNTING TORQUE: 8 lb - ins. max.
5. DCR - .01 max.
6. MAX. SOLDER TEMPERATURE 500°F.



| MIN. CAP (UF) | DWV (VDC) | I.R. MIN. @ 100 (VDC.) | WORKING VOLTAGE D.C. | | CURRENT DC (AMPS). | MIN. NO LOAD INSERTION LOSS (dB) @ 25°C PER MIL-STD-220 | | | | | | TEMP. CHARAC. |
|---|--------------|------------------------------|-------------------------|----------|--------------------------|--|--|---------|---|--------|-------|------------------|
| | | | 85°C | 125°C | | 30 KHz | 100 KHz | 300 KHz | 1 MHz | 10 MHz | 1 GHz | |
| 1.4 | 300 | 10 G | 100 | 70 | 15 | 15 | 25 | 34 | 44 | 60 | 70 | X7W |
| REVISION RECORD Original Release C.O. 6769 METRIC DIMS & NOTES ADDED: E.C. 7-17-92 6789 WVDC REVISED 100 & 70 WERE 80 & 50. L.E. 10-26-92 6992 RDN TO COMP FMT. S.M. 02-14-02 20020213-4-03 WORKING VOLTAGE REV'D 100, 70 WERE 80, 50 & TEMP. CHARAC. ADDED 20020903-1-02 ADDED NOTE S 1 & 3. REVISED NOTE 2. S.M. 06-24-05 20050608-2-02 | 0 | 1 | 2 | 3 | 4 | 5 | --TOLERANCES-- Unless Otherwise Specified | | Title COAXIAL BROADBAND - "C" | | | |
| | | | | | | | DECIMAL ± | | Drawn S.M. 02-14-02 | | | |
| | | | | | | | ANGLES ± | | Approved T.C. 02-14-02 | | | |
| | | | | | | | TUSONIX TUCSON, ARIZONA | | Scale 2 X | | | |
| | | | | | | | A | | 4600-050 | | | |

X-2015 Rev-0