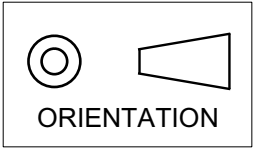
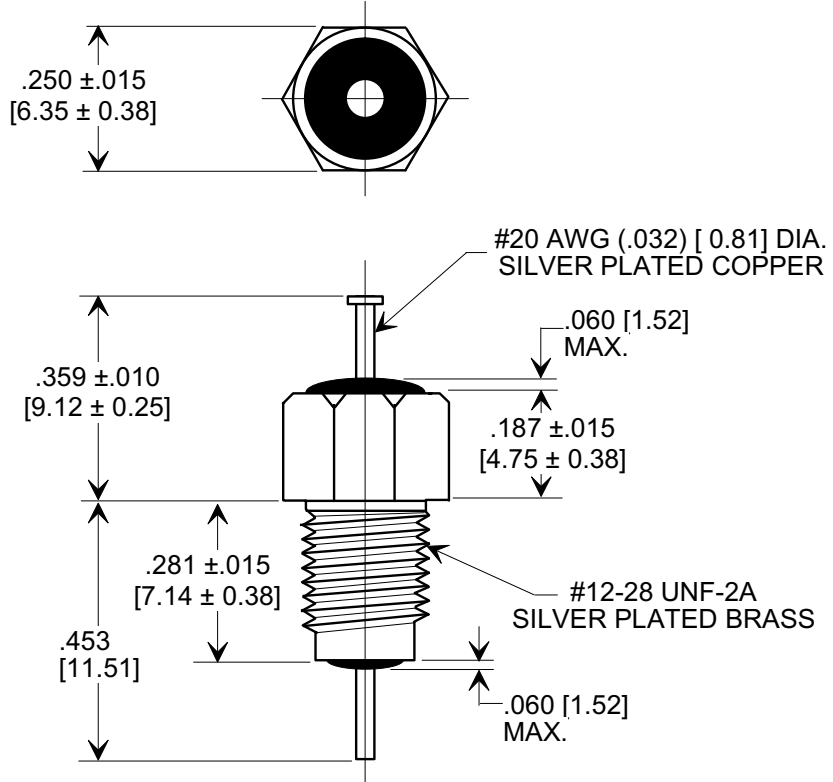
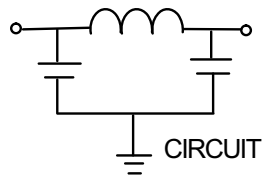


This drawing is the property of Tusonix, Inc., and may not be used, reproduced, published or disclosed to others without expressed authorization by Tusonix Inc.

**MARKETING SALES DRAWING**  
 DIMENSIONS IN INCHES - DO NOT SCALE THIS DRAWING  
 DIMENSIONS IN METRIC - [ ]



**Electrical Testing**  
 per Tusonix standard  
 test plans and Mil-Std-202  
 Test Methods.



- NOTE:  
 1. HEX NUT AND LOCK WASHER SUPPLIED.  
 2. MIL PART NO. TO BE STAMPED ON HEX FLATS, 2 CHARACTERS PER FLAT (MI/57/33/43/00/01)

1500	200	200	10	---	---	45	45
	85°C	125 °C		50 MHz	100 MHz	1 GHz	10 GHz
MIN. CAP. (pF)	WORKING VOLTAGE (WVdc)		CURRENT IAC (A) (O-400 Hz)	MINIMUM NO LOAD INSERTION LOSS (dB) AT 25°C PER MIL-STD -220			

X-2015 Rev-0  
**REVISION RECORD**  
 Original Release  
 C.O. ECO-653  
**A**

TOLERANCES unless otherwise specified		Title	
2 PLC. DECIMAL ±	N/A	<b>M15733/43-0001</b> <b>BUSHING STYLE</b> <b>EMI FILTER</b>	
3 PLC. DECIMAL ±	.031		
ANGLES ±	N/A	Drawn L.E. 04-09-09	Scale 3X
<b>TUSONIX</b> TUCSON, ARIZONA		Approved R.L. 04-09-09	
		<b>A</b>	<b>4204-501</b>