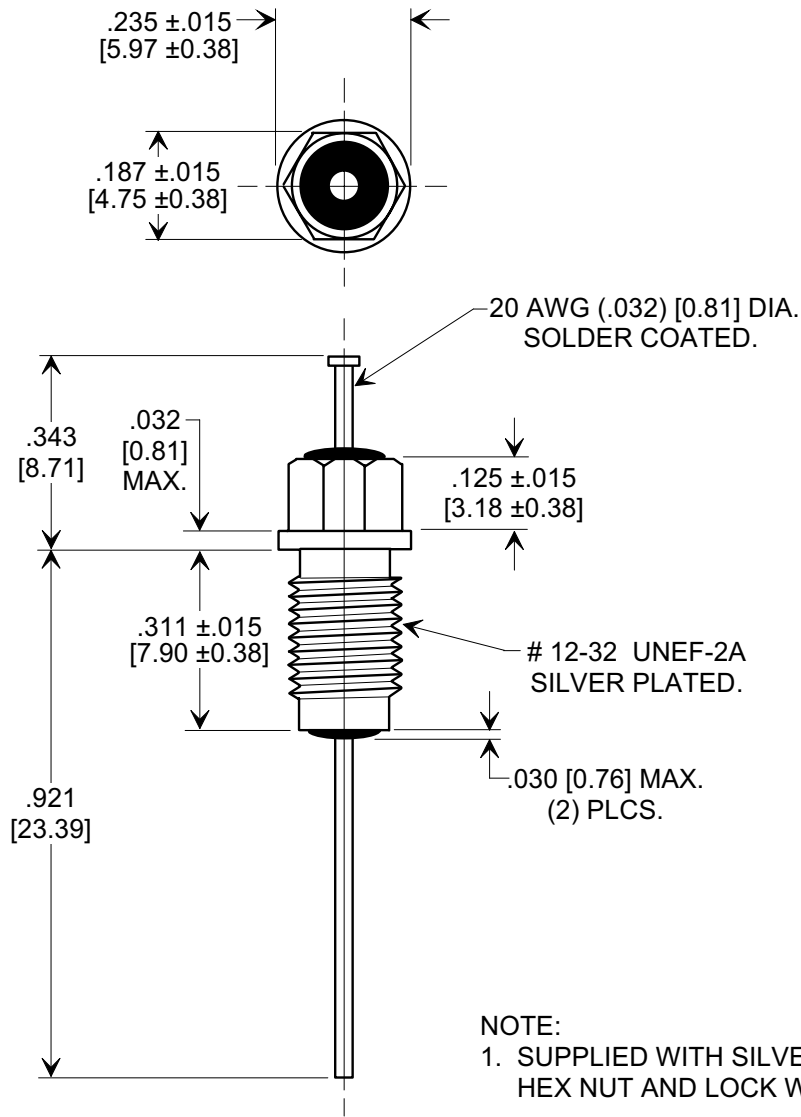
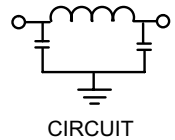
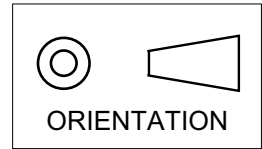


Electrical Testing  
per Tusonix standard  
test plans and Mil-Std-202  
Test Methods.

**MARKETING SALES DRAWING**  
**DIMENSIONS IN INCHES - DO NOT SCALE THIS DRAWING**  
**DIMENSIONS IN METRIC - [ ]**



5000	200	100	10 A	50	65	70	70
	85°C	125 °C		50 MHz	100 MHz	1 GHz	10 GHz
MIN. CAP. (pF)	WORKING VOLTAGE (VVdc)		CURRENT IDC	MINIMUM NO LOAD INSERTION LOSS (dB) AT 25°C PER MIL-STD -220			

X-2015 Rev-0 <b>REVISION RECORD</b> Original Release C.O. 20050921-2-01 0	TOLERANCES unless otherwise specified 2 PLC. DECIMAL ± // // // 3 PLC. DECIMAL ± .031 [0.79]		Title <b>M15733/61-0011 BUSHING STYLE EMI FILTER</b>	
	ANGLES ± // // //		Drawn S.M. 09-21-05	Scale X 3
	<b>TUSONIX</b> TUCSON, ARIZONA		Approved B.Mc. 09-21-05	
	<b>A</b>		<b>4203-551</b>	