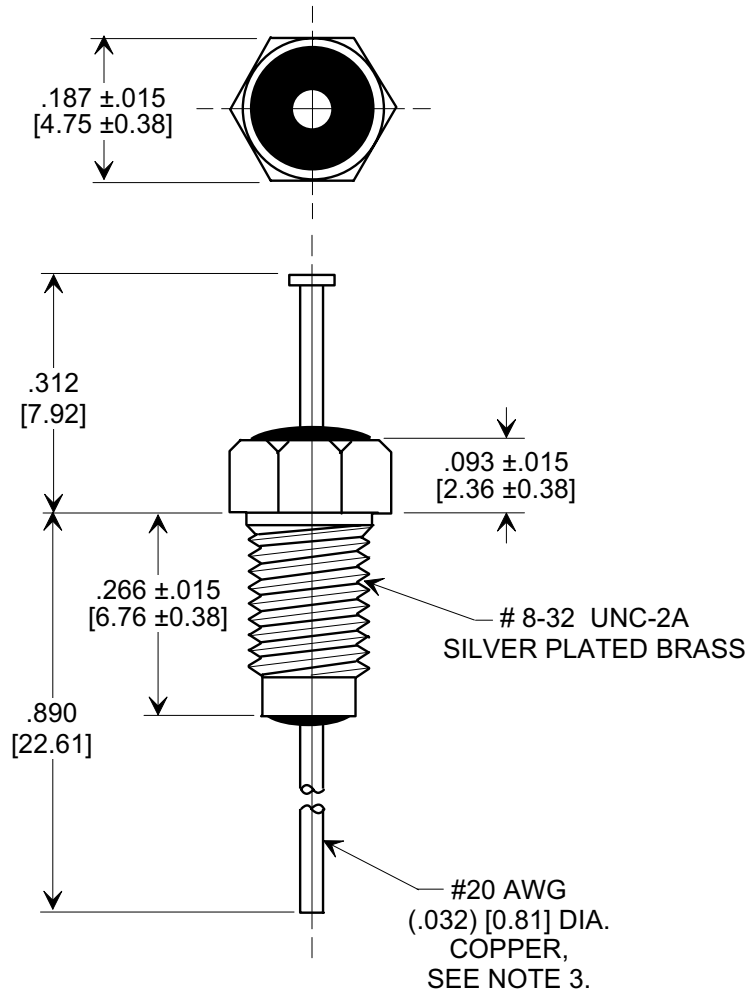
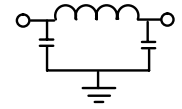
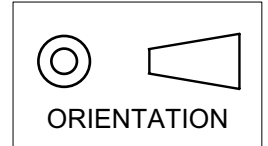


**MARKETING SALES DRAWING**

**DIMENSIONS IN INCHES - DO NOT SCALE THIS DRAWING**  
**DIMENSIONS IN METRIC - [ ]**

Electrical Testing  
 per Tusonix standard  
 test plans and Mil-Std-202  
 Test Methods.



**NOTES:**

1. SUPPLIED WITH SILVER PLATED HEX NUT AND LOCKWASHER.
2. TUSONIX STANDARD PART NUMBER: 4201-051.  
 TUSONIX RoHS COMPLIANT PART NUMBER: 4201-051 LF.  
 CUSTOMER MUST SPECIFY STANDARD OR RoHS PART NUMBER WHEN ORDERING.
3. LEAD FINISH: STANDARD PART #: 60/40 SOLDER PLATED. RoHS PART #: SILVER PLATED.
4. PART MARKING: TRADEMARK AND VARIATION NUMBER ON HEX FLATS.  
 STANDARD PART: BLACK INK. RoHS PART: GREEN INK.

MIN. CAP. (pF)	WORKING VOLTAGE (WVdc)		CURRENT (Idc)	I.R. MIN. @ 100 (VDC.)	DWV (VDC)	MINIMUM NO LOAD INSERTION LOSS (dB) AT 25°C PER MIL-STD -220			
	85°C	125°C				10 MHz	100 MHz	1 GHz	10 GHz
5500	200	100	10 A	10 G	400	14	55	70	70

X-2015 Rev-0	<b>REVISION RECORD</b>			<b>--TOLERANCES--</b> Unless Otherwise Specified	Title	
	Original Release C.O. <b>1653</b>	<b>0</b>			<b>BUSHING STYLE EMI FILTER</b>	
	CURRENT UNIT "A" ADDED. L.E. 08-20-85	<b>1</b>				
	RDN TO COMP FMT & ADDED METRIC. S.M. 03-05-99	<b>2</b>				
ADDED NOTES, IR & DWV. S.M. 07-28-05	<b>19990305-3-01</b>	<b>2</b>		DECIMAL ± .031 [0.79]	Drawn S.M. 03-08-98	Scale 4 X
ADDED NOTES, IR & DWV. S.M. 07-28-05	<b>20050726-2-26</b>	<b>3</b>		ANGLES ±	Approved H.R. 03-08-98	
				<b>TUSONIX</b> TUCSON, ARIZONA	<b>A</b>	<b>4201-051</b>