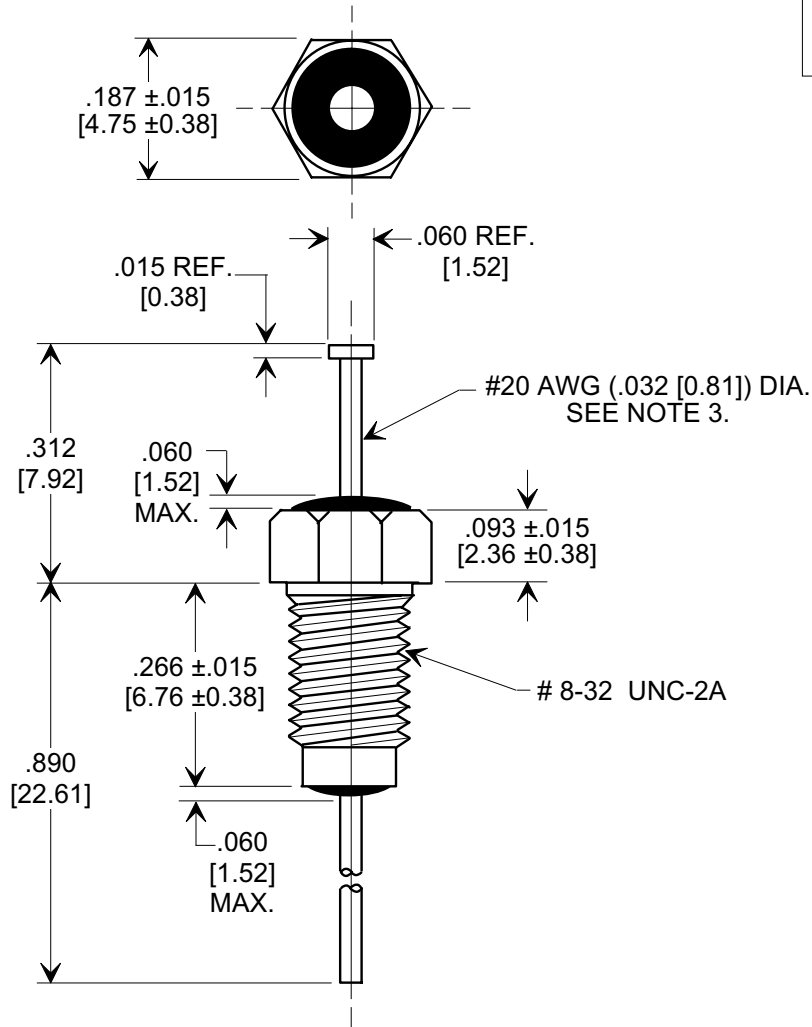
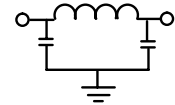
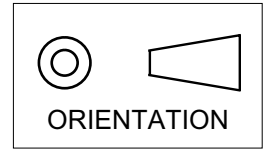


**MARKETING SALES DRAWING**  
**DIMENSIONS IN INCHES - DO NOT SCALE THIS DRAWING**  
**DIMENSIONS IN METRIC - [ ]**

Electrical Testing  
per Tusonix standard  
test plans and Mil-Std-202  
Test Methods.



**NOTES:**

- SUPPLIED WITH SILVER PLATED HEX NUT AND LOCKWASHER.
- TUSONIX STANDARD PART NUMBER: 4201-001.  
TUSONIX RoHS COMPLIANT PART NUMBER: 4201-001 LF.  
CUSTOMER MUST SPECIFY STANDARD OR RoHS PART NUMBER WHEN ORDERING.
- LEAD FINISH: STANDARD PART #: 60/40 SOLDER PLATED. RoHS PART #: SILVER PLATED.
- PART MARKING: TRADEMARK AND VARIATION NUMBER ON HEX FLATS.  
STANDARD PART: BLACK INK. RoHS PART: GREEN INK.

CAP. (pF)	WORKING VOLTAGE (WVdc)		CURRENT (Idc)	I.R. MIN. @ 100 VDC	D.W.V.	MINIMUM NO LOAD INSERTION LOSS (dB) AT 25°C PER MIL-STD -220			
	85°C	125 °C				10 MHz	100 MHz	1 GHz	10 GHz
1500	200	100	10 A	10 G	400 VDC	5	45	65	70

X-2015 Rev-0	<b>REVISION RECORD</b>			<b>--TOLERANCES--</b> Unless Otherwise Specified	Title		
	0	Original Release			<b>BUSHING STYLE EMI FILTER</b>		
		RDN TO COMP FMT & ADDED METRIC. S.M. 01-21-02			DECIMAL ± .031 [0.79]	Drawn S.M. 01-21-02	Scale 4 X
	6	DIM'S REV'D .015 REF. WAS .031 ± .010 & .060 REF. WAS .100 ± .015 & MIN. @ 100 VDC ADDED L.E. 04-16-03	7		ANGLES ±	Approved T.C. 01-21-02	
	20020121-1-01		20030414-3-01				
	NOTES 2-4 ADDED. S.M. 04-27-05			<b>TUSONIX</b> TUCSON, ARIZONA			
		20050420-3-02		<b>A</b>			
				<b>4201-001</b>			